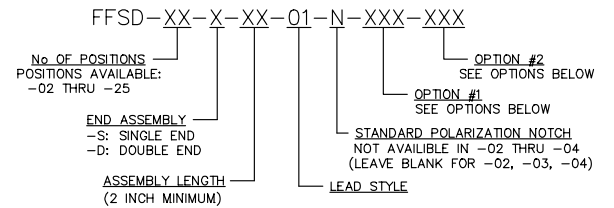
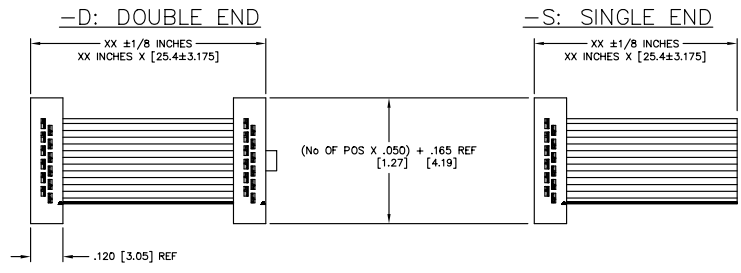
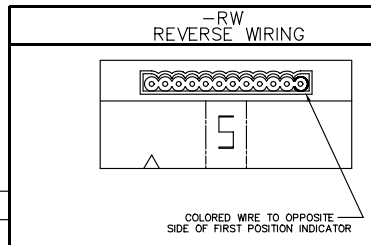
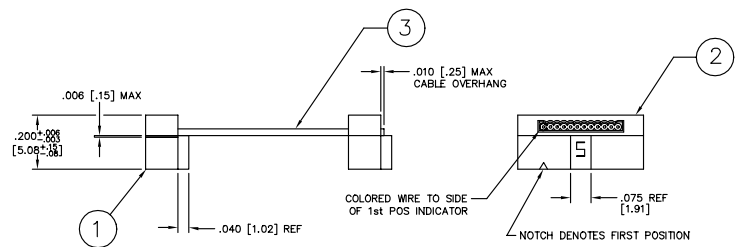


DIMENSIONS ARE IN INCHES		UNLESS OTHERWISE NOTED	TOLERANCES ARE:	TITLE:	DWG NO:
ONE PLACE DECIMALS ± .1	THREE PLACE DECIMALS ± .005		ANGLES ± 5°	.050 X .050 C.L. FEMALE IDC ASSEMBLY	FFSD-XX-X-XX-01-N-XXX-XXX
TWO PLACE DECIMALS ± .01	FOUR PLACE DECIMALS ± .0020				SHEET 1 OF 1

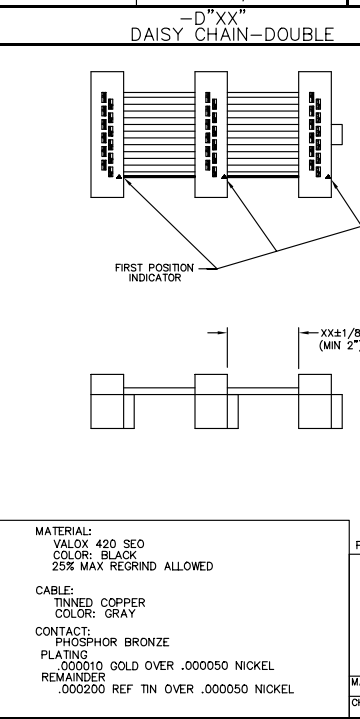
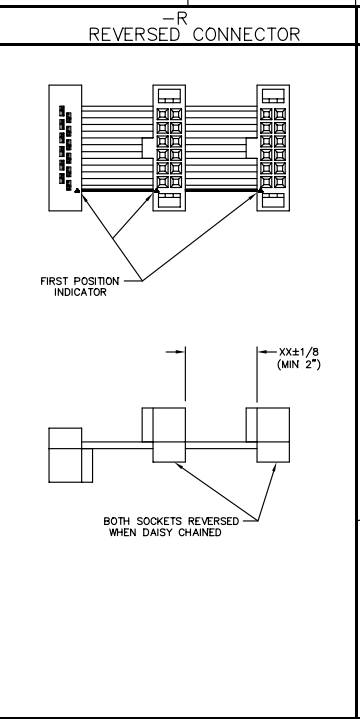
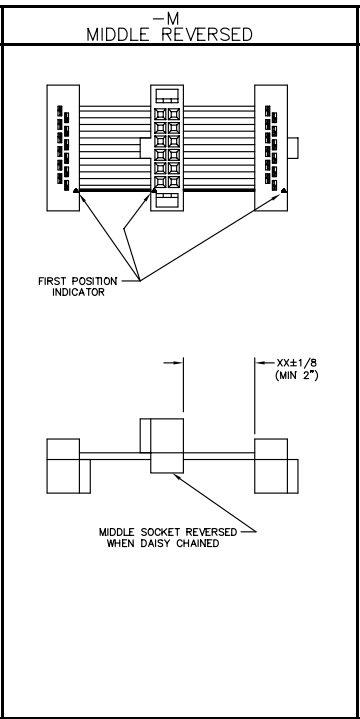
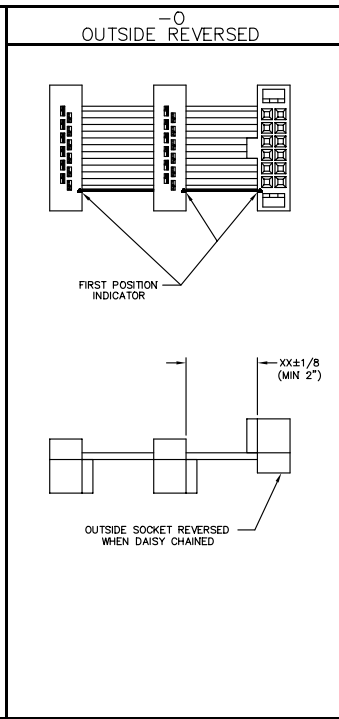


NOTE: PLATING IS .000010 GOLD ON CONTACT AREA WITH TIN PLATING IN THE IDC SLOT.



Do not scale from this print.

ITEM-1	ITEM-2	ITEM-3
FFS-XX-D	FFC-XX-D	CB-XX-30-7/38-025-GR



PROPRIETARY NOTE
THIS DOCUMENT CONTAINS INFORMATION CONFIDENTIAL AND PROPRIETARY TO SAMTEC INC. AND SHALL NOT BE REPRODUCED OR TRANSMITTED TO OTHER DOCUMENTS OR DISCLOSED TO OTHERS OR USED FOR ANY PURPOSE OTHER THAN THAT FOR WHICH IT WAS OBTAINED WITHOUT THE EXPRESSED WRITTEN CONSENT OF SAMTEC INC.

MATERIAL:
VALOX 420 SE0
COLOR: BLACK
25% MAX REGRIND ALLOWED
CABLE:
TINNED COPPER
COLOR: GRAY
CONTACT:
PHOSPHOR BRONZE
PLATING
.000010 GOLD OVER .000050 NICKEL
REMAINDER
.000200 REF TIN OVER .000050 NICKEL

PLOT SCALE: 1=3 / DIMSCALE: .2

samtec

520 PARK EAST BLVD. NEW ALBANY, INDIANA 47150
PHONE (812) 944-6733 P.O. BOX 1147
CODE 55322

MADE BY: GREG REIDINGER 2-22-93
CHECKED BY:

ENG APPROVAL

FFSD-XX-X-XX-01-N-XXX-XXX

SHEET 1 OF 1