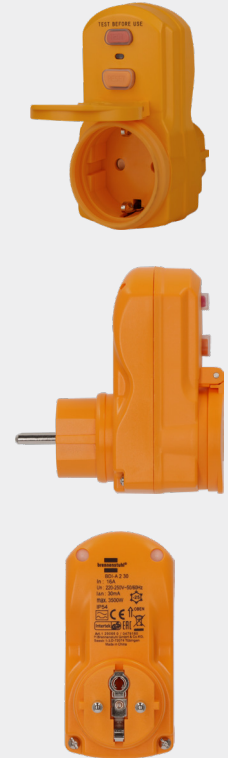


Circuit Breaker Plug-in Adapter BDI-A 2 30 IP54

For use outdoors, IP 54.

The ideal safety circuit breaker for connection to frequently used electrical appliances.



Product number 1290660
EAN 4007123641130

DESCRIPTION

- Provides effective protection against electric shocks. Instantly disconnects the live lead from the mains as soon as residual current is present.
- 2-pole cut-out.

TECHNICAL DATA

Plug system plug	Type E and F (Protective contact with earth hole)	Max. current carrying capacity	16 A
-------------------------	---	---------------------------------------	------

PACKAGING, DIMENSIONS AND WEIGHTS

Packaging	In display packaging	Dimension LxWxH (without packing)	10.5 cm x 5 cm x 9.5 cm
UP	1	Weight of product (including packaging)	0.23 kg
Weight of product (without packaging)	0.18 kg	Dimension LxWxH (incl. packing)	10.3 cm x 5.8 cm x 18 cm