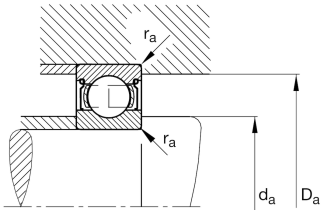
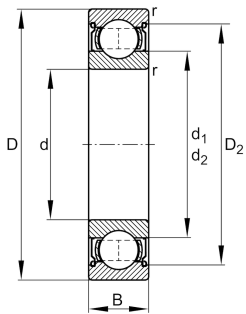


**FAG****6009-2Z-L069-C3**

Deep groove ball bearing

Deep groove ball bearing 60...-2Z, single row, shields, steel sheet metal cage

## Technical information



## Your current product variant

Sealing	2Z	Non-contact shield on both sides
Cage	JN	Steel sheet metal
Tolerance class	PN	Normal (PN)
Dimensional / heat stabilization	SN	Rings dimensional stabilized up to 120°
Lubricant	L069	Low noise high-temperature grease, interchangeable with grease L207
Radial internal clearance	C3 (Group 3)	Internal clearance larger than CN
Bore type	Z	Cylindrical

## Main Dimensions &amp; Performance Data

d	45 mm	Bore diameter
D	75 mm	Outside diameter
B	16 mm	Width
C <sub>r</sub>	21,200 N	Basic dynamic load rating, radial
C <sub>0r</sub>	14,400 N	Basic static load rating, radial
C <sub>ur</sub>	750 N	Fatigue load limit, radial
n <sub>G</sub>	11,200 1/min	Limiting speed
n <sub>gr</sub>	9,700 1/min	Reference speed
m	0.24 kg	Weight



Mounting dimensions

$d_{a\ min}$	49.6 mm	Minimum diameter shaft shoulder
$D_{a\ max}$	70.4 mm	Maximum diameter of housing shoulder
$r_{a\ max}$	1 mm	Maximum fillet radius

Dimensions

$r_{\ min}$	1 mm	Minimum chamfer dimension
$D_1$	65.6 mm	Shoulder diameter outer ring
$D_2$	67.98 mm	Caliber diameter outer ring
$d_1$	54.2 mm	Shoulder diameter inner ring


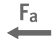




Temperature range

$T_{\ min}$	-30 °C	Operating temperature min.
$T_{\ max}$	120 °C	Operating temperature max.

Calculation factors

$f_0$	15.3	Calculation factor
-------	------	--------------------

Characteristics

	Radial load
	Axial load in one direction
	Axial load in two directions
	Lifetime lubrication, freedom from maintenance
	Grease Lubrication
	Sealed on both sides