

Experimental Kit



Product Code: A20300

The Meech Experimental Kit incorporates a Meech Vortex Tube with a Cold End Silencer and a length of flexible knuckle trunking which can be used to direct the cold air flow. The Experimental Kit also includes all 8 generators, that allows for the most flexible temperature and air consumption, perfect for application that require changing cold air temperature.

Features

No moving parts
Available in 2 sizes
Runs only on compressed air
Stainless steel construction

Benefits

Low maintenance
Suitable for a range of applications
No electricity costs
Hard wearing

Technical Characteristics

Compact and lightweight	Overall length - Medium 272mm Overall length - Small 239mm
Versatile temperature control	Supplied with all 8 generators
Directional cold air flow	Knuckle trunking provided
Reduced noise operation	Silencer provided

Product shown in this document may be covered by one or more patents, patents applied for and/or registered designs and/or trade marks. For further information please refer to our Head Office or visit www.meech.com.

Meech International

UK: +44 1993 706 700
Hungary: +36 27 535 075

US: +1 330 564 2000
China: +86 400 820 0102

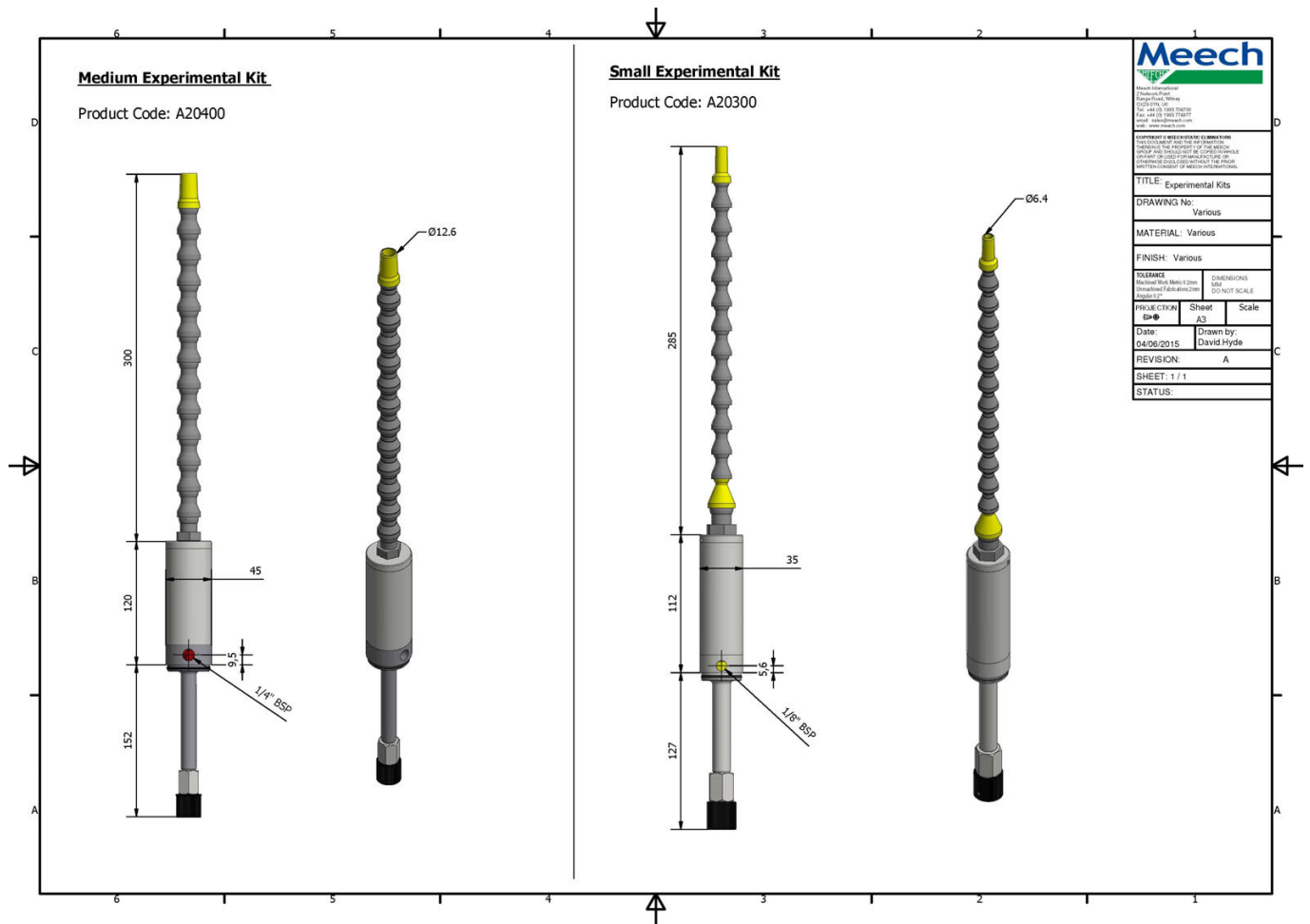
Belgium: +32 8067 0204
India: +91 20-26159641

email: sales@meech.com
web: www.meech.com



Product Data Sheet

Published Date: 18.06.2015



Product shown in this document may be covered by one or more patents, patents applied for and/or registered designs and/or trade marks. For further information please refer to our Head Office or visit www.meech.com.

Meech International

UK: +44 1993 706 700
Hungary: +36 27 535 075

US: +1 330 564 2000
China: +86 400 820 0102

Belgium: +32 8067 0204
India: +91 20-26159641

email: sales@meech.com
web: www.meech.com

