



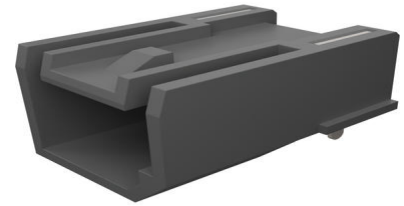
Part Number : [1040260725](#)

Product Description : 0.80mm Pitch HSAutoLink Right-Angle Header, Through Hole, 5 Circuit, USB Mini-B, Type B, Gray

Series Number : 104026

Status : Active

Product Category : PCB Headers and Receptacles



Documents & Resources

Drawings

[1040260725_sd.pdf](#)

3D Models and Design Files

[STEP AP242](#)

[SOLIDWORKS](#)

[Creo](#)

[Symbol and Footprint \(Multi-Format\)](#)

Specifications

[PK-49616-001-001.pdf](#)

[PS-49616-001-001.pdf](#)

Product Environment Compliance

Compliance

| | |
|--------------------|---|
| GADSL/IMDS | Duty-To-Declare |
| China RoHS | Not Relevant |
| EU ELV | Compliant per 2000/53/EC |
| Low-Halogen Status | Low-Halogen per IEC 61249-2-21 |
| REACH SVHC | Not Contained per D(2025)4165-DC (25 June 2025) |
| EU RoHS | Compliant per EU 2015/863 |

[Compliance Statements](#)

- EU RoHS
- REACH SVHC

- Low-Halogen

Industry Documents

- IPC 1752A Class C
- IPC 1752A Class D
- Molex Product Compliance Declaration
- IEC-62474
- chemSHERPA (xml)

Substances of Interest

- PFAS

EU RoHS Certificate of Compliance

Additional Product Compliance Information

Part Details

General

| | |
|----------------|---|
| Status | Active |
| Category | PCB Headers and Receptacles |
| Series | 104026 |
| Description | 0.80mm Pitch HSAutoLink Right-Angle Header, Through Hole, 5 Circuit, USB Mini-B, Type B, Gray |
| Application | Automotive, Signal, Wire-to-Board |
| Comments | Higher current rating achievable, please contact PM for additional technical information. |
| Component Type | PCB Header |
| Product Name | HSAutoLink |
| UPC | 883906385736 |

Electrical

| | |
|-------------------------------|----------|
| Current - Maximum per Contact | 1.0A |
| Voltage - Maximum | 5V (RMS) |

Physical

| | |
|--------------------|-------|
| Breakaway | No |
| Circuits (Loaded) | 5 |
| Circuits (maximum) | 5 |
| Color - Resin | Black |

| | |
|--------------------------------|--------------------------------|
| Durability (mating cycles max) | 25 |
| First Mate / Last Break | No |
| Glow-Wire Capable | No |
| Guide to Mating Part | No |
| Keying to Mating Part | None |
| Lock to Mating Part | Yes |
| Material - Metal | Copper Alloy |
| Material - Plating Mating | Gold |
| Material - Plating Termination | Tin |
| Material - Resin | High Temperature Thermoplastic |
| Net Weight | 3713.790/mg |
| Number of Rows | 1 |
| Orientation | Right Angle |
| Packaging Type | Tray |
| PCB Locator | Yes |
| PCB Retention | Yes |
| PCB Thickness - Recommended | 1.60mm, 2.30mm |
| Pitch - Mating Interface | 0.80mm |
| Pitch - Termination Interface | 0.80mm |
| Plating min - Mating | 0.762µm |
| Plating min - Termination | 3.810µm |
| Polarized to Mating Part | Yes |
| Polarized to PCB | Yes |
| Shrouded | No |
| Stackable | No |
| Temperature Range - Operating | -40° to +85°C |
| Termination Interface Style | Through Hole |

Mates With / Use With

Mates with Part(s)

| Description | Part Number |
|-----------------------------|---------------|
| HSAutoLink Cable Assemblies | <u>111005</u> |
| HSAutoLink Cable Assemblies | <u>111014</u> |
| | |

| | |
|-----------------------------|---------------|
| HSAutoLink Cable Assemblies | <u>111015</u> |
| HSAutoLink Cable Assemblies | <u>111019</u> |
| HSAutoLink Cable Assemblies | <u>111041</u> |

This document was generated on Nov 06, 2025