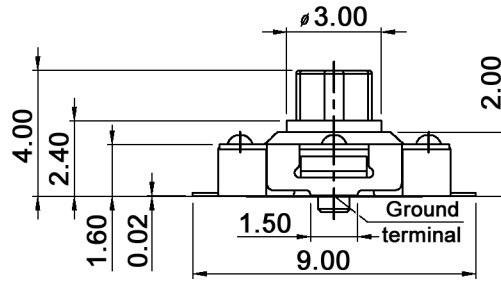
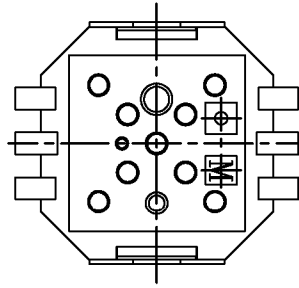
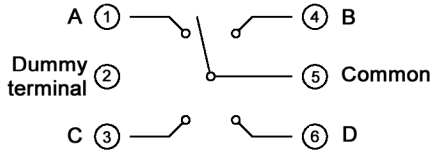
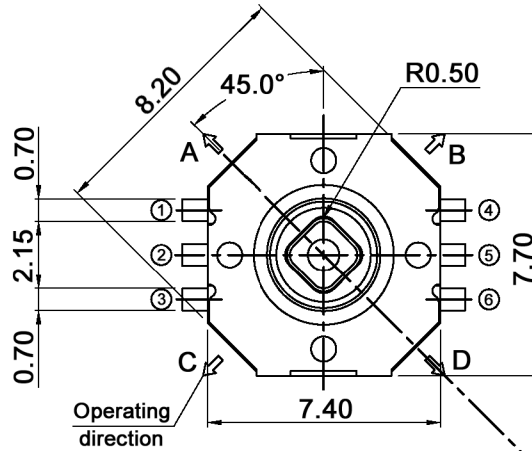
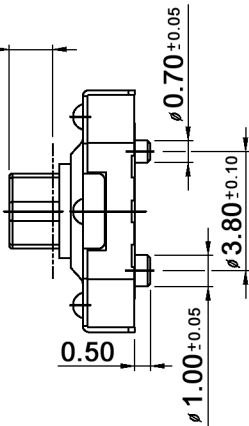


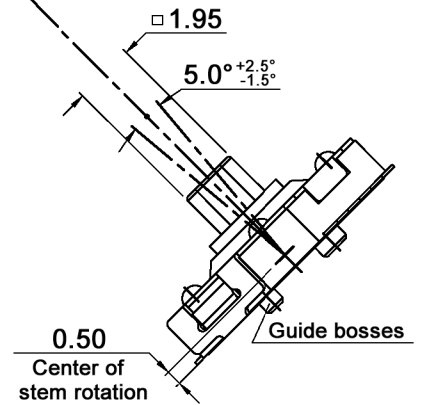
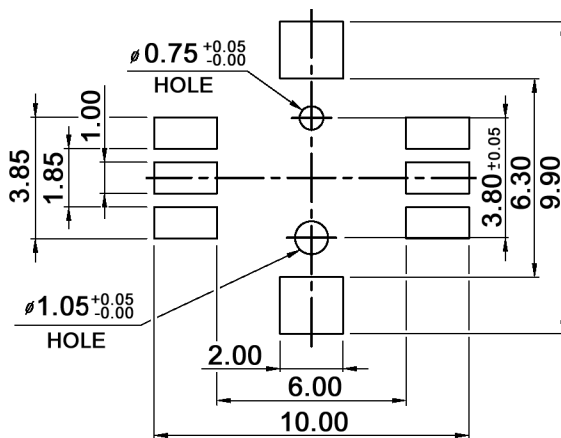
DIAGRAM CIRCUIT



1.40 max.  
Fitting margin  
for key top



P.C.B. LAYOUT



Compliance: RohS II (2011/65/EU)

Tolerances: max. ±0.20mm	Date	Name
	09/05	dr
Operating temperature	07/15	dr
Soldering conditions	11/13	dr
Modifications	Date	Name

TSSJ 4

30 06 98

Page

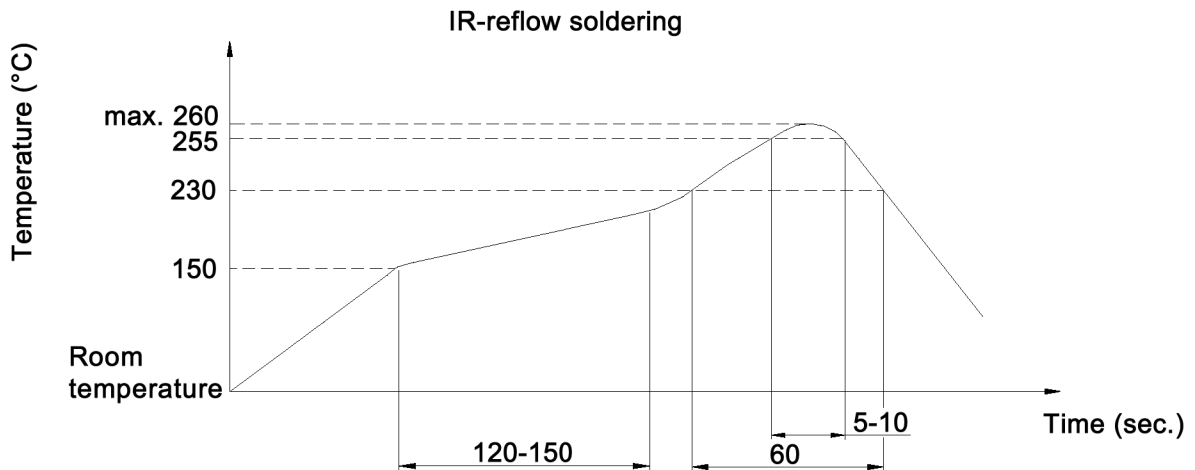
1/2

knitter-switch

**Specifications:**

Contact rating: 50mA, 12V DC  
 Contact resistance: 100mOhm max.  
 Insulation resistance: 100MOhm min.  
 Dielectric strength: 250V AC (50 or 60 Hz) for 1 minute  
 Operating temperature: -40°C to +85°C  
 Storage temperature: -40°C to +85°C  
 Operating force: 4 directions: 160 +/-50g  
 Mechanical life: 100 000 cycles min.  
 Material: Cover: C7701RH  
 Stem: high-temp. thermoplastic LCP  
 Contact: SUS301CSP-EH  
 Terminal: C5210R-H, with silver plated  
 Base: high-temp. thermoplastic LCP, black

**Soldering conditions:**



Compliance: RohS II (2011/65/EU)

Tolerances: max. ±0.20mm	Date	Name	<h1>TSSJ 4</h1>
	09/05	dr	
			<h2>30 06 98</h2>
			Page
			2/2
Modifications	Date	Name	