

Description

STAINLESS STEEL BOLT HOLE CASTOR, GREY RUBBER 125MM

Fixed

Part Number

Swivel

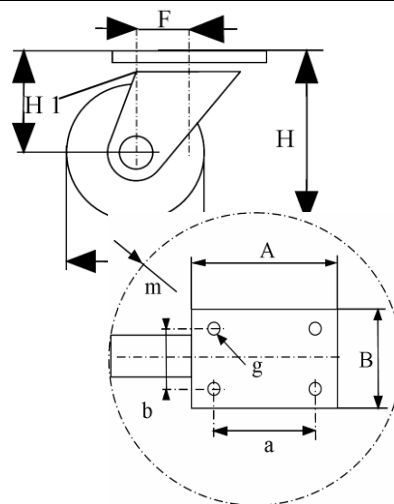
KP410A125-325RX

Swivel and brake

KP410D125-325RX



	Fixed	Swivel	Swivel+brake
Wheel Diameter ØD	125 mm		
Overall Height H	155 mm ±1		
Center hole	13 mm		
Offset F ±1	\	39 mm	39 mm
Width of Tread	32 mm±0,5		
Hardness of tread	shore A ± 88		
Load capacity	100 Kg		
Weight		0,8 kg	0,95 kg
Temperature	- 10 / + 50 °C		



Castor Assembly :

Pressed stainless steel -AISI 304-. Swivel on two rows of balls.
Central bolt hole fitting
Total lock. Metal pedal.

Wheel :

Wheel centre made of Grey Polypropylene.
Tread : Thermoplastic rubber, grey non marking.
Hub : Stainless Steel Roller bearing.

Features :

Low starting effort,
Bonded Rubber,
Corrosion resistant, easy to clean
Suited for Food industry, Hospital or Industrial Kitchen equipment.
Medium duty.