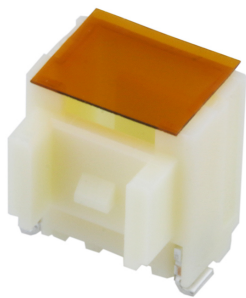




**Part Number :** [5019400307](#)  
**Product Description :** 1.00mm Pitch, Pico-Clasp PCB Header, Single Row, Vertical, Surface Mount, 1.01µm Tin Plated, Outer Positive Lock, 3 Circuits, Natural  
**Series Number :** 501940  
**Status :** Active  
**Product Category :** PCB Headers and Receptacles



## Documents & Resources


**Drawings**  
[5019400307\\_sd.pdf](#)

**3D Models and Design Files**  
[5019400307.dxf](#)  
[5019400307.pdf](#)  
[5019400307\\_stp.zip](#)

**Specifications**  
[5013300000-AS-000.pdf](#)  
[SPK-501940-001-001.pdf](#)  
[5019401001-PS-001.pdf](#)  
[5019401001-PS-CHI-001.pdf](#)  
[5019401001-PS-JAP-001.pdf](#)  
[5019401001-PS-KOR-001.pdf](#)  
[5019401001-PS-SPA-001.pdf](#)  
[PS-501940-001-001.pdf](#)

## Product Environment Compliance

### Compliance

|                    |   |
|--------------------|---|
| GADSL/IMDS         | Compliant with Exemption 44; 33   |
| China RoHS         |  |
| EU ELV             | Not Relevant  |
| Low-Halogen Status | Not Low-Halogen per IEC 61249-2-21  |
| REACH SVHC         | Not Contained per D(2024)7663-DC (21 Jan 2025)  |
| EU RoHS            | Compliant per EU 2015/863   |

## Multiple Part Product Compliance Statements

- Eu RoHS
- REACH SVHC
- Low-Halogen

## Multiple Part Industry Compliance Documents

- IPC 1752A Class C
- IPC 1752A Class D
- Molex Product Compliance Declaration
- IEC-62474
- chemSHERPA (xml)

## EU RoHS Certificate of Compliance

---

### Part Details

#### General

|                |   |
|----------------|---|
| Status         | Active  |
| Category       | PCB Headers and Receptacles   |
| Series         | 501940  |
| Description    | 1.00mm Pitch, Pico-Clasp PCB Header, Single Row, Vertical, Surface Mount, 1.01µm Tin Plated, Outer Positive Lock, 3 Circuits, Natural |
| Application    | Signal, Wire-to-Board   |
| Component Type | PCB Header  |
| Product Name   | Pico-Clasp  |
| UPC            | 822350287050  |

#### Agency

|    |        |
|----|--------|
| UL | E29179 |
|----|--------|

#### Electrical

|                               |                  |
|-------------------------------|------------------|
| Current - Maximum per Contact | 1.5A             |
| Voltage - Maximum             | 100V AC (RMS)/DC |

#### Physical

|                   |    |
|-------------------|----|
| Breakaway         | No |
| Circuits (Loaded) | 3  |

|                                |                       |
|--------------------------------|-----------------------|
| Circuits (maximum)             | 3                     |
| Color - Resin                  | Natural               |
| Durability (mating cycles max) | 30                    |
| First Mate / Last Break        | No                    |
| Glow-Wire Capable              | No                    |
| Guide to Mating Part           | No                    |
| Keying to Mating Part          | None                  |
| Lock to Mating Part            | Yes                   |
| Material - Metal               | Phosphor Bronze       |
| Material - Plating Mating      | Tin                   |
| Material - Plating Termination | Tin                   |
| Material - Resin               | Nylon                 |
| Net Weight                     | 104.600/mg            |
| Number of Rows                 | 1                     |
| Orientation                    | Vertical              |
| Packaging Type                 | Embossed Tape on Reel |
| PCB Locator                    | No                    |
| PCB Retention                  | Yes                   |
| Pitch - Mating Interface       | 1.00mm                |
| Plating min - Mating           | 1.016µm               |
| Plating min - Termination      | 1.016µm               |
| Polarized to Mating Part       | Yes                   |
| Polarized to PCB               | No                    |
| Shrouded                       | Fully                 |
| Stackable                      | No                    |
| Temperature Range - Operating  | -40° to +105°C        |
| Termination Interface Style    | Surface Mount         |

---

## Mates With / Use With

### Mates with Part(s)

| Description   | Part Number   |
|---|---------------|
| 1.00mm Pitch, Pico-Clasp Low-Halogen Single Row Receptacle Housings | <u>501939</u> |

---

---

This document was generated on Apr 23, 2025