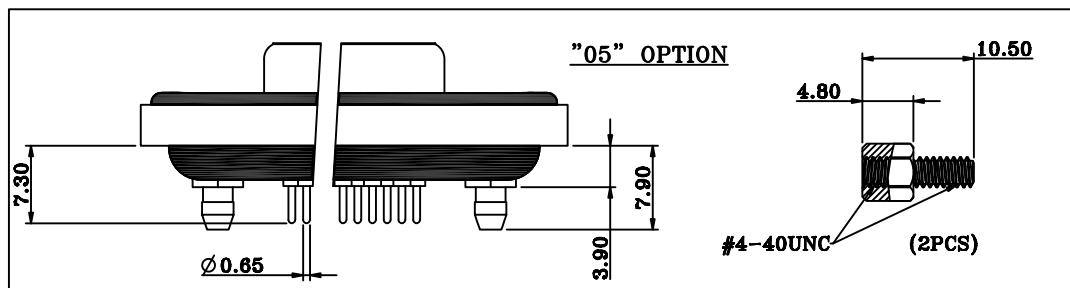
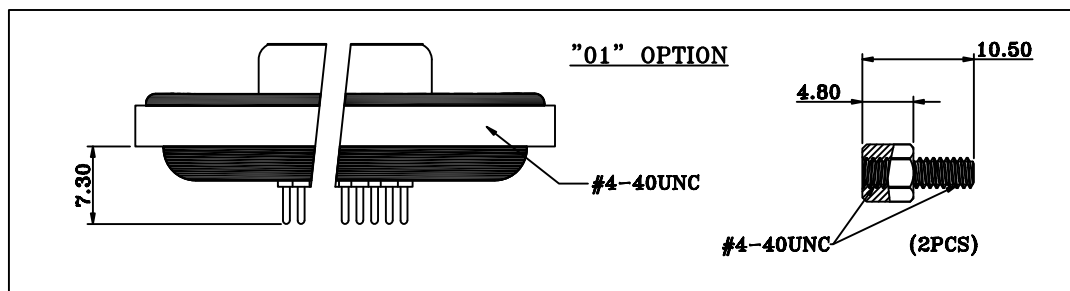


| DIMENSIONS(mm) |       |       |       |
|----------------|-------|-------|-------|
| SIZE           | A     | B     | C     |
| 9              | 39.50 | 25.00 | 16.30 |
| 15             | 48.00 | 33.30 | 24.60 |
| 25             | 61.50 | 47.05 | 38.40 |
| 37             | 77.80 | 63.50 | 54.80 |

**NOTE:**

|                  |                              |
|------------------|------------------------------|
| <b>MATERIAL</b>  |                              |
| HOUSING          | PBT UL94V-0, BLACK           |
| FLANGE           | PBT UL94V-0, BLACK           |
| CONTACT          | BRASS, PLATING P/N KEY BELOW |
| SHELL            | STEEL, NICKEL                |
| O-RING           | SILICONE                     |
| SEALING COMPOUND | EPOXY                        |
| HARDWARE         | BRASS; NICKEL PLATED         |

**HARDWARE OPTIONS**



**ELECTRICAL**

|                       |                |
|-----------------------|----------------|
| RATED CURRENT         | 5A             |
| VOLTAGE               | 1000 VAC 1 MIN |
| INSULATOR RESISTANCE  | 5 GOhms MIN.   |
| CONTACT RESISTANCE    | 10 mOhms MAX.  |
| WATER PROOF           | IP67           |
| <b>ENVIRONMENT</b>    |                |
| OPERATION TEMPERATURE | -25°C TO +85°C |

**SDF-VYY-213LYYY**

|                                |   |
|--------------------------------|---|
| <b>SERIES</b>                  | SDF = STANDARD DSUB FLANGE  |
| <b>CONTACT TYPE</b>            | V = VERTICLE PCB MOUNT  |
| <b>POSITIONS</b>               | 09<br>15<br>25<br>37  |
| <b>GENDER</b>                  | 1 = FEMALE  |
| <b>HARDWARE OPTIONS</b>        | 01 = 4-40 THREADED INSERTS/4-40 JACKSCREWS<br>05 = 4-40 THREADED BOARDLOCKS/4-40 JACKSCREWS |
| <b>CONTACT PLATING OPTIONS</b> | 1 = GOLD FLASH<br>2 = 30u" GOLD PLATING   |

**RoHS COMPLIANT**



THESE DRAWINGS AND SPECIFICATIONS ARE THE PROPERTY OF NorComp AND SHALL NOT BE REPRODUCED, COPIED OR USED AS THE BASIS FOR THE MANUFACTURE OR SALE OF APPARATUS WITHOUT WRITTEN PERMISSION.

DRAWN:  
J. KADEL  
DATE:  
03/02/2020

**TOLERANCES**  
X. ±0.40  
.X ±0.30  
.XX ±0.20  
.XXX ±0.10

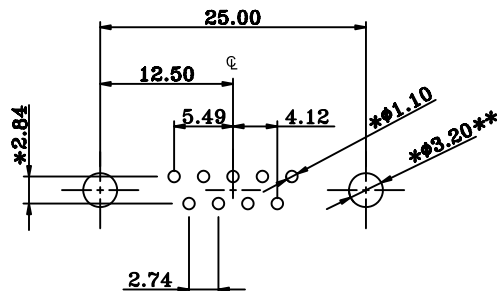
UNITS = mm DO NOT SCALE FROM DRAWING

**NorComp**

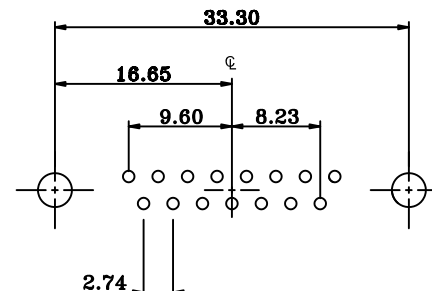
|               |            |                 |          |
|---------------|------------|-----------------|----------|
| SCALE:<br>NTS | SHEET<br>1 | OF<br>2         | REV<br>0 |
| DWG NO.       |            | SDF-VYY-213LYYY |          |

**\*\*ø3.20MM HOLES NOT NEEDED FOR "01" HARDWARE OPTION**

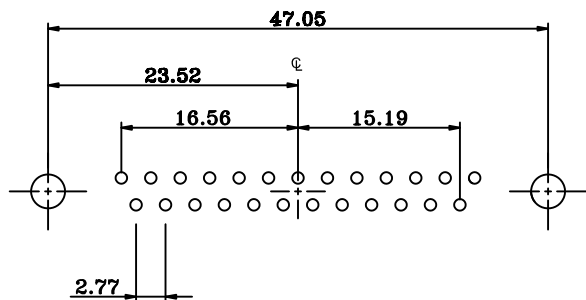
**09 POSITION**



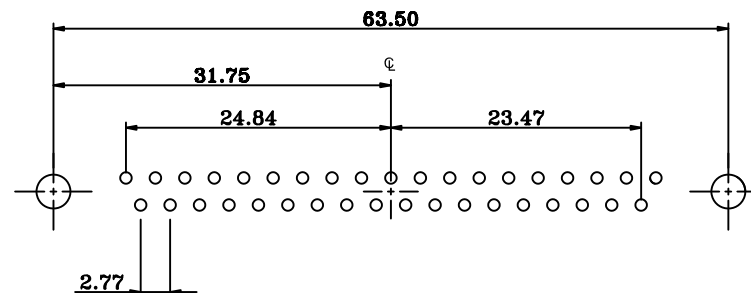
**15 POSITION**



**25 POSITION**



**37 POSITION**



**RECOMMENDED PCB LAYOUT**

**\*TYPICAL // HOLE SIZE MAY NOT BE SUITABLE FOR YOUR SPECIFIC APPLICATION**

**RoHS COMPLIANT**



THESE DRAWINGS AND SPECIFICATIONS ARE THE PROPERTY OF NorComp AND SHALL NOT BE REPRODUCED, COPIED OR USED AS THE BASIS FOR THE MANUFACTURE OR SALE OF APPARATUS WITHOUT WRITTEN PERMISSION.

DRAWN:

J. KADEL

DATE:

03/02/2020

**TOLERANCES**

**X. ±0.40**  
**.X ±0.30**  
**.XX ±0.20**  
**.XXX ±0.10**

**UNITS = mm**

**DO NOT SCALE FROM DRAWING**

**NorComp**

SCALE:

NTS

SHEET

2

OF

2

REV

0

DWG NO.

**SDF-VYY-213LYYY**