

## Features

- Made from high quality Steel C45
- Fit with British Standard Chain Sizes
- DIN 8187 - ISO/R 606
- Simplex Sprocket Type
- Pilot Bore Type Sprocket
- Excellent Tooth Strength

## RS PRO Pilot Bore Sprockets



RS PRO is the own brand of RS. The RS PRO Seal of Approval is your assurance of professional quality, a guarantee that every part is rigorously tested, inspected, and audited against demanding standards. Making RS PRO the Smart Choice for our customers.

## Product Description

*Pilot bore sprocket for use with the British standard chain sizes and is usually used for light duty applications under normal stress levels. Pilot sprockets (or rough sock bore sprockets) are designed with a hub that sits on the centre of the shaft and provides a secure and stable method of power transmission to the chain.*

*These RS PRO sprockets are constructed from high quality Steel C45 for excellent tooth strength and protection from and deformation, they are maintenance free once installed and can easily be re-bored by the operator to meet their required needs.*

*Pilot sprockets are commonly used in vehicle gear boxes, industrial machinery, drive chains, gearboxes, motor bikes and bicycles.*

## General Specifications

Material	Steel
----------	-------

## Mechanical Specifications

Bore Type	Pilot
Sprocket Type	Simplex
To Fit Standard Chain Type	British Standards; See below table for full details
Number of Teeth	See below table for full details
Outside Diameter	See below table for full details
Pitch Diameter	See below table for full details
Hub Diameter	See below table for full details
Pilot Bore Diameter	See below table for full details
Sprocket Width	See below table for full details
Pitch	See below table for full details

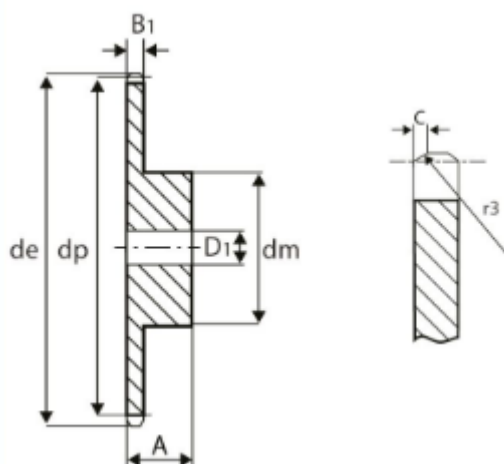
## Approvals

Standards Met	DIN 8187 - ISO/R 606
---------------	----------------------

## Product Details

### BS (06B) Pilot Bore Sprockets - 3/8"

Material	Steel C45
Bore Type	Pilot
Sprocket Type	Simplex
To Fit Standard Chain Type	06B-1
Pitch	3/8"
Tooth Radius	r3 = 10
Radius Size	C = 1.0
Tooth Width	B1 = 5.3

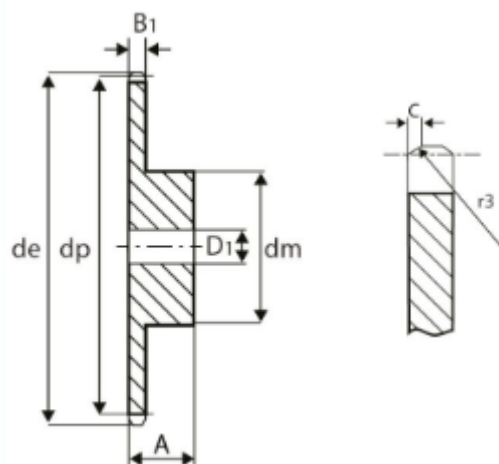


Stock No.	Number of Teeth	Outside Diameter de	Pitch Diameter dp	Hub Diameter dm	Pilot Bore Diameter D1	Sprocket Width A
1465428	8	28 mm	24.89 mm	15 mm	8 mm	22 mm
1465429	9	31 mm	27.85 mm	18 mm	8 mm	22 mm
1465430	10	34 mm	30.82 mm	20 mm	8 mm	22 mm
1465431	11	37 mm	33.8 mm	22 mm	8 mm	25 mm
1465432	12	40 mm	36.8 mm	25 mm	8 mm	25 mm
184870	13	43 mm	39.8 mm	28 mm	10 mm	25 mm
184886	15	49.3mm	45.81 mm	34 mm	10 mm	25 mm
183726	17	55.3mm	51.83 mm	40 mm	10mm	28 mm
183704	18	58.3mm	54.85 mm	43 mm	10mm	28 mm
183675	19	61.3mm	57.87 mm	45 mm	10mm	28 mm
183681	21	68mm	63.91 mm	48 mm	12mm	28 mm
183697	23	73.5mm	69.95 mm	52 mm	12mm	28 mm
184375	24	77mm	72.97 mm	54 mm	12mm	28 mm
184072	25	80mm	76 mm	57 mm	12mm	28 mm
183710	27	86mm	82.05 mm	60 mm	12mm	28 mm
184381	28	89mm	85.07 mm	60 mm	12mm	28 mm
184088	30	94.7mm	91.12 mm	60 mm	12mm	30 mm
184094	38	119.5mm	115.35 mm	70 mm	16 mm	30 mm

## Product Details

### BS (08B) Pilot Bore Sprockets - 1/2" Pitch

Material	Steel C45
Bore Type	Pilot
Sprocket Type	Simplex
To Fit Standard Chain Type	08B-1
Pitch	1/2"
Tooth Radius	r3 = 13
Radius Size	C = 1.3
Tooth Width	B1 = 7.2

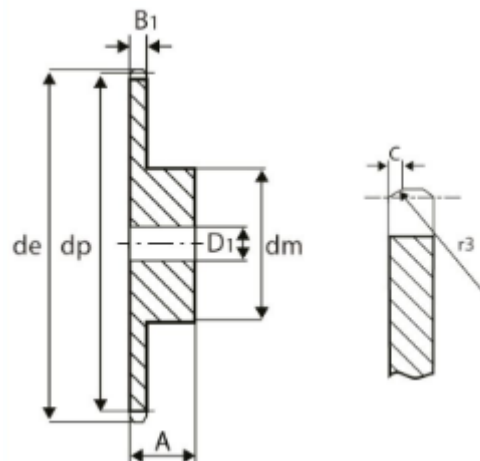


Stock No.	Number of Teeth	Outside Diameter $d_e$	Pitch Diameter $d_p$	Hub Diameter $d_m$	Pilot Bore Diameter $D_1$	Sprocket Width $A$
1465433	8	37.2 mm	33.18 mm	20	10 mm	25 mm
1465434	9	41 mm	37.13 mm	24	10 mm	25 mm
1465435	10	45.2 mm	41.1 mm	26	10 mm	25 mm
1465436	11	48.7 mm	45.07 mm	29	10 mm	25 mm
1465437	12	53 mm	49.07 mm	33	10 mm	28 mm
184101	13	57.4mm	53.06 mm	37	10 mm	28 mm
184044	14	61.8mm	57.07 mm	41	10 mm	28 mm
183423	15	65.5mm	61.09 mm	45	12 mm	28 mm
183439	16	69.5mm	65.1 mm	50	12 mm	28 mm
183451	17	73.6mm	69.11 mm	52	12 mm	28 mm
183467	18	77.8mm	73.14 mm	56	12 mm	28 mm
184741	19	81.7mm	77.16mm	60	12 mm	28 mm
184757	20	85.8mm	81.19 mm	64	12 mm	28 mm
183855	21	89.7mm	85.22 mm	68	12 mm	28 mm
183861	24	101.8mm	97.29 mm	70	14 mm	28 mm
183877	25	105.8mm	101.33 mm	70	14 mm	28 mm
183883	26	110mm	105.36 mm	70	16 mm	30 mm
183833	27	114mm	109.4 mm	70	16 mm	30 mm
183473	28	118mm	113.42 mm	70	16 mm	30 mm
183489	30	126.1mm	121.5 mm	80	16 mm	30 mm
183170	38	158.6mm	153.8 mm	90	16 mm	35 mm

## Product Details

### BS (05B) Pilot Bore Sprockets – 8x3mm

Material	Steel C45
Bore Type	Pilot
Sprocket Type	Simplex
To Fit Standard Chain Type	05B-1
Tooth Radius	$r3 = 8$
Radius Size	$C = 1.0$
Tooth Width	$B1 = 2.8$



Stock No.	Number of Teeth	Outside Diameter de	Pitch Diameter dp	Hub Diameter dm	Pilot Bore Diameter D1	Sprocket Width A
1465423	8	24 mm	20.9 mm	13 mm	6 mm	12 mm
1465424	9	26.6 mm	23.39 mm	15 mm	6 mm	12 mm
1465425	10	29.2 mm	25.89 mm	17 mm	8 mm	12 mm
1465426	11	31.7 mm	28.39 mm	18 mm	8 mm	13 mm
1465427	12	34.2 mm	30.91 mm	20 mm	8 mm	13 mm
182880	13	36.7 mm	33.42 mm	23 mm	8 mm	13 mm
183136	14	39.2 mm	35.95 mm	25 mm	8 mm	13 mm
183142	15	41.7mm	38.48 mm	28 mm	8 mm	13 mm
182896	16	44.3mm	41.01 mm	30 mm	8 mm	14 mm
184713	17	46.8mm	43.53 mm	30 mm	8 mm	14 mm
184729	25	67.5mm	63.83 mm	35 mm	8 mm	14 mm
184858	28	74.8mm	71.45 mm	40 mm	10 mm	16 mm
184864	38	100.2mm	96.88 mm	40 mm	10 mm	16 mm