

# Actuator

61-1310.0

Distribution by  
Rs-online



<https://rs-online.eao.com/p/61-1310.0>

Your product:

---



## 61-1310.0 Actuator

### FRONT

Front dimension:	Ø 18 mm
Front form:	Round
Front bezel colour:	Black
Front bezel material:	Plastic

### MOUNTING

Mounting cut-out:	Ø 16 mm
Mounting type:	Panel mounting

### OPERATING-/INDICATION PART

Lens illumination:	Illuminated
--------------------	-------------

### MECHANICAL CHARACTERISTIC

Switching action:	Maintained or momentary
Mechanical lifetime:	According to DIN/IEC 60512-5-6 and EN/IEC 60947-5-1, 1 Mil. cycles of operation (maintain), 2 Mil. cycles of operation (momentary)
Operating force:	3 N ... 5 N snap-action switching element, 3.5 ... 11 N slow-make switching element
Operating Travel:	3 mm
Tightening torque:	Max. 0.5 Nm
Weight:	0.005 kg

### AMBIENT CONDITION

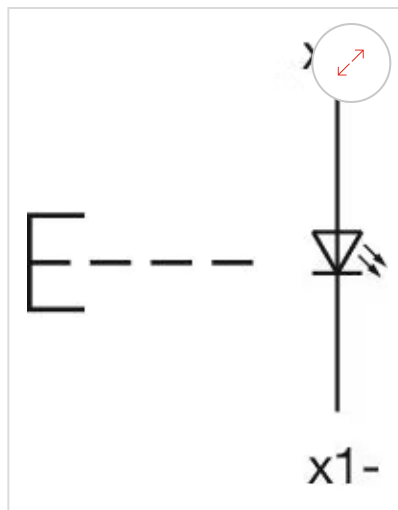
<b>IP Protection:</b>	IP40 rear side, according to EN IEC 60529, IP67 front side, according to EN IEC 60529
<b>Operating temperature:</b>	– 25 °C ... + 55 °C
<b>Storage temperature:</b>	– 40 °C ... + 85 °C

## CERTIFICATE

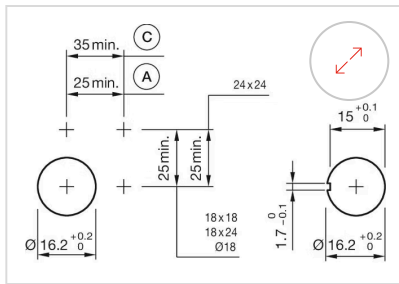
<b>REACH:</b>	REACH compliant
<b>RoHS:</b>	RoHS compliant

## OTHER

<b>Short Description:</b>	Actuator, Ø 16 mm, Ø 18 mm, Illuminated, Round, Black, Plastic, Maintained or momentary
<b>Internal size:</b>	Ø 15,8 mm
<b>Housing colour:</b>	Black
<b>Housing material:</b>	Plastic, according to UL 94 V0, self-extinguishing
<b>Product attributes:</b>	Convertible from momentary to maintained action
<b>Hints:</b>	Convertible from momentary to maintained action
<b>Wiring diagrams:</b>	

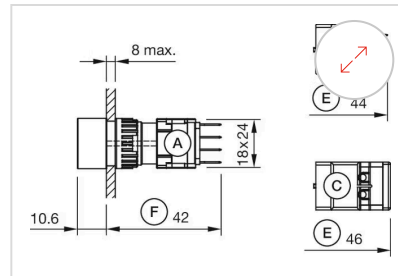


**Mounting cut-outs:**



A = Solder/Plug-in terminal 2.8 mm x 0.5 mm  
C = Screw terminal

#### Dimension drawings:



A = Plug-in terminal 2.8 mm x 0.5 mm  
C = Screw terminal  
E = Slow-make switching element  
F = Snap-action switching element