



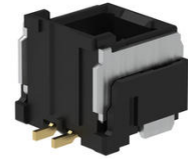
Part Number : [2132250211](#)

Product Description : 1.50mm Pitch CLIK-Mate Wire-to-Board PCB Receptacle, Single Row, Surface Mount, Vertical, 0.10µm Gold (Au) Plating, 2 Circuits, Black

Series Number : 213225

Status : Active

Product Category : PCB Headers and Receptacles



Documents & Resources

Drawings

[2132250211 sd.pdf](#)

3D Models and Design Files

[STEP AP242](#)

[SOLIDWORKS](#)

[Creo](#)

[Symbol and Footprint \(Multi-Format\)](#)

[2132250211.dxf](#)

Specifications


[2132259200-SPK-200.pdf](#)

[5025781004-PS-000.pdf](#)

[5025780004-PS-000.pdf](#)

Product Environment Compliance

Compliance

GADSL/IMDS	Not Relevant
China RoHS	 per SJ/T 11365-2006
EU ELV	Not Relevant
Low-Halogen Status	Not Low-Halogen per IEC 61249-2-21
REACH SVHC	Not Contained per D(2024)6225-DC (07 Nov 2024)

EU RoHS	Compliant per EU 2015/863
---------	---------------------------

Compliance Statements

- EU RoHS
- REACH SVHC
- Low-Halogen

Industry Documents

- IPC 1752A Class C
- IPC 1752A Class D
- Molex Product Compliance Declaration
- IEC-62474
- chemSHERPA (xml)

Substances of Interest

- PFAS

EU RoHS Certificate of Compliance

Additional Product Compliance Information

Part Details

General

Status	Active
Category	PCB Headers and Receptacles
Series	213225
Description	1.50mm Pitch CLIK-Mate Wire-to-Board PCB Receptacle, Single Row, Surface Mount, Vertical, 0.10µm Gold (Au) Plating, 2 Circuits, Black
Application	Signal, Wire-to-Board
Component Type	PCB Receptacle
Product Name	CLIK-Mate
UPC	193264239016

Agency

UL	E29179
----	--------

Electrical

Current - Maximum per Contact	2.0A
Voltage - Maximum	100V AC (RMS)/DC

Physical

Circuits (Loaded)	2
Circuits (maximum)	2
Color - Resin	Black
Durability (mating cycles max)	30
First Mate / Last Break	No
Glow-Wire Capable	No
Guide to Mating Part	Yes
Keying to Mating Part	Yes
Lock to Mating Part	Yes
Material - Metal	Copper Alloy
Material - Plating Mating	Gold
Material - Plating Termination	Tin
Material - Resin	Polyamide
Net Weight	391.000/mg
Number of Rows	1
Orientation	Vertical
Packaging Type	Embossed Tape on Reel
PCB Locator	No
PCB Retention	Yes
Pitch - Mating Interface	1.50mm
Pitch - Termination Interface	1.50mm
Plating min - Mating	0.102µm
Plating min - Termination	0.102µm
Polarized to Mating Part	Yes
Polarized to PCB	No
Stackable	No
Temperature Range - Operating	-40° to +105°C
Termination Interface Style	Surface Mount

Mates With / Use With

Mates with Part(s)

Description	Part Number
1.50mm Pitch CLIK-Mate Single	<u>502578</u>

Row Plug Housings	
-------------------	--

This document was generated on Sep 23, 2025