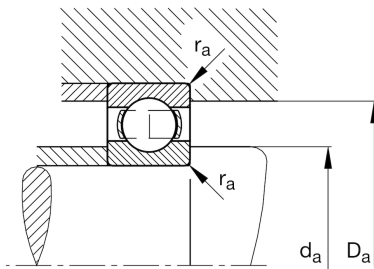
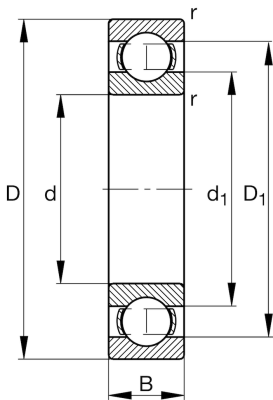


**FAG****6020**

Deep groove ball bearing

Schaeffler ID:  
0167183480000Deep groove ball bearing 60, single row,  
steel sheet metal cage

## Technical information

**Main Dimensions & Performance Data**

d	100 mm	Bore diameter
D	150 mm	Outside diameter
B	24 mm	Width
$C_r$	64.000 N	Basic dynamic load rating, radial
$C_{0r}$	54.000 N	Basic static load rating, radial
$C_{ur}$	3.050 N	Fatigue load limit, radial
$n_G$	6.100 1/min	Limiting speed
$n_{gr}$	5.100 1/min	Reference speed
	1,32 kg	Weight

**Mounting dimensions**

$d_{a \min}$	107 mm	Minimum diameter shaft shoulder
$D_{a \max}$	143 mm	Maximum diameter of housing shoulder
$r_{a \max}$	1,5 mm	Maximum fillet radius

**Dimensions**

$r_{\min}$	1,5 mm	Minimum chamfer dimension
$D_1$	134,1 mm	Shoulder diameter outer ring
$d_1$	116,6 mm	Shoulder diameter inner ring

**Temperature range**

$T_{\min}$	-30 °C	Operating temperature min.
$T_{\max}$	150 °C	Operating temperature max.

**Calculation factors**

$f_0$	15,8	Calculation factor
-------	------	--------------------