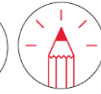


## GERBEURS



80 - 150 KG

### The Moovit® 304 L stainless steel

A range of single-material stackers with manual movement and electric lift, designed to guarantee ergonomic and safe use for professionals. Lightweight, manoeuvrable and compact, they are available in steel/aluminium or 304 L stainless steel. They can be combined with a wide range standard and customised accessories for drums, totes, reels, etc.

#### Performance :

- Robust construction for intensive use.
- Lifting speed 150 or 165 mm/s with the option of custom programming.
- 10hrs autonomy with 10 cycles/hr for a 150kg load and use between 10 and 20°.
- Batteries: AGM 2 × 12V 22Ah, recharge time: 4h for 80% - 8h for 100%.

#### Versatility :

- Quick-change accessory kit.
- Available on request in 200 kg and 2000 mm lift versions.

#### Safety :

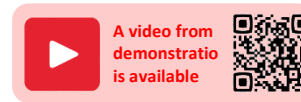
- Rear wheels with anti-crush foot protection.
- Device to prevent the stacker from tipping over in the event of an obstacle on the descent path.
- Complies with Machinery Directive 2006/42/EC and standard ISO 3691-5. Complies with CRAM R-367 recommendations.

#### Maintenance & warranty :

- 3-year guarantee, excluding wearing parts. Components available from stock. After-sales service and maintenance at our Normandy factory.

**Supplied without accessories.**

ATEX on



\*Note: Lifting capacity depends on the UC of the equipment on which the attachment is mounted. It also depends on the position of the load's centre of gravity in relation to the mast of the stacker on which it is mounted.

The UC is given for a load positioned 250mm from the mast. For more information, see the load chart supplied with the equipment.

Reference	UC*	Lifting stroke	Lifting speed	Dimensions excl. VAT (DxWxH)	Useful spacing	Wheels	Wheel material	Weight
855 009 556	80	1200	150 mm/s	964 x 584 x 1580	430	Swivelling	Polyurethane	76
855 009 557		1600		964 x 584 x 1980				80
855 009 558	150	1200	165 mm /s	1007 x 587 x 1580		Fixed front		86
855 009 559		1600		1007 x 587 x 1980				94

## PRODUCT ZOOM



Butterfly handles to adjust hand position to the operator's height.



Charge indicator.

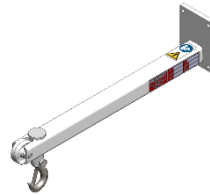
## ACCESSORIES



Stainless steel quick-release fasteners (for easy accessory changes without tools)

855 009 593 - Fixed part: Fits on the stacker mast. To be ordered with the stacker.

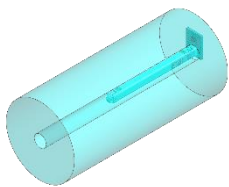
855 009 594 - Movable part: Fits onto the accessory then snaps onto the fixed part. To be ordered with each accessory.



Lifting hook + roller spur

Provides a jib crane for handling loads fitted with a ring or sling. Usable length: 480.50 mm. CU 100kg.

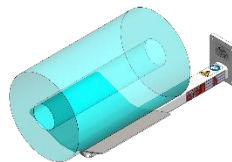
855 009 579 - Stainless steel



Roller spur

Moves reels with a minimum bore of 53 mm. The roller makes it easy to load and unload the load. Usable length: 480.50 mm. CU 300kg.

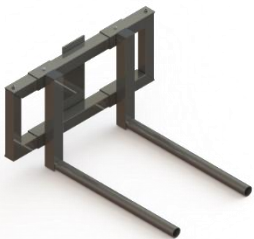
855 009 574 - Stainless steel



Rotating "V" top + roller spur

Handles Ø 600 mm cylindrical loads. 360° rotation. CU 100kg.

855 009 578 - Stainless steel

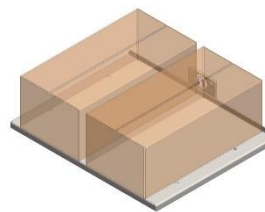


Double sliding spur

For cylindrical loads, adjustable in width from 180 to 430 mm. Working length: 421 mm. Ø 34 mm tube. CU 300kg.

855 009 565 - Steel

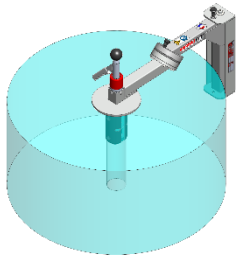
855 009 573 - Stainless steel



Stainless steel tray

Dimensions: 500 × 400 mm.

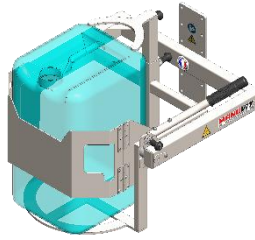
855 009 575



#### Coil turner

Handles coils using an expanding jaw. Allows a coil to be lifted and turned from horizontal vertical and vice versa by holding it by its central axis. Bore from  $\varnothing$  70 mm. CU 90kg.

855 009 590 - Steel



#### Rotobidon Empty a can

855 009 591 - Steel, CU 60kg, for 20-30L drums

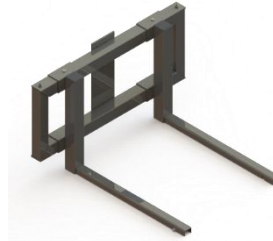
855 009 592 - Steel, CU 90kg, for 60L drums



#### Constant level

Positions a load at the required height and automatically maintains this height regardless of load variations. *Please consult us for any request involving loads of different materials and/or colours to be detected.*

855 009 596

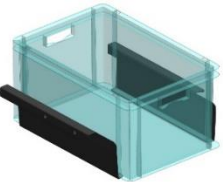


#### Sliding forks

Width-adjustable from 180 to 430 mm. Usable length: 421 mm. In 30 mm square tube. CU 300kg.

855 009 564 - Steel

855 009 572 - Stainless steel

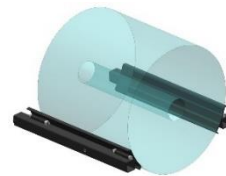


#### 2-position plates

Mount on sliding forks. An essential accessory for handling plastic bins, cardboard boxes, etc. to pick up the bin from underneath or by the edge. Allows the load to be positioned further or further away from the carriage. Bins or cartons from 128 to 367 mm wide  $\times$  450 mm.

855 009 571 - Steel

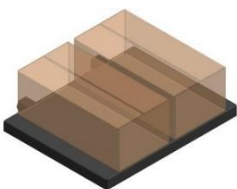
855 009 580 - Stainless steel



#### Tiltable sleeves

Clip onto sliding forks. For handling coils or drums. CU 300kg.

855 009 595 - Steel



#### 2-position trays

Clip onto sliding forks. Enables the accessory to be positioned further or further away from the carriage. The 2 positions are obtained by push-buttons. Dimensions: 500  $\times$  450 mm. CU 300kg.

855 009 567 - Steel

855 009 576 - Stainless steel