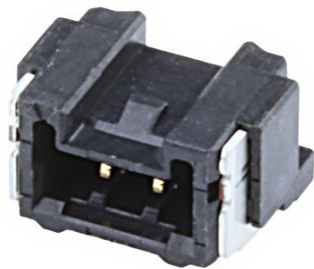




**Part Number :** [5055670281](#)  
**Product Description :** 1.25mm Pitch, Micro-Lock Plus PCB Header, Single Row, Right-Angle, Surface Mount, 0.10µm Gold Plating, Positive Lock, 2 Circuits, Black  
**Series Number :** 505567  
**Status :** Active  
**Product Category :** PCB Headers and Receptacles



## Documents & Resources

### Drawings


- [5055670281 sd.pdf](#)
- [3D Models and Design Files](#)
- [5055670281.dxf](#)
- [5055670281 stp.zip](#)

### Specifications

- [5055650000-AS-000.pdf](#)
- [5055679200-200.pdf](#)
- [5055650002-000.pdf](#)
- [5055651002-PS-000.pdf](#)

## Product Environment Compliance

### Compliance

|                    |  |
|--------------------|--|
| GADSL/IMDS         | Compliant with Exemption 44; 33  |
| China RoHS         | <br>per SJ/T 11365-2006 |
| EU ELV             | Not Relevant   |
| Low-Halogen Status | Not Low-Halogen per IEC 61249-2-21   |
| REACH SVHC         | Not Contained per D(2024)7663-DC (21 Jan 2025)   |
| EU RoHS            | Compliant per EU 2015/863  |

### Compliance Statements

- EU RoHS
- REACH SVHC
- Low-Halogen

### Industry Documents

- IPC 1752A Class C
- IPC 1752A Class D
- Molex Product Compliance Declaration
- IEC-62474
- chemSHERPA (xml)

### Substances of Interest

- PFAS

### EU RoHS Certificate of Compliance

### Additional Product Compliance Information

---

## Part Details

### General

|                |   |
|----------------|---|
| Status         | Active  |
| Category       | PCB Headers and Receptacles   |
| Series         | 505567  |
| Description    | 1.25mm Pitch, Micro-Lock Plus PCB Header, Single Row, Right-Angle, Surface Mount, 0.10µm Gold Plating, Positive Lock, 2 Circuits, Black |
| Application    | Signal, Wire-to-Board   |
| Component Type | PCB Header  |
| Product Name   | Micro-Lock Plus   |
| UPC            | 889056855396  |

### Agency

|    |        |
|----|--------|
| UL | E29179 |
|----|--------|

### Electrical

|                               |                 |
|-------------------------------|-----------------|
| Current - Maximum per Contact | 1.5A            |
| Voltage - Maximum             | 50V AC (RMS)/DC |

### Physical

|                                |                       |
|--------------------------------|-----------------------|
| Breakaway                      | No                    |
| Circuits (Loaded)              | 2                     |
| Circuits (maximum)             | 2                     |
| Color - Resin                  | Black                 |
| Durability (mating cycles max) | 30                    |
| First Mate / Last Break        | No                    |
| Glow-Wire Capable              | No                    |
| Guide to Mating Part           | No                    |
| Keying to Mating Part          | Yes                   |
| Lock to Mating Part            | Yes                   |
| Material - Metal               | Brass                 |
| Material - Plating Mating      | Gold                  |
| Material - Plating Termination | Gold                  |
| Material - Resin               | Polyamide             |
| Net Weight                     | 118.000/mg            |
| Number of Rows                 | 1                     |
| Orientation                    | Right Angle           |
| Packaging Type                 | Embossed Tape on Reel |
| PCB Locator                    | No                    |
| PCB Retention                  | Yes                   |
| Pitch - Mating Interface       | 1.25mm                |
| Pitch - Termination Interface  | 1.25mm                |
| Plating min - Mating           | 0.100µm               |
| Plating min - Termination      | 0.050µm               |
| Polarized to Mating Part       | Yes                   |
| Polarized to PCB               | Yes                   |
| Robotic Placement              | Vacuum Pick-Up Area   |
| Shrouded                       | Fully                 |
| Stackable                      | No                    |
| Temperature Range - Operating  | -40° to +105°C        |
| Termination Interface Style    | Surface Mount         |

---

## Mates With / Use With

### Mates with Part(s)

| Description   | Part Number   |
|---|---------------|
| 1.25mm Pitch, Micro-Lock Plus<br>Single Row Receptacle Housings | <u>505565</u> |

---

This document was generated on Jul 10, 2025