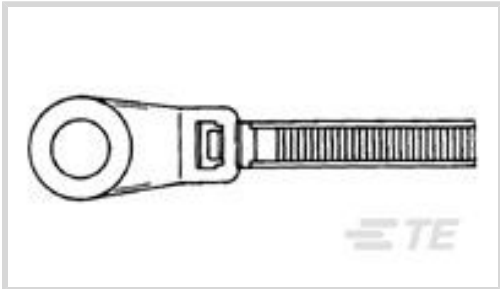




Wire & Cable > Wire & Cable Accessories > Cable Ties



Cable Tie Style: **Screw Mounted**

Packaging Method: **Box & Carton**

Tensile Strength: **200 Newton**

Product Length: **200 mm [7.9 in]**

Features

Product Type Features

Cable Tie Style	Screw Mounted
Tensile Strength	200 Newton

Body Features

Primary Product Color	Natural
Primary Product Material	Polyamide 6.6 GF

Dimensions

Compatible Cable Bundle Diameter Range	54 mm[2.13 in]
Product Length	200 mm[7.9 in]
Product Width	4.8 mm[.189 in]
Product Thickness	1.27 mm[.05 in]

Packaging Features

Packaging Method	Box & Carton
Packaging Quantity	100

Product Compliance

[For compliance documentation, visit the product page on TE.com>](#)

EU RoHS Directive 2011/65/EU	Compliant
EU ELV Directive 2000/53/EC	Compliant
China RoHS 2 Directive MIIT Order No 32, 2016	No Restricted Materials Above Threshold
EU REACH Regulation (EC) No. 1907/2006	



Current ECHA Candidate List: JAN 2025
(247)
Candidate List Declared Against: JAN 2022
(223)
Does not contain REACH SVHC

Halogen Content	Not Yet Reviewed for halogen content
Solder Process Capability	Not applicable for solder process capability

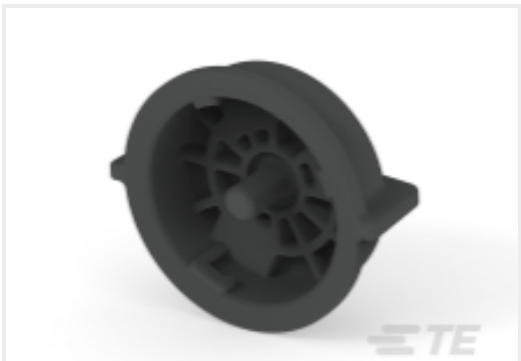
Product Compliance Disclaimer

This information is provided based on reasonable inquiry of our suppliers and represents our current actual knowledge based on the information they provided. This information is subject to change. The part numbers that TE has identified as EU RoHS compliant have a maximum concentration of 0.1% by weight in homogenous materials for lead, hexavalent chromium, mercury, PBB, PBDE, DBP, BBP, DEHP, DIBP, and 0.01% for cadmium, or qualify for an exemption to these limits as defined in the Annexes of Directive 2011/65/EU (RoHS2). Finished electrical and electronic equipment products will be CE marked as required by Directive 2011/65/EU. Components may not be CE marked. Additionally, the part numbers that TE has identified as EU ELV compliant have a maximum concentration of 0.1% by weight in homogenous materials for lead, hexavalent chromium, and mercury, and 0.01% for cadmium, or qualify for an exemption to these limits as defined in the Annexes of Directive 2000/53/EC (ELV). Regarding the REACH Regulation, the information TE provides on SVHC in articles for this part number is based on the latest European Chemicals Agency (ECHA) 'Guidance on requirements for substances in articles' posted at this URL: <https://echa.europa.eu/guidance-documents/guidance-on-reach>

Customers Also Bought



TE Part #8-1609095-9
2FB3=F8361



TE Part #2213795-1
SEALING CAP, RCPT, LUMAWISE
ENDURANCE S



TE Part #2213858-1
RECEPTACLE ASSEM., LUMAWISE
ENDURANCE S

Documents

Product Drawings
CABLE TY 200X4,8NAT
English

Datasheets & Catalog Pages
Product_Digital_Data_Sheet_2-100716-1
English