

1-Port PCI Gigabit Ethernet Network Card

ST1000BT32



*actual product may vary from photos

DE: Bedienungsanleitung - de.startech.com

FR: Guide de l'utilisateur - fr.startech.com

ES: Guía del usuario - es.startech.com

IT: Guida per l'uso - it.startech.com

NL: Gebruiksaanwijzing - nl.startech.com

PT: Guia do usuário - pt.startech.com

For the most up-to-date information, please visit: www.startech.com

FCC Compliance Statement

This equipment has been tested and found to comply with the limits for a Class B digital device, pursuant to part 15 of the FCC Rules. These limits are designed to provide reasonable protection against harmful interference in a residential installation. This equipment generates, uses and can radiate radio frequency energy and, if not installed and used in accordance with the instructions, may cause harmful interference to radio communications. However, there is no guarantee that interference will not occur in a particular installation. If this equipment does cause harmful interference to radio or television reception, which can be determined by turning the equipment off and on, the user is encouraged to try to correct the interference by one or more of the following measures:

- Reorient or relocate the receiving antenna.
- Increase the separation between the equipment and receiver.
- Connect the equipment into an outlet on a circuit different from that to which the receiver is connected.
- Consult the dealer or an experienced radio/TV technician for help.

Use of Trademarks, Registered Trademarks, and other Protected Names and Symbols

This manual may make reference to trademarks, registered trademarks, and other protected names and/or symbols of third-party companies not related in any way to StarTech.com. Where they occur these references are for illustrative purposes only and do not represent an endorsement of a product or service by StarTech.com, or an endorsement of the product(s) to which this manual applies by the third-party company in question. Regardless of any direct acknowledgement elsewhere in the body of this document, StarTech.com hereby acknowledges that all trademarks, registered trademarks, service marks, and other protected names and/or symbols contained in this manual and related documents are the property of their respective holders.

Table of Contents

Introduction	1
Packaging Contents	1
System Requirements.....	1
Installation	2
Hardware Installation	2
Driver Installation.....	2
How to Use	4
Monitoring Your Card	4
Connecting Your Card to Your Network.....	4
Tips for Setting Up Your Network.....	5
Specifications	7
Technical Support	8
Warranty Information	8

Introduction

Thank you for purchasing a StarTech.com Gigabit Ethernet adapter. Now your network can experience incredibly fast data transfer speeds of up to 1000 Mbits/sec. With its auto-sensing and auto-negotiation features, this card is also backwards-compatible with 100 Mbits/sec Fast Ethernet and 10 Mbits/sec Ethernet speeds and is capable of both full- and half-duplex communications.

The ST1000BT32 is compliant with 32-bit PCI specification

Packaging Contents

- 1 x PCI Gigabit Ethernet network adapter
- 1 x Low Profile Bracket
- 1 x Driver CD
- 1 X Instruction Manual

System Requirements

- Microsoft® Windows® 2000/ XP/ Server 2003/ Vista/ Server 2008 R2/ 7 (32/64-bit), or Novell® Netware® Server 5.x, or Netware ODI for DOS, or Linux®/ Unix®
- An available bus-mastering 32-bit PCI slot
- RJ45 terminated Cat 5e (or higher) UTP Ethernet cable

Installation



WARNING! PCI cards, like all computer equipment, can be severely damaged by static electricity. Be sure that you are properly grounded before opening your computer case or touching your PCI card. StarTech.com recommends that you wear an anti-static strap when installing any computer component. If an anti-static strap is unavailable, discharge yourself of any static electricity build-up by touching a large grounded metal surface (such as the computer case) for several seconds. Also be careful to handle the PCI card by its edges and not the gold connectors.

Hardware Installation

1. Turn your computer off and any peripherals connected to the computer (i.e. Printers, external hard drives, etc.). Unplug the power cable from the rear of the power supply on the back of the computer and disconnect all peripheral devices.
2. Remove the cover from the computer case. Refer to documentation for your computer system for details.
3. Locate an open PCI or PCI-X slot and remove the metal cover plate on the rear of the computer case.
4. Gently insert the card into the open PCI or PCI-X slot and fasten the card's bracket to the rear of the case.

NOTE: If installing the card into a small form factor/low profile system, replacing the pre-installed full profile bracket with the included low profile installation bracket may be necessary.

5. Place the cover back onto the computer case.
6. Insert the power cable into the socket on the power supply and reconnect all other connectors removed in Step 1.

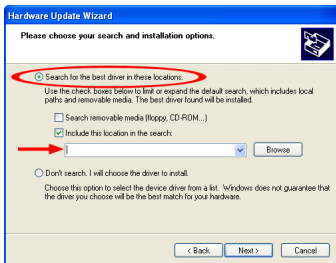
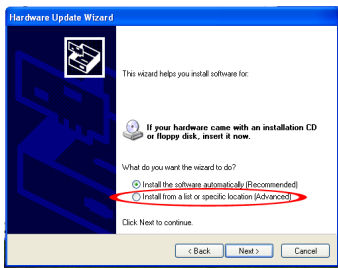
Driver Installation

NOTE: The following instructions are for Windows users only. Linux or Netware users should consult the Readme.txt files in their respective folders. Depending on your OS and the configuration of your system, the instructions below may not be identical to the instructions on your screen.

Windows 2000/ Server 2003/ XP

1. When the Found New Hardware wizard appears on the screen, insert the Driver CD into your CD/DVD drive. If you are prompted to connect to Windows Update, please select the "No, not this time" option and click Next.
2. Select the option "Install from a specific location (Advanced)" and then click the Next button.

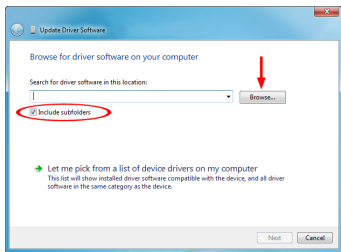
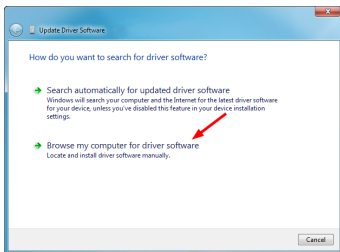
3. Select the option to “Include this location in the search” and then click the “Browse” button.



4. In the Browse window, navigate to the CD/DVD drive and select open the folder for “PCI Gigabit Lan Card (ST1000BT32)”, and then select the folder for the operating system version. Click the OK button.
5. Click the Next button and Windows should now start searching for the drivers. Once this has completed, click the Finish button.

Windows Vista/ Server 2008 R2/ 7

1. When the Found New Hardware window appears on the screen, click on the “Locate and install drivers software (recommended)” option. If prompted to search online, select the “Don't search online” option.
2. When prompted to insert the disc, insert the Driver CD that came with the card, into your CD/DVD drive and Windows will automatically proceed to search the CD.
3. If a Windows Security dialog window appears, click the “Install this driver software anyway” option to proceed.
4. Once the driver is installed, click the Close button.
5. If Windows is unable to locate drivers, go back and this time select the option to “Browse My Computer”.
6. Make sure the option to “Include subfolders” is checked, then click the “Browse” button.



7. In the Browse window, navigate to the CD/DVD drive and select open the folder for "PCI Gigabit Lan Card (ST1000BT32)", and then select the folder for the operating system. Click the OK button.
8. Click the Next button and Windows should now start searching for the drivers. Once this has completed, click the Finish button.

How to Use

Monitoring Your Card

The card uses one LED to indicate the connection rate and activity of the card. A GREEN/AMBER/OFF LED indicates that a 1000/100/10 Mbps connection (respectively) is established at that rate. A blinking LED indicates that there is traffic flow on the network.

No Link/Activity LED lit at 1000/100 Mbps indicates an error. Make sure that all devices are turned on and that the network cable is properly connected at both ends. Also make sure that your network cables comply with EIA/TIA 568 and at least Cat 5e specifications.

If problems persist, power down all devices and disconnect all plugs. Wait at least ten seconds then plug the devices back in and power them up.

Connecting Your Card to Your Network

Depending on how you are planning on using the card, the device you are connecting it to and the type of cable you need may differ. To take advantage of the card's Gigabit (1000 Mbits/sec) capacity, it is recommended that you always use at least Cat. 5e Ethernet cable. If you are unsure of the type of cable required for your device, consult your device manufacturer.

NOTE: StarTech.com carries a wide range of Cat. 5e and Cat. 6 Ethernet cables in various colors and lengths. For more information on these products, as well as tips and

ideas for setting up and running your network, visit <http://www.startech.com> and click on the Networking tab near the top of the screen.

- If you are connecting your computer directly to another computer, you need to use a crossover cable.
- If you are connecting your computer to a hub or switch, you should use a straightthrough cable.
- If you are connecting your computer to the Internet via a DSL or cable modem, you should use the cable recommended by the modem manufacturer.

Tips for Setting Up Your Network

For information and help on setting up your network, please consult the manufacturer of your operating system. The following is for tips and troubleshooting purposes only and is intended for Microsoft users on a local area network.

Make sure your computers are configured properly

For your convenience, you should configure each of your computers so that they can “see” each other and share devices and files. To do this, you have to make sure that the following have been installed on your computers:

- Client for Microsoft Networks
- TCP/IP (Internet Protocol)
- File and Print Sharing

These clients, protocols, and services can be found in the following locations:

Windows XP

1. Click on Start, then click My Network Places.
2. Click View Network Connections in the Network Tasks box.
3. Right-click on Local Area Connection and choose Properties.

Windows 2000

1. Click on Start, then Settings, then Network and Dialup Connections.
2. Double-click Local Area Connections and click the Properties button.

NOTE: If you need to add any of the following components, check your Windows documentation for details. Make sure all your computers are on the same workgroup. To be able to communicate properly with each other, each computer must be located on the same workgroup. Each computer within a workgroup must have a unique name. To ensure compatibility between each version of Windows, keep your computer names under 13 characters long. To view, add, or edit your computer's name, do the following:

Windows XP

1. Click Start and then Control Panel.
2. Double-click System then click on the computer name tab.

Windows 2000

1. Click on Start, then Settings, then Control Panel.
2. Double-click on System.
3. Click on the Network Identification tab.

Make Sure Your Sharing is Set Up Properly

1. Go to your network dialog box using the procedure explained under "Make sure your computers are configured properly."
2. Click on File and Print Sharing.
3. Choose whether you want to install one, both, or neither of these options. Click OK.
4. Decide what files or folders you want to share. You can call up sharing options by right-clicking on a file or folder and choose "Sharing" (Windows 2000/Me/98/95) or "Sharing and Security" (Windows XP).

NOTE: If you are having any difficulties setting up or using your network, please contact your operating system vendor.

Specifications

Host Interface	PCI (32-bit, 3.3V/5V)
Form Factor	Standard/Low Profile
Chipset ID	Realtek RTL8110SC
Connectors	1 x RJ45 Ethernet female
LEDs	1 x 1000 Link/Activity 1 x 100 Link/Activity
Supported Standards	IEEE 802.3 10BaseT IEEE 802.3u 100BaseTx IEEE 802.3ab 1000BaseT
Maximum Data Transfer Rate	1000/2000 Mbps (half/full duplex)
Operating Temperature	0°C ~ 55°C (32°F ~ 131°F)
Humidity	10% ~ 95% RH
Compatible Operating Systems	Windows 2000/ XP/ Server 2003/ Vista/ Server 2008 R2/ 7 (32/64-bit), Netware Server 5.x, Netware ODI for DOS, Linux, Unix

Technical Support

StarTech.com's lifetime technical support is an integral part of our commitment to provide industry-leading solutions. If you ever need help with your product, visit www.startech.com/support and access our comprehensive selection of online tools, documentation, and downloads.

For the latest drivers/software, please visit www.startech.com/downloads

Warranty Information

This product is backed by a lifetime warranty.

In addition, StarTech.com warrants its products against defects in materials and workmanship for the periods noted, following the initial date of purchase. During this period, the products may be returned for repair, or replacement with equivalent products at our discretion. The warranty covers parts and labor costs only. StarTech.com does not warrant its products from defects or damages arising from misuse, abuse, alteration, or normal wear and tear.

Limitation of Liability

In no event shall the liability of StarTech.com Ltd. and StarTech.com USA LLP (or their officers, directors, employees or agents) for any damages (whether direct or indirect, special, punitive, incidental, consequential, or otherwise), loss of profits, loss of business, or any pecuniary loss, arising out of or related to the use of the product exceed the actual price paid for the product. Some states do not allow the exclusion or limitation of incidental or consequential damages. If such laws apply, the limitations or exclusions contained in this statement may not apply to you.

Hard-to-find made easy. At StarTech.com, that isn't a slogan. It's a promise.

StarTech.com is your one-stop source for every connectivity part you need. From the latest technology to legacy products — and all the parts that bridge the old and new — we can help you find the parts that connect your solutions.

We make it easy to locate the parts, and we quickly deliver them wherever they need to go. Just talk to one of our tech advisors or visit our website. You'll be connected to the products you need in no time.

Visit www.startech.com for complete information on all StarTech.com products and to access exclusive resources and time-saving tools.

StarTech.com is an ISO 9001 Registered manufacturer of connectivity and technology parts. StarTech.com was founded in 1985 and has operations in the United States, Canada, the United Kingdom and Taiwan servicing a worldwide market.