

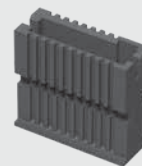


CC03R-2830-01-G

ISDF-07-D-M



TSDF-10-D-S



T1M44-L-2830-01-G



(1.27 mm) .050"

ISDF, CC03R, CC03M, TSDF, T1M44-L, T1M44-R SERIES

# DISCRETE WIRE COMPONENTS & TOOLING

## SPECIFICATIONS

For complete specifications see [www.samtec.com?ISDF](http://www.samtec.com?ISDF), [www.samtec.com?CC03R](http://www.samtec.com?CC03R) or [www.samtec.com?CC03M](http://www.samtec.com?CC03M)

**Insulator Material:**  
Black LCP  
**Contact Material:**  
BeCu

## RECOGNITIONS

For complete scope of recognitions see [www.samtec.com/quality](http://www.samtec.com/quality)



FILE NO. E111594

## TOOLING

- Hand Tool:  
CAT-HT-203-2830-12
- Clamp for mounting hand tool to work table:  
CAT-HT-MNT-01
- Mini Applicator:  
CAT-MC-203-2830-XX-01
- Extraction Tool:  
CAT-EX-169-01

**Note:**  
Some sizes, styles and options are non-standard, non-returnable.

| TYPE              | POSITIONS PER ROW  | ROW OPTION                               | OPTION  | TYPE  | WIRE GAUGE              | 01 | PLATING   |
|-------------------|--|--|---|---|-------------------------|----|---|
| ISDF<br>= Housing | -03, -04,<br>-05, -07,<br>-10, -15,<br>-20, -25,<br>-40, -50<br>(Standard sizes) | -S<br>= Single Row<br>-D<br>= Double Row | -M<br>= Metal Retention Latch<br>-S<br>= Screw Down (-D only) | CC03R<br>= Contact, Full Reel (35,000 Parts per Reel)<br>CC03M<br>= Contact, Mini Reel (1,000-5,000 Parts per Reel) | -2830<br>= 28 to 30 AWG |    | -GF<br>= Gold flash on contact<br>-G<br>= 10 μm (0.25 μm) Gold on contact |

## SPECIFICATIONS

For complete specifications see [www.samtec.com?TSDF](http://www.samtec.com?TSDF), [www.samtec.com?T1M44-L](http://www.samtec.com?T1M44-L) or [www.samtec.com?T1M44-R](http://www.samtec.com?T1M44-R)

**Insulator Material:**  
Black LCP  
**Contact Material:**  
BeCu

## TOOLING

- Hand Tool:  
CAT-HT-203-2832-11
- Mini Applicator  
CAT-MC-144-2830-XX-01
- Extraction Tool:  
CAT-EX-169-01

**Note:**  
Some sizes, styles and options are non-standard, non-returnable.

| TYPE              | POSITIONS PER ROW  | ROW OPTION         | S | TYPE   | WIRE GAUGE              | 01 | PLATING                                 |
|-------------------|--|--------------------|---|--|-------------------------|----|---|
| TSDF<br>= Housing | -03, -04,<br>-05, -07,<br>-10, -15,<br>-20, -25,<br>-40, -50<br>(Standard sizes) | -D<br>= Double Row |   | T1M44-L<br>= Contact, Loose<br>T1M44-R<br>= Contact, Full Reel (35,000 Parts per Reel) | -2830<br>= 28 to 30 AWG |    | -G<br>= 10 μm (0.25 μm) Gold on contact |

Due to technical progress, all designs, specifications and components are subject to change without notice.

[WWW.SAMTEC.COM](http://WWW.SAMTEC.COM)

All parts within this catalog are built to Samtec's specifications. Customer specific requirements must be approved by Samtec and identified in a Samtec customer-specific drawing to apply.