



Power Triple Lock

TE Internal #: 5-2232362-3
Housing, Plug, Crimp, Wire-to-Wire, UL 94V-0, 3 Position, 6 mm [.236 in] Centerline, Power Triple Lock, Rectangular Wire & Cable Connectors & Housings

[View on TE.com >](#)

Connectors > Rectangular Connectors > Standard Rectangular Connectors



Connector Product Type: **Housing**
Connector & Housing Type: **Plug**
Termination Method to Wire & Cable: **Crimp**
Connector System: **Wire-to-Wire**
Contact Retention Within Housing: **Without**

Features

Product Type Features

Connector Product Type	Housing
Connector & Housing Type	Plug
Connector System	Wire-to-Wire
Sealable	No
Connector & Contact Terminates To	Wire & Cable

Configuration Features

Number of Power Positions	3
Number of Positions	3
Number of Rows	1

Electrical Characteristics

Operating Voltage	600 VAC
-------------------	---------

Body Features

Cable Exit Angle	180°
Primary Product Color	Natural



Contact Features

Contact Layout	Inline
Contact Type	Receptacle
Contact Retention Within Housing	Without

Termination Features

Termination Method to Wire & Cable	Crimp
------------------------------------	-------

Mechanical Attachment

Panel Mount Feature	Without
Connector Mounting Type	Cable Mount (Free-Hanging)

Housing Features

Housing Material	Nylon GF
Centerline (Pitch)	6 mm[.236 in]

Usage Conditions

Operating Temperature Range	-55 – 105 °C[-67 – 221 °F]
-----------------------------	----------------------------

Operation/Application

Circuit Application	Power
---------------------	-------

Identification Marking

Circuit Identification Feature	With
--------------------------------	------

Industry Standards

Compatible With Agency/Standards Products	UL
UL Rating	Recognized
Compatible With Approved Standards Products	UL E28476
Glow Wire Rating	GWT 750°C (Without Flame)
UL Flammability Rating	UL 94V-0

Packaging Features

Packaging Method	Carton
------------------	--------

Product Compliance

For compliance documentation, visit the product page on TE.com>

EU RoHS Directive 2011/65/EU	Compliant
EU ELV Directive 2000/53/EC	Compliant



China RoHS 2 Directive MIIT Order No 32, 2016	No Restricted Materials Above Threshold
EU REACH Regulation (EC) No. 1907/2006	Current ECHA Candidate List: JAN 2025 (247) Candidate List Declared Against: JAN 2025 (247) Does not contain REACH SVHC
Halogen Content	Not Low Halogen - contains Br or Cl > 900 ppm.
Solder Process Capability	Not reviewed for solder process capability

Product Compliance Disclaimer

This information is provided based on reasonable inquiry of our suppliers and represents our current actual knowledge based on the information they provided. This information is subject to change. The part numbers that TE has identified as EU RoHS compliant have a maximum concentration of 0.1% by weight in homogenous materials for lead, hexavalent chromium, mercury, PBB, PBDE, DBP, BBP, DEHP, DIBP, and 0.01% for cadmium, or qualify for an exemption to these limits as defined in the Annexes of Directive 2011/65/EU (RoHS2). Finished electrical and electronic equipment products will be CE marked as required by Directive 2011/65/EU. Components may not be CE marked. Additionally, the part numbers that TE has identified as EU ELV compliant have a maximum concentration of 0.1% by weight in homogenous materials for lead, hexavalent chromium, and mercury, and 0.01% for cadmium, or qualify for an exemption to these limits as defined in the Annexes of Directive 2000/53/EC (ELV). Regarding the REACH Regulation, the information TE provides on SVHC in articles for this part number is based on the latest European Chemicals Agency (ECHA) 'Guidance on requirements for substances in articles' posted at this URL: <https://echa.europa.eu/guidance-documents/guidance-on-reach>

Compatible Parts

TE Part # 1452426-1
EXTRACTION TOOL

TE Part # 1971777-3
PTL TPA HIGH TEMP 1 x 3 BLACK

TE Part # 2232723-1
PTL MFBL RECPT CONTACT, 16-19 AWG, 2X22

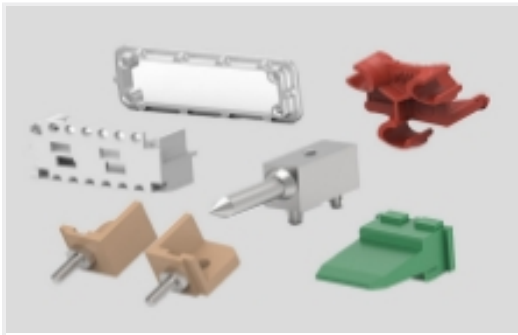
TE Part # 5-2232353-3
PTL MFBL 1X3 CAP PANEL MT GLW WIRE NAT

TE Part # 1971789-1
CPA

Also in the Series | Power Triple Lock



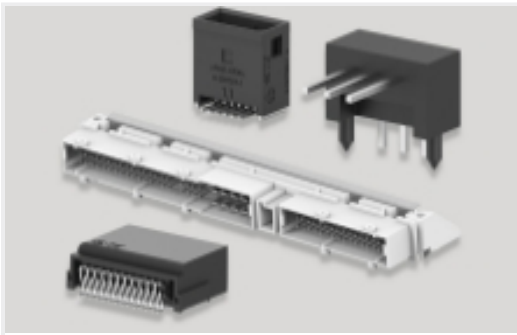
Connector Contacts(26)



Connector Hardware(12)



Insertion & Extraction Tools(1)



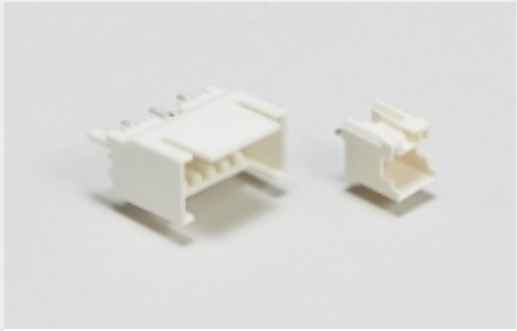
PCB Headers & Receptacles(21)



Power Contacts(26)

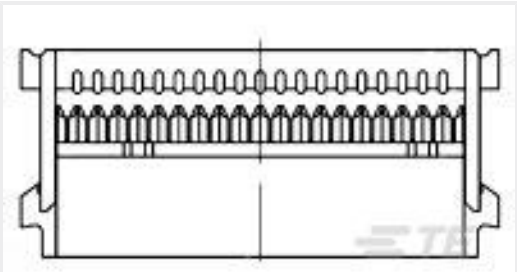


Rectangular Power Connectors(301)



Wire-to-Board Headers & Receptacles (21)

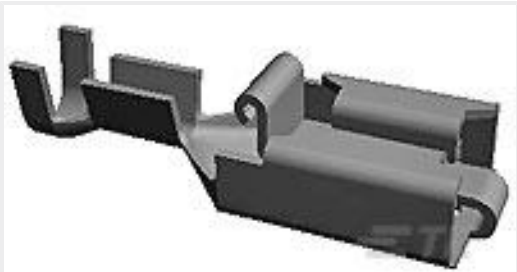
Customers Also Bought



TE Part #1-1658526-3
609-2041LF FEM SOCKET, LEAD FREE



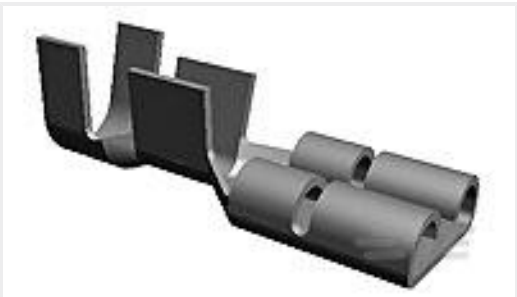
TE Part #5-2232353-3
PTL MFB 1X3 CAP PANEL MT GLW WIRE NAT



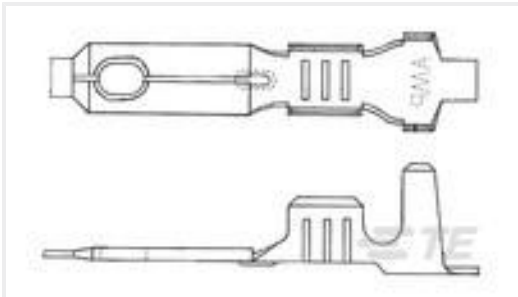
TE Part #880645-6
PL REC 1.0-2.5MM2 0.40 X 52.32 PTPBR



TE Part #1-2133394-1
187 FASTON HSG., REC., 1 POS, NATURAL



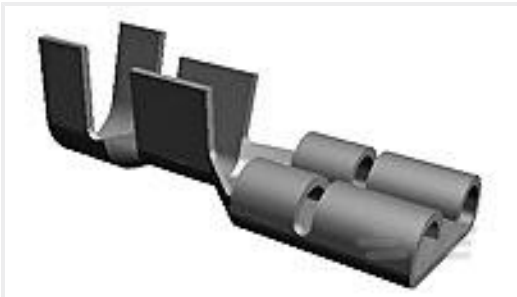
TE Part #444334-1
250 FASTON REC 22-18 AWG BR



TE Part #880633-1
110 FASTON REC 20-17 AWG BR



TE Part #CAT-C8114-M8794
MRI LED Lighting Filters, Corcom



TE Part #444334-3
250 FASTON REC 22-18 AWG BR



TE Part #880626-2
RING TONGUE 0.5-1.0 MM2 0.60X13.23 TPBR

Documents



CAD Files

3D PDF

3D

Customer View Model

ENG_CVM_CVM_5-2232362-3_B.2d_dxf.zip

English

Customer View Model

ENG_CVM_CVM_5-2232362-3_B.3d_igs.zip

English

Customer View Model

ENG_CVM_CVM_5-2232362-3_B.3d_stp.zip

English

By downloading the CAD file I accept and agree to the [Terms and Conditions](#) of use.

Datasheets & Catalog Pages

Make First, Break Last Power Triple Lock Connector

English

9-1773465-1Power Triple Lock QRG

English

Product Specifications

Application Specification

English

Application Specification

English