

Features

- One Piece Rigid Coupling
- Bore tolerance $+0.012/+0.050$ mm
- Material – Stainless Steel 303 (SS)
- Precision machined bore = Ra 0.8
- Patchlock Anti-Vibration Screws
- Recommended shaft tolerance $+0 / - .013$ mm

RS PRO Rigid Coupling

RS-Stock Number:

0606037 , 0606040, 0606043



RS PRO is the own brand of RS. The RS PRO Seal of Approval is your assurance of professional quality, a guarantee that every part is rigorously tested, inspected, and audited against demanding standards. Making RS PRO the Smart Choice for our customers.

Product Description

RS PRO Rigid couplings are ideal for applications requiring precise, inflexible shaft connections. Rigid couplings do not permit radial or axial motion in the shaft between the driver and the driver unit, so they operate as a single shaft. Rigid couplings are primarily used in vertical applications. They offer high torque transmission, reliable performance, and are widely used in industries where shaft alignment is critical. However, they are best suited for applications where there is no room for misalignment, as they do not tolerate movement or vibration.

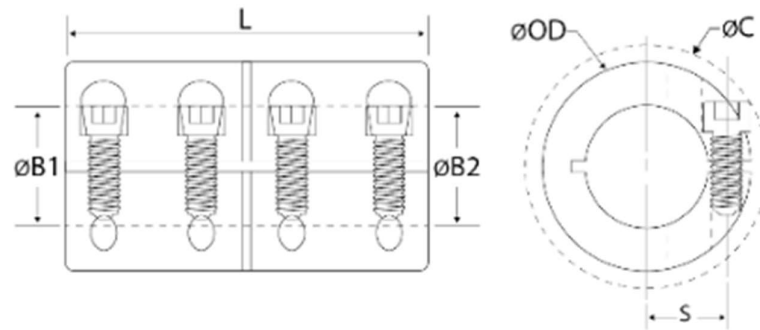
General Specifications

Material	Stainless Steel
Coupling Type	Shaft Coupling
Series	RCS
One / Two Piece	One Piece
Metric / Imperial	Metric

Mechanical Specification

Material	Stainless Steel 303 (SS)
Bore tolerance	+0.012/+0.050 mm
Precision machined bore	Ra 0.8
Fastening Type	Patchlock Anti-Vibration Screws
Recommended shaft tolerance	+ 0 / - .013 mm

Mechanical Specification



Stock No.	Bore $\varnothing B1$ & $B2$	Outside Diameter $\varnothing OD$	Length L	Screw Lock S	Clearance diam. C (mm) max	Forget Clamp Screw
Unit of measure: mm						
0606037	8	24	35	9	27.1	M3
0606040	10	29	45	10.6	33	M4
0606043	12	29	45	10.6	33	M4

