



The performance features at a glance

- 4 and 8-channel NVR
- Standalone (Linux based)
- Supports megapixel cameras
- Remote access via network / Smartphone
- Java-based remote access

High versatility

The KNR series IP recorders offer a comprehensive solution for the recording of network cameras. Helpful assistants and automated functions make initialization easier and support practical use.

Outstanding advantages

The whole of the user interface, which is accessible with standard browsers, is clearly designed and is easy to adapt to your individual requirements.

This means that you get the best overview in the live view, but you can also access saved recordings quickly and easily.

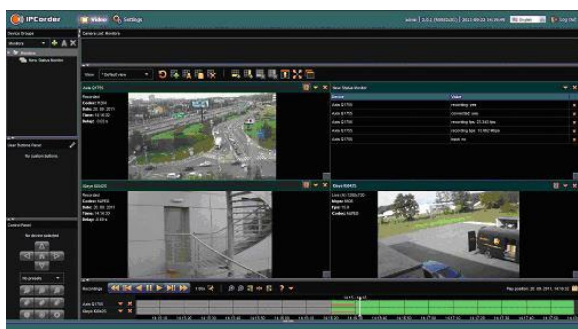
High-performance technology

Recorders with 4 or 8 channels are available from the KNR series. The high performance and yet power saving hardware also facilitates the incorporation of megapixel cameras, from the GANZ PixelPro range, for instance.

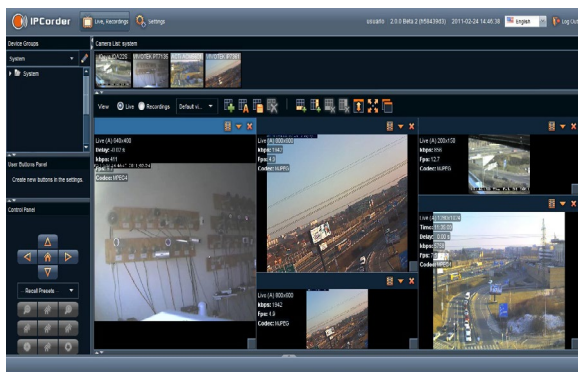
Other special features

If you would like you can also get the system to send you an email in the case of events. Or a status report every day. This means that you automatically stay up-to-date and in the know.

It is possible to install up to one harddisk in the KNR-1000 series.



Playback menu



Live-View

Order data

Order number

KNR-1004
KNR-1008

Product description

4/8-channel network recorder (NVR), Linux-based, supports megapixel cameras, Java-based remote access, 10/100/1000 Base-T, 1 harddisk installable up to 3TB, 12VDC

IP-Recorder KNR1000-Series



Advantages for the installer

The many assistants mean that setting up the system is also easy. All of the configuration settings can be secured. Detailed user rights can also be allocated.

And last but not least, UPnP will also support you in setting up your router so that you are able to access the internet on the recorder.

Technical specifications	KNR-1004	KNR-1008
Operating system	Linux	
Channels	4 (max. 16Mbps)	8 (max. 32Mbps)
HDD installable	1 (up to 3TB)	
Recording mode	Continuous, schedule, motion detection (camera controlled)	
Playback	Time search, event search	
Interfaces	10/100/1000 Base-T, 1x USB	
Time-/Date settings	NTP	
Remote access	Java-based interface, compatible browser IE 7+, Firefox 3.5+, Chrome 12+, Safari 4/5, Android, iPhone	
OSD languages	English, german, czech, chinese	
User rights	Administrator, user, custom (device settings, live view, recordings, logs, system settings, remote access, user settings, log-in)	
Operating temperature	0°C - 40°C	
Operating voltage	12VDC	
Dimensions (WxHxD) mm	120 x 35 x 210	
Weight	475g	
Package contents	power supply, power cord, network cable, CD	

Compatible GANZ-Models:



Click [here](#) for further informations on supported devices.

Following cameras from these suppliers are also integrated:

ACTi, Arecont Vision, Axis, D-Link, IQeye, NETIO, Panasonic, Sony, Vivotek, 3S Vision, Y-cam, HWGroup, Hikvision

CBC (Europe) GmbH
Hansaallee 191
D-40549 Düsseldorf
T: +49-(0)211 53 06 70
F: +49-(0)211 53 06 71 80
info@cbc-europe.com
www.cbc-europe.com

CBC (Poland) Sp.z.o.o.
Oddział w Warszawie
Ul. Krasynskiego 41A
PL-01-755 Warsaw
T: +48-(0)22 6 33 90 90
F: +48-(0)22 6 33 90 60
info@cbcpoland.pl
www.cbcpoland.pl

CBC Russia Moscow Rep. office
Office 503B World Trade Center
12 Krasnopresnenskaya nab.
RU-1123610 Moscow
T: +7-495 258 2161
F: +7-495 258 2160
info@cbc.ru
www.cbc.ru

CBC (Europe) Ltd. Ufficio di Milano
Via E. Majorana, 2
I-20834 Nova Milanese (MB)
T: +39-0362 36 50 79
F: +39-0362 4 00 12
info@cbceurope.it
www.cbceurope.it

CBC CORPORATION (INDIA), PRIVATE LTD
2F B Wing, Marwah Centre
Krishanlal Marwah Marg
Andheri East, Mumbai 400 072, India
T: +91 22 2857 9798
F: +91 22 6649 1708
enquiry@cbcindia.jp

CBC (Europe) GmbH
7/8 Garrick Industrial Centre
Irving Way
UK-NW9 6AQ London
T: +44-(0)20 87 32 33 10
F: +44-(0)20 82 02 33 87
info@cbcuk.com
www.cbceurope.com