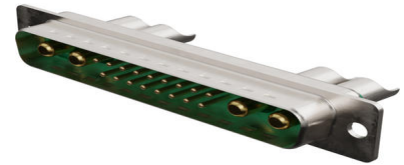




Part Number : [1731070195](#)

Product Description : FCT Mixed Layout D-Sub Connector, Male, Straight, Solder Cup, Gold over Nickel Phosphorus Plating, Tin-plated Shell with Dimples, 21 Circuits Loaded (4 High Power, 17 Signal), Green Insulator



Series Number : 173107

Status : Active

Product Category : D-Sub Connectors

Engineering Number : FM21WA4PA-5228

Documents & Resources

Drawings

[1731070195 sd.pdf](#)

[STEP AP242](#)

[SOLIDWORKS](#)

[Creo](#)

Product Environment Compliance

Compliance

GADSL/IMDS	Not Relevant
China RoHS	per SJ/T 11365-2006
EU ELV	Not Relevant
Low-Halogen Status	Not Reviewed per IEC 61249-2-21
REACH SVHC	Contains Lead per D(2023)3788-DC (14 Jun 2023)
EU RoHS	Compliant with Exemption 6(c) per EU 2015/863

Compliance Statements

- EU RoHS
- REACH SVHC
- Low-Halogen

Industry Documents

- IPC 1752A Class C
- IPC 1752A Class D
- Molex Product Compliance Declaration
- IEC-62474
- chemSHERPA (xml)

Substances of Interest

- PFAS

EU RoHS Certificate of Compliance

Additional Product Compliance Information

Part Details

General

Status	Active
Category	D-Sub Connectors
Series	173107
Description	FCT Mixed Layout D-Sub Connector, Male, Straight, Solder Cup, Gold over Nickel Phosphorus Plating, Tin-plated Shell with Dimples, 21 Circuits Loaded (4 High Power, 17 Signal), Green Insulator
IP Rating	IP20
Magnetic	Yes
Product Name	FCT Products
Type	Mixed Layout
UPC	889056653411

Electrical

Current - Maximum per Contact	7.5A, 40.0A
Shielded	Yes

Physical

Circuits (Loaded)	17
Circuits (maximum)	21
Color - Resin	Green
Durability (mating cycles min)	500

Gender	Male
Material - Contact	Copper Alloy
Material - Resin	PBT
Material - Shell	Steel
Net Weight	20.400/g
Number of Rows	2
Orientation	Straight
Packaging Type	Carton
Panel Mount	Front or Rear
Panel Mount Method	Flange
PCB Retention	None
PCB Thickness - Recommended	1.60mm
PC Tail Length	7.40mm
Pitch - Mating Interface	2.84mm
Pitch - Termination Interface	2.54mm
Plating - Contact	Gold over Nickel Phosphorus Gold over Nickel Phosphorus/Tin over Nickel
Plating min - Mating	0.100µm
Plating min - Termination	0.100µm, 5.000µm
Plating - Shell	Tin
Polarized to Mating Part	No
Polarized to PCB	No
Ports	1
Temperature Range - Operating	-55° to +130°C
Termination Style	Solder Cup
Waterproof / Dustproof	No
Waterproof / Dustproof Type	IP20
Wire Size (AWG)	8, 10, 12, 20

Mates With / Use With

Mates with Part(s)

Description	Part Number
Mates With	FCT Mixed Layout D-Sub, Size 4, 21WA4, Socket

