

## Features

- Rated currents up to 20A
- Terminal Block
- The compact size can be applied to various situations.
- General purpose filtering performance

## RS PRO EMI Filters

RS Stock No.: 286-7268



RS PRO is the own brand of RS. The RS PRO Seal of Approval is your assurance of professional quality, a guarantee that every part is rigorously tested, inspected, and audited against demanding standards. Making RS PRO the Smart Choice for our customers.

## Product Description

*High performance single phase chassis mount EMI filter Applications:*

- *Electrical and electronic equipment*
- *Medical equipment*
- *Office automation equipment*
- *New energy equipment ,Communication equipment;*

## General Specifications

The compact size can be applied to various situations.

This filter is also available as one-stage filters in noisy environment.

## Electrical Specifications

*Size( Length\*Width\*Height)* 96\*80\*41mm

*Weight* 0.64kgs

*Mounting Hole Spacing* 95\*50mm

## Mechanical Specifications

*Rated Voltage Max.* 115/250VAC

<i>Rated currents</i>	20A
<i>Operating frequency</i>	50/60Hz
<i>Hipot Rating</i>	Line to Ground 2250VDC Line to Line 500VDC
<i>Temperature range</i>	-25°C~+85°C
<i>Leakage current</i>	6.0mA/12.0mA
<i>Inductance</i>	L: 2x3.5mH ;
<i>Capacitance</i>	Cx1: 2.2uF; Cx2: 1.0uF; Cy1:10000pF*2; Cy2: 47000pF*2;
<i>Resistance</i>	R:1M ohm

## Protection Category

*IP Rating* IP40

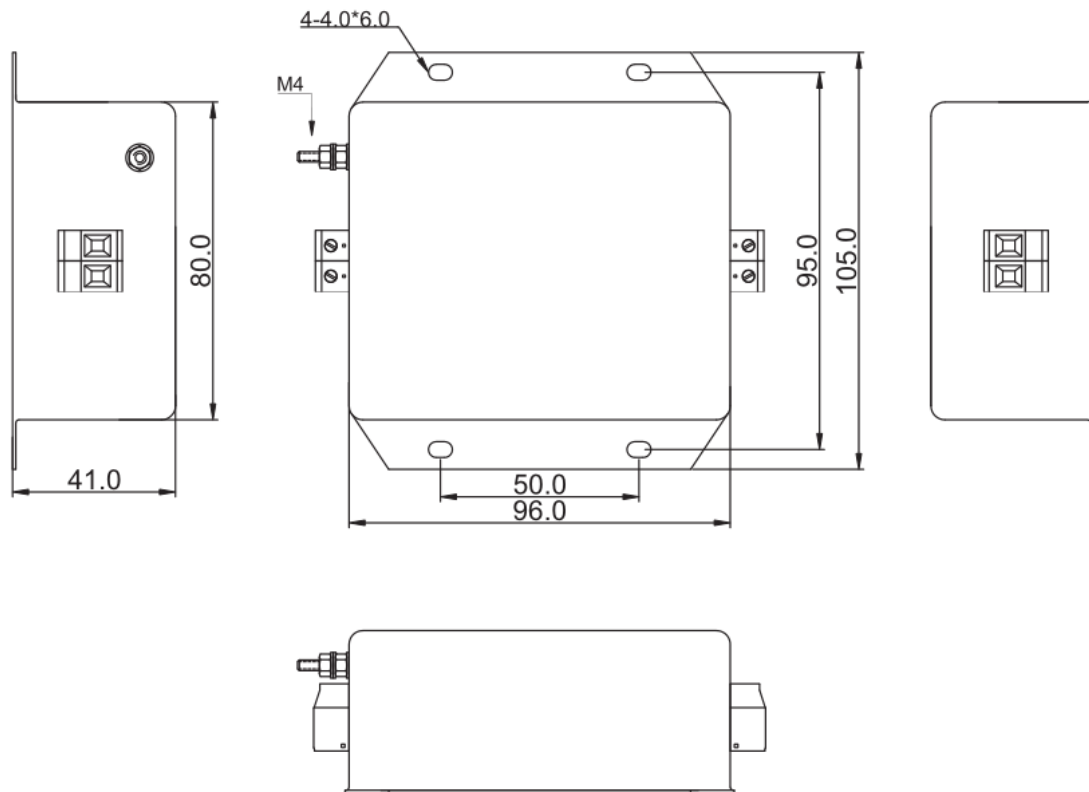
## Approvals

<i>Declarations</i>	UL CE UKCA REACH ROHS
<i>Safety Standard</i>	UL/EN 60939, UL1283; CSA C22.2 No.8;

## Similar Products

Stock No.	Brand	Phase Type	Mounting	Current	Dimension
237-8707	RS PRO	Single phase	Chassis mounting	16A	120*100*50mm

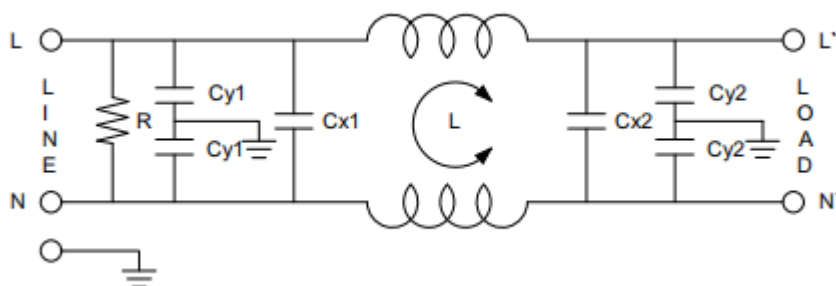
## Physical Dimensions (Unit:mm)



Applicable wire
Flex wire:0.2~4mm <sup>2</sup>
Solid wire:0.2~6mm <sup>2</sup>
Torque:0.6Nm
Stripping Length:8mm

0 ~ 10	±0.3
10 ~ 100	±0.5
100 ~ 150	±0.8
150 ~ 200	±1.0

## Electrical Schematic



Insertion loss( IN 50ohm system according IEC/CISPR NO.17)

