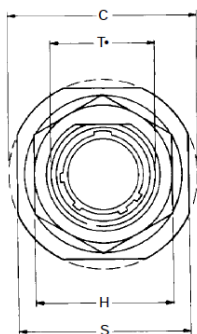
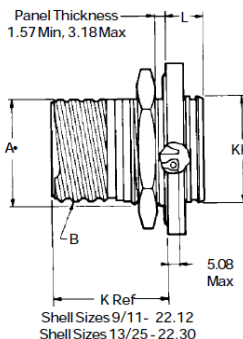




TVS07Y Hermetic Connectors



- TVS07Y-... Stainless Steel
- TVS07YN-... Nickel Plated Stainless Steel



Description:

Amphenol MIL-C-38999 threaded coupling connectors offer high performance capabilities for both general duty and harsh environment applications.

The hermetic TV series is manufactured with a stainless steel shell for high performance and corrosion resistance.

Performances:

- ✓ High performance Jam Nut receptacle with quick thread coupling mechanism
- ✓ Used in high vibration & EMI/RFI environments and on portable communication systems
- ✓ Connector for firewall application
- ✓ Cryogenic application
- ✓ Hermeticity better than $E-8 \text{ cm}^3 \cdot \text{s}^{-1}$ at 1 Atm. ΔP
- ✓ St.Steel 303S11/304S11/316S11 grade passivated shell
- ✓ RoHS compliant
- ✓ Insulation resistance $5G\Omega$ at 500 - 50 Vdc
- ✓ Operating temperature range -50 + 150 degrees C

| Shell Size | MS Shell Size Code | A+ +.00 -.25 | B Thread Class 2a 0.1P-0.3L-TS (Plated) | C Max | H Hex +.43 -.41 | L Max | S ±.25 | T -.25 -.00 | KK +.28 -.00 |
|------------|--------------------|--------------------|---|----------|--------------------------|----------|-----------|-------------------|--------------------|
| 9 | A | 16.99 | .6250 | 30.45 | 22.23 | 9.07 | 26.97 | 17.70 | 16.31 |
| 11 | B | 19.53 | .7500 | 35.20 | 25.40 | 9.07 | 31.75 | 20.88 | 19.46 |
| 13 | C | 24.26 | .8750 | 38.38 | 30.18 | 9.07 | 34.93 | 25.58 | 22.66 |
| 15 | D | 27.53 | 1.0000 | 41.55 | 33.32 | 9.07 | 38.10 | 28.80 | 25.86 |
| 17 | E | 30.68 | 1.1875 | 44.73 | 36.53 | 9.07 | 41.28 | 31.98 | 29.01 |
| 19 | F | 33.86 | 1.2500 | 49.50 | 39.67 | 9.68 | 46.02 | 35.15 | 32.21 |
| 21 | G | 37.06 | 1.3750 | 52.65 | 42.80 | 9.68 | 49.23 | 38.28 | 35.36 |
| 23 | H | 40.01 | 1.5000 | 55.85 | 46.02 | 9.68 | 52.37 | 41.50 | 38.56 |
| 25 | J | 43.41 | 1.6250 | 59.00 | 50.80 | 9.68 | 55.58 | 44.68 | 41.71 |

All dimensions for reference only.

• D shaped panel cut-out dimensions

| Contact gauge | STD Current rate in Amp. | Possible Current rate in Amp. |
|---------------|--------------------------|-------------------------------|
| 22 | 0.9 | 3.8 |
| 20 | 2 | 5.8 |
| 16 | 4 | 13 |
| 12 | 8 | 20 |