

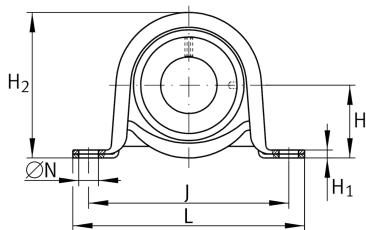
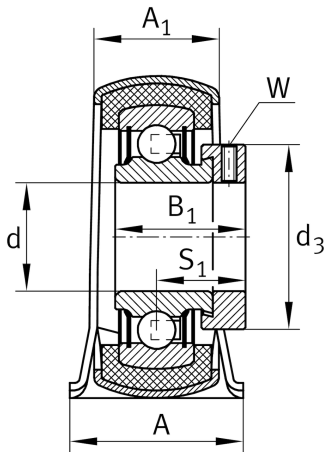
**RPB25-XL**

## Plummer block housing unit

Plummer block housing units RPB, sheet steel housing, radial insert ball bearing with eccentric locking collar and rubber interliner, P seals

**X-life**

## Technical information



## Your current product variant

|          |             |
|----------|-------------|
| Material | Steel sheet |
|----------|-------------|

## Main Dimensions &amp; Performance Data

|                   |          |                                   |
|-------------------|----------|-----------------------------------|
| d                 | 25 mm    | Bore diameter                     |
| L                 | 117.5 mm | Length total                      |
| H <sub>2</sub>    | 66.1 mm  | Height                            |
| C <sub>0r G</sub> | 1,400 N  | Load carrying capacity (housing)  |
| C <sub>r</sub>    | 14,000 N | Basic dynamic load rating, radial |
| C <sub>0r</sub>   | 7,800 N  | Basic static load rating, radial  |
| ≈m                | 0.54 kg  | Weight                            |

## Mounting dimensions

|   |         |                      |
|---|---------|----------------------|
| J | 95 mm   | Distance fixing bore |
| N | 11.5 mm | Fixing bore          |

## Dimensions

|                |         |                     |
|----------------|---------|---------------------|
| H              | 33.3 mm | Distance shaft axis |
| A              | 38 mm   | Width (base)        |
| A <sub>1</sub> | 26.5 mm | Width (head)        |
| H <sub>1</sub> | 4 mm    | Height (base)       |



Additional information

|                |                    |                               |
|----------------|--------------------|-------------------------------|
| f <sub>0</sub> | 13.8               | Calculation factor            |
|                | GEH62-BT           | Housing                       |
|                | GRG.RABR52/62-AH01 | Rubber interliner designation |
|                | RAE25-XL-NPP-B     | Bearing designation           |

Temperature range

|                  |        |                            |
|------------------|--------|----------------------------|
| T <sub>min</sub> | -20 °C | Operating temperature min. |
| T <sub>max</sub> | 120 °C | Operating temperature max. |