



- Vertical IDC punch down
- Integral Rear Cable Management
- 25 Year System Warranty

**Product Description**

The Cat6 FTP EcoBand Panel presents 24 Cat6 RJ45 ports in 1U of space with vertical IDC punch down for ease of termination. The robust body of the panel provides integrated rear cable management with a range of cable fixing locations.

The metal lid provides additional shielding over the terminations guaranteeing the high performance demanded from a shielded system

Each individual port is screen printed for easy identification with space for end user labelling.

Each panel comes supplied with Rack Snaps as standard.

**Features and Benefits**

- Vertical IDC punch down presentation
- Shielded System for increased performance
- Cost effective solution
- Exceeds all ISO/IEC 11801 and ANSI/TIA/EIA 568-C.2 Cat6 performance standards
- Manufactured to exacting ISO 9001 quality standards
- Built in rear cable management
- High density 24 ports in 1U
- Write on label strip
- Accepts Krone style punch down tools
- 568A or 568B wiring options
- RoHS compliant - lead free
- Backward compatible with Cat5E, Cat5 and voice

Product Description	Ordering Code	UNS Number
EcoBand Panel – Cat6 FTP	NGM2408IDC S6	853-335104

### Technical Description

The Cat6 FTP EcoBand Panel presents 24 Cat6 RJ45 ports in 1U of space and comes with cable management as standard with each individual port being screen printed for easy identification.

Tested to exceed all ISO/IEC 11801 and ANSI/TIA/EIA 568-C.2 Cat6 performance standards.

### Dimensions and Product Construction Specification

Ordering Code	Height	Width	Depth	Weight (Approx)
<b>NGM2408IDC S6</b>	44.00mm	482.50mm	132.00mm	1.62kg

- Jack life min. 1000 insertions
- Wire gauge 22-26 AWG
- Insertion loss <0.1dB 1-100MHz worst pair
- Maximum thickness of wire and insulation 1.44mm dia.
- Max. of two wires per contact (same gauge)
- IDC life up to 50 re-terminations

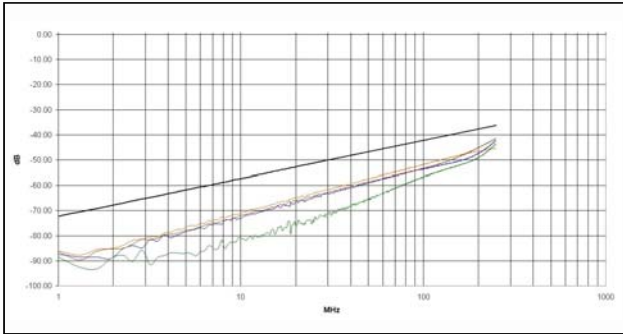
### Applications Supported

The Cat6 FTP EcoBand panel is designed to support any data or voice protocol that is capable offering over a Cat6 cabling system and is backward compatible with existing Cat5E, Cat5 and voice network infrastructure.

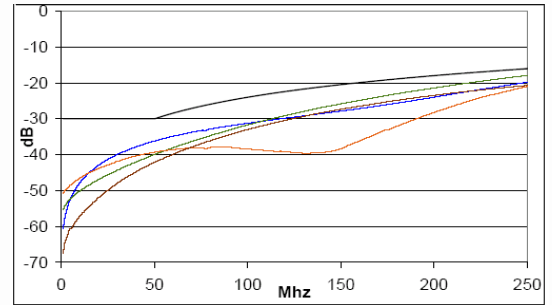
**Connecting Hardware Test  
(Patch Panel only)**

Tested from: 1 MHz  
 Tested to: 250 MHz  
 Standard: ISO/IEC 11801 and ANSI/TIA/EIA 568-C.2  
 Limits: Cat6 - Connector

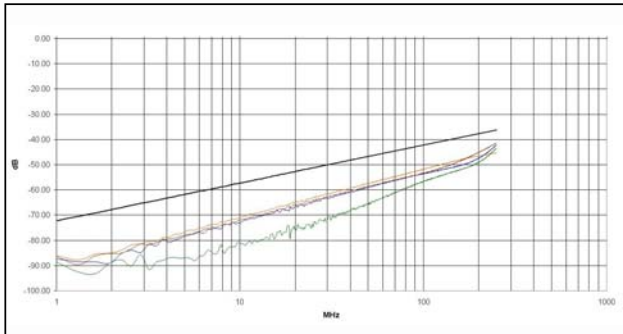
Power SUM NEXT



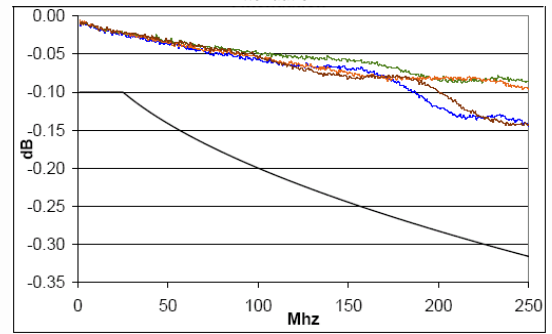
Return Loss



Power SUM FEXT



Attenuation

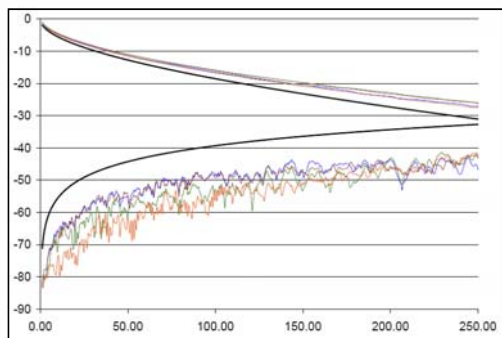


**Channel Test**

**(Cable, Patch Panel, Outlet & Transition Point)**

Tested from: 1 MHz  
 Tested to: 250 MHz  
 Standard: ISO/IEC 11801 and ANSI/TIA/EIA 568-C.2  
 Limits: Cat6 - Channel

Channel PS NEXT & Attenuation



Channel Return Loss

