

Modular Electric Actuators OSP-E

ORIGA SYSTEM PLUS

aerospace
climate control
electromechanical
filtration
fluid & gas handling
hydraulics
pneumatics
process control
sealing & shielding



ENGINEERING YOUR SUCCESS.

Coupling Housing Motor Flange Motor Coupling

Size 25, 32, 50



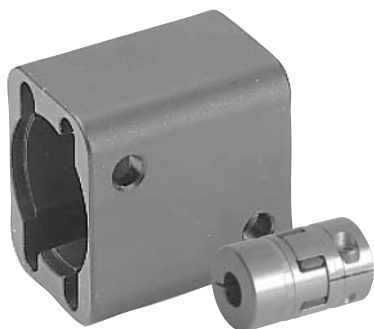
- **OSP-E..B**
Belt actuator with internal plain bearing guide

The coupling housing with suitable motor flange allows easy and inherently stable connection of the gear or the motor to the actuator.

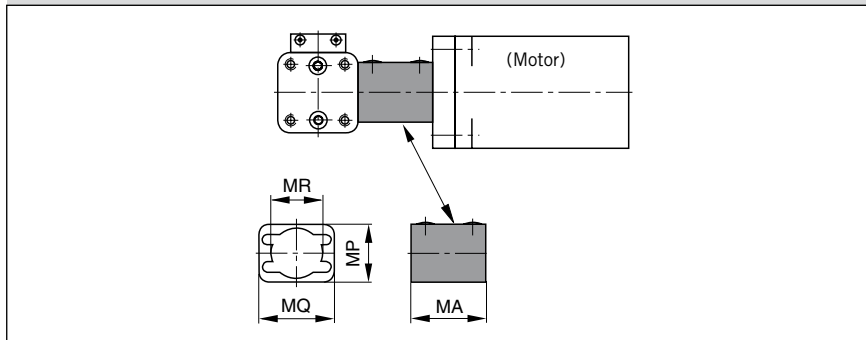
Hint:

Let us know the mounting dimensions of your motor. Upon request we will be pleased to check and manufacture a motor flange that will come up to your individual needs.

(Also see "motor flange for freely selectable mounting dimensions" page 126 ff)



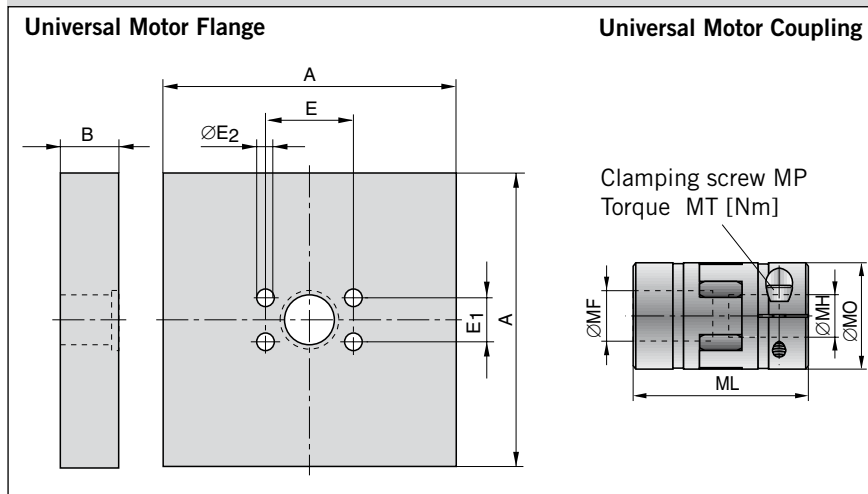
Coupling Housing (for gear or motor mounting)



Dimension Table [mm] and Order Instructions

Series	Typ	MA	MP	MQ	MR	Order No.
OSP-E25B	250	47	30	40	25	20606
OSP-E32B	320	49	38	49	33	20607
OSP-E50B	500	76	54	65	48	20608

Universal Motor Flange and Motor Coupling



Dimension Table [mm] and Order Instructions

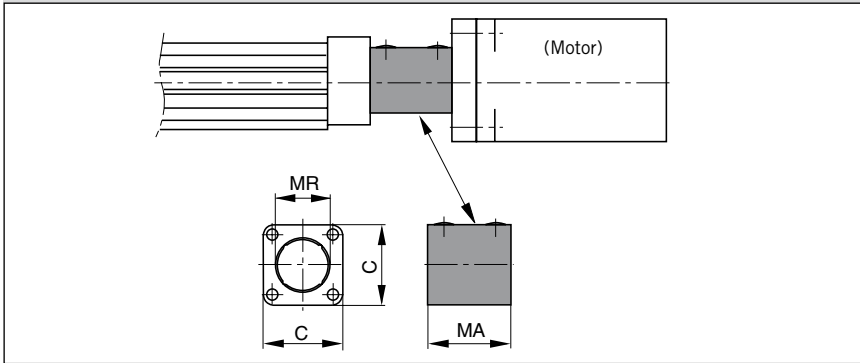
Series	Description	A	B	E	E ₁	E ₂	Order-No.
OSP-E25B	Motor flange semi-finished	100	20	30	15	5.5	12050
OSP-E25B	Motor flange PV040	∅ 80	15	30	15	5.5	16076
OSP-E32B	Motor flange semi-finished	100	20	38	18	6.6	12053
OSP-E32B	Motor flange PV040	∅ 80	15	38	18	6.6	16090
OSP-E50B	Motor flange semi-finished	120	15	50	32	9.0	12056
OSP-E50B	Motor flange PV060	□ 80	22	50	32	9.0	16057

Dimension Table [mm] and Order Instructions for Universal Motor Coupling

Series	MF ^{H7}	ML	MH ^{H7} *	MO	MT [Nm]	Order No.
OSP-E25B	10	30	4	20	0.76	15231
OSP-E32B	10	35	6	30	1.34	15197
OSP-E50B	16	66	9.5	40	10.5	10845

* can be bored out to motor shaft diameter by customer.
Other dimensions on request

Coupling Housing (for motor)

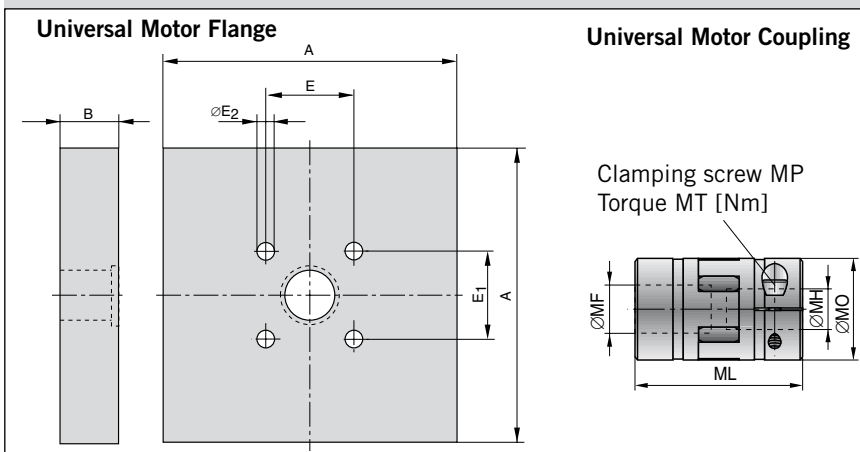


Dimension Table [mm] and Order Instructions

Series	Typ	MA	C	MR	Order No.
OSP-E25*	251	38	41	25	20137
OSP-E32*	321	54	52	33	20138
OSP-E50*	501	84	87	48	20139

* ..SB, ..ST, ..SBR, ..STR

Universal Motor Flange and Motor Coupling



Dimension Table [mm] and Order Instructions

Series	Description	A	B	E	E ₁	E ₂	Order-No.
OSP-E25B	Motor flange semi-finished	100	20	27	27	5.5	
OSP-E25B	Motor flange PV040	∅ 80	15	27	27	5.5	16058
OSP-E32B	Motor flange semi-finished	100	20	36	36	6.6	
OSP-E32B	Motor flange PV040	∅ 80	15	36	36	6.6	16070
OSP-E50B	Motor flange semi-finished	120	15	46	46	9.0	
OSP-E50B	Motor flange PV060	∅ 80	19,5	46	46	6.6	15526

Dimension Table [mm] and Order Instructions for Universal Motor Coupling

Series	MF ^{H7}	ML	MH ^{H7} **	MO	MT [Nm]	Order No.
OSP-E25*	6	30	6	20	0.76	12073
OSP-E32*	10	35	6	30	1.34	15197
OSP-E50*	15	66	9.5	40	10.5	12079

* ..SB, ..ST, ..SBR, ..STR

** can be bored out to motor shaft diameter by customer. Other dimensions on request.

Coupling Housing Motor Flange Motor Coupling

Size 25, 32, 50



- **OSP-E..SB**
Ball screw actuator with internal plain bearing guide
- **OSP-E..ST**
Trapezoidal screw actuator with internal plain bearing guide
- **OSP-E..SBR**
Ball screw actuator with internal plain bearing guide and piston rod
- **OSP-E..STR**
Trapezoidal screw actuator with internal plain bearing guide and piston rod

The coupling housing with suitable motor flange allows easy and inherently stable connection of the gear or the motor to the actuator.

Hint:

Let us know the mounting dimensions of your motor. Upon request we will be pleased to check and manufacture a motor flange that will come up to your individual needs.

(Also see "configurable motor flange" page 128)



Motor Flange

for freely selectable mounting dimensions

Size 25, 32, 50



- **OSP-E..B**
Ball actuator with internal plain bearing guide
- **OSP-E..SB**
Ball screw actuator with internal plain bearing guide
- **OSP-E..ST**
Trapezoidal screw actuator with internal plain bearing guide
- **OSP-E..SBR**
Ball screw actuator with internal plain bearing guide and piston rod
- **OSP-E..STR**
Trapezoidal screw actuator with internal plain bearing guide and piston rod

The motor flange for motors with freely selectable mounting dimensions offers flexible possibilities to connect most different types of motors to the electric actuators OSP-E. The drive shafts of actuator and motor are connected with a motor coupling in the coupling housing and the motor flange is centred.

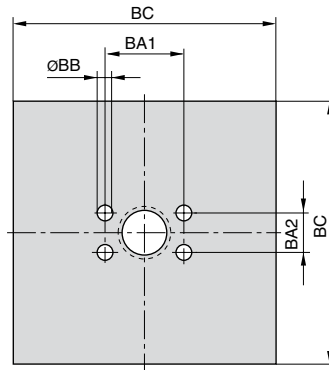
Hint

Please check the following data for the connection of the motor to the freely selectable motor flange and state when ordering:

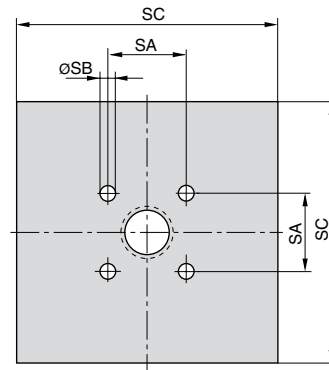
1. mounting angle W of the motor
2. bore hole version B as thread M or counterbore S
3. pitch circle diameter A as a function of M or S
4. Diameter of centring spigot D
5. Length of motor shaft G

Flange version

Belt drive



Screw drive

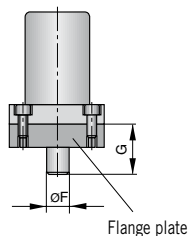


Dimension Table [mm] and Order Instructions

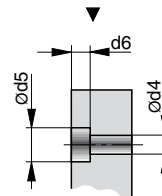
Size	BA1	BA2	ØBB	BC	SA	ØSB	SC	Order No.
25	30	15	5.5	100	27	5.5	100	18184
32	38	18	6.6	100	36	6.6	100	18184
50	50	32	9.0	120	46	6.6	120	18184

Variable Dimensions for Flange

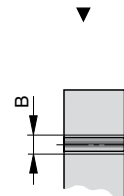
Version Thread „M“
Flange plate with thread,
Motor flange with through bolt



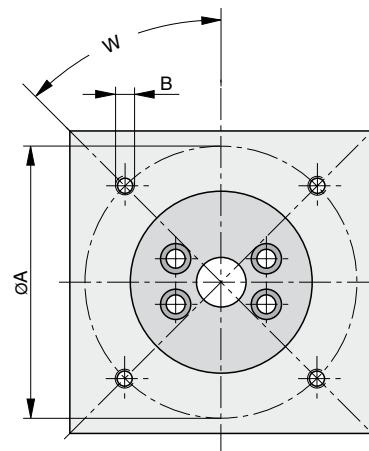
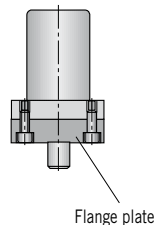
Version Counterbore „S“



Version Thread „M“



Version Counterbore „S“
Flange plate with through bore
Motor flange with thread



Counterbore Dimensions [mm]

Scrw. Size B	Ø d4	Ø d5	d6
M4x16	4.5	8	4.6
M5x22	5.5	10	5.7
M6x20	6.6	11	6.8
M8x25	9	15	9
M10x25	11	18	11

