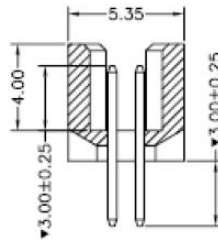
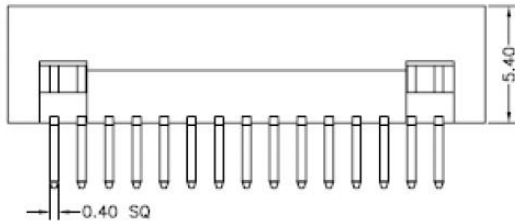
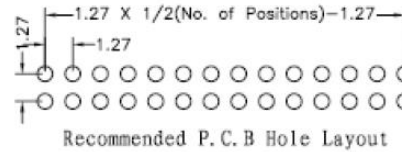
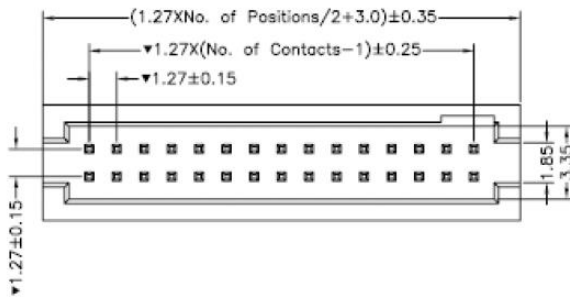




Datasheet

RS Pro 1.27mm Box Headers – Straight Pin Type

RS Stock No: 121-6536



Technical Data:

Material

- Contact: Brass
- Insulator: Polyester UL94V-0
PA6T +30%GF

Electrical

- Current Rating: 1.0A max.
- Contact Resistance: $\leq 20 \text{ m}\Omega$
- Insulation Resistance: $\geq 1000 \text{ M}\Omega$ at $V=100 \text{ V}$
- Withstanding Voltage: 3000V AC/minute

Mechanical

- Operating Temperature: -55°C to $+105^\circ \text{C}$
- Retention Force: 0.8KgF
- Soldering Temperature: $+260^\circ \text{C}$, 10s max.