



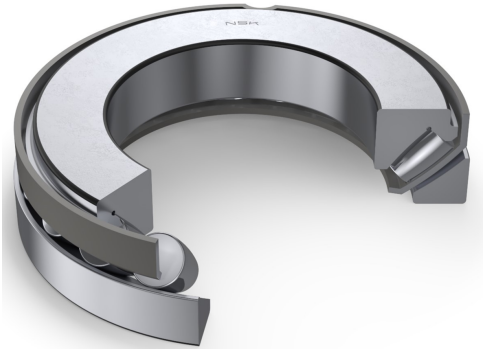
# PRODUCT DATASHEET

Datasheet creation date: 2025/06/02 8:51 (UTC)



## 29328E

### Thrust Spherical Roller Bearings



#### Boundary Dimensions

d	140	mm	Bore diameter
D	240	mm	Outside diameter
T,T3	60	mm	Height
r (min.)	2.1	mm	Chamfer dimension

#### Basic Load Ratings

Ca	840000	N	Basic dynamic load rating
C0a	2810000	N	Basic static load rating

#### Speeds

Oil (Oil-bath)	1400	min-1	Oil-bath lubrication
----------------	------	-------	----------------------

#### Dimensions

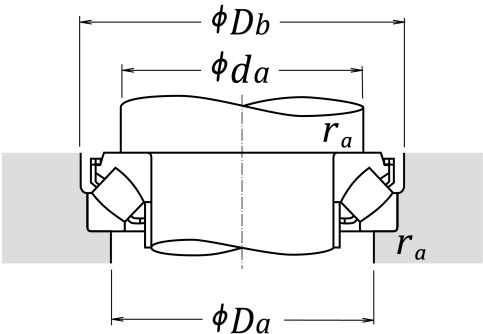
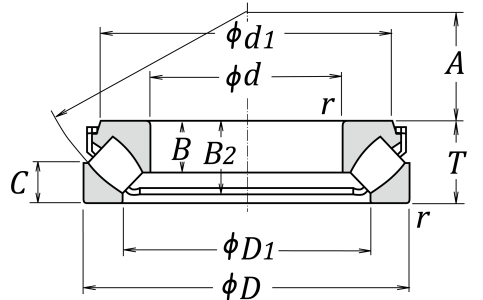
B2	54	mm	Height shaft washer + cage
d1	216.5	mm	Outside diameter of shaft washer end side face
B1	38.5	mm	Width shaft washer or length of shaft washer bore diameter that fits on shaft
C	30	mm	Height housing washer
A	82	mm	Distance from shaft washer end side face to pressure point
D1	179	mm	Shoulder diameter outer ring
ds1 (max.)	148	mm	Abutment diameter spacer ring
ds2 (max.)	154	mm	Abutment diameter spacer ring (E design)

#### Abutment and Fillet Dimensions

Da (max.)	205	mm	Diameter of housing abutment
Db (max.)	244	mm	Abutment diameter housing (E design)
ra (max.)	2	mm	Radius of shaft or housing fillet
da (min.)	185	mm	Abutment diameter spacer ring (E design)

#### Mass

Mass approx.	10.4	kg	Mass approx.
--------------	------	----	--------------





# PRODUCT DATASHEET

Datasheet creation date: 2025/06/02 8:51 (UTC)

