

PRODUCT DETAILS

ARTICLE: [22236FRFD](#)



WHEEL N 150X40/50 RB BOLT HOLE F.14 FORK M22 + BRAKE

Wheel series N

Wheels with injected polyurethane coating 58 Sh.D on polyamide 6 center. Available with standard shielded or stainless steel sealed precision ball bearings; standard or stainless steel roller bearings; plain bore.

Wheel fitted with standard roller bearing.

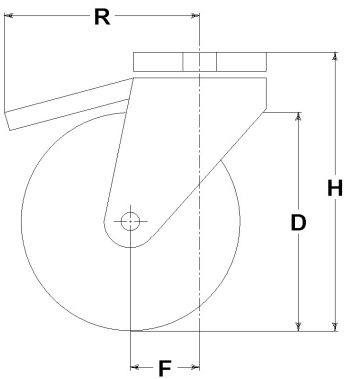


Castor series M22

M22 series, Medium-light pressed steel fork assemblies; swivel version has double ball raceways. Zincplated.

Trailing foot brake - total stop.

Single bolt hole fixing for bolt diam. 12-14 mm.



Technical data

Wheel diameter	D	150 mm
Tyre width	E	40,0 mm
Bore diameter	d	20 mm
Weight article		1,530 kg
Hub width	L	50 mm
Overall height	H	181 mm
Fixing bolt diameter	g	M12-14
Offset	F	51 mm
Fork width	U	50 mm
Load Capacity		200 kg

Related Articles

- Spare part wheel: [9046](#)
- Basic version: [22236FD](#)
- Version with thread-guards: [22236PPFD](#)
- Version with footguard: [22236PPFD](#)
- Version with trailing brake and thread-guards: [22236FRPPFD](#)
- Version with trailing brake and footguard: [22236FRPPFD](#)

GENERAL INFORMATION / RECOMMENDATIONS AND WARNINGS

The cited text and the complete catalogue in their most up-dated versions are available in the OEM's website page www.lagspa.it/downloads. The dimensions, descriptions, specifications and illustrations herein are indicative and subject to variations without notice. The fact that products are illustrated herein does not necessarily imply they are available from stock nor does it place us under any obligation to supply them.

Tests carried out refer to the original products with original accessories: the replacement of one of the components with others of different manufacture might prevent the same results from being achieved and will automatically invalidate any guarantee. Please contact our technical service concerning any special application.