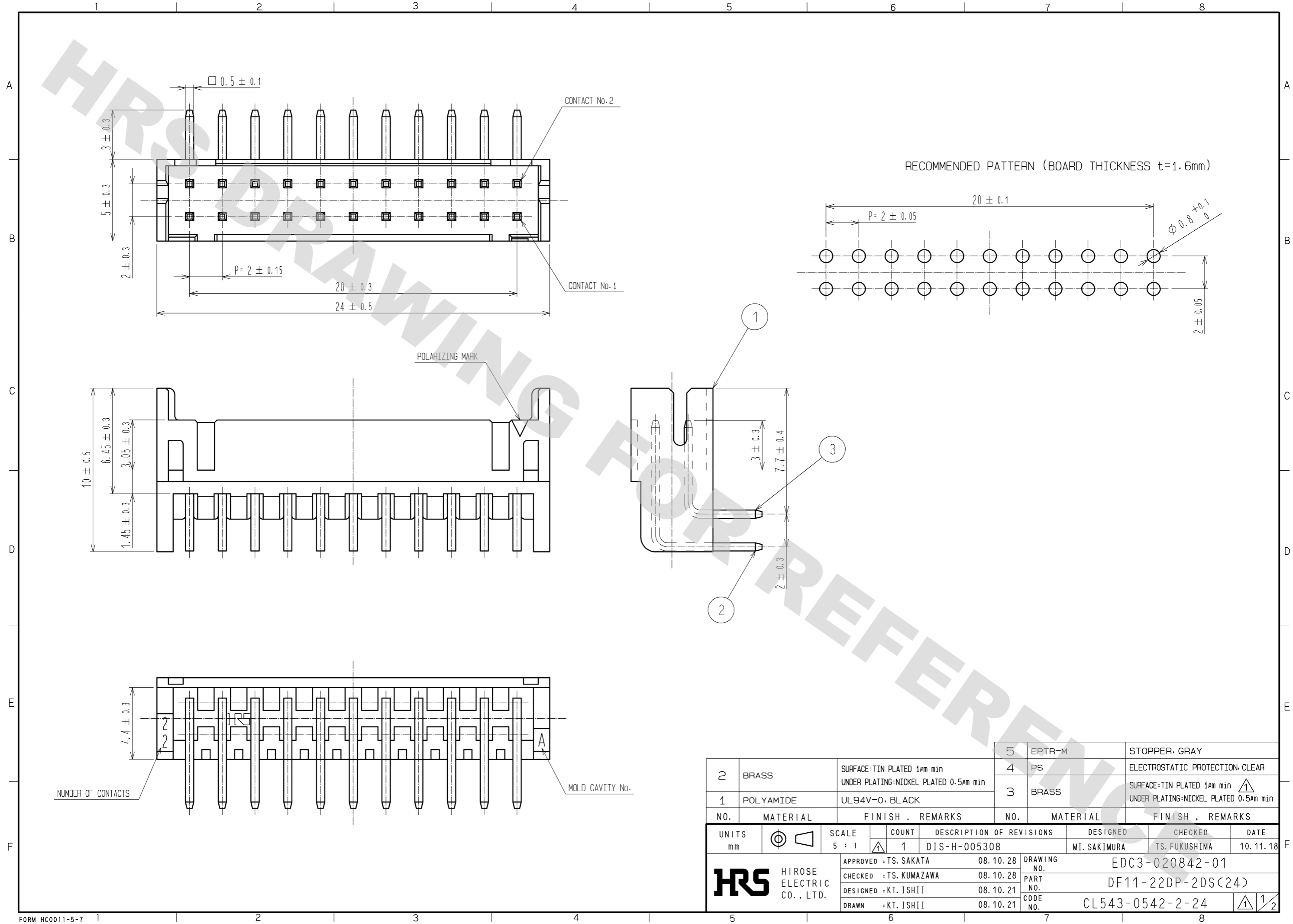
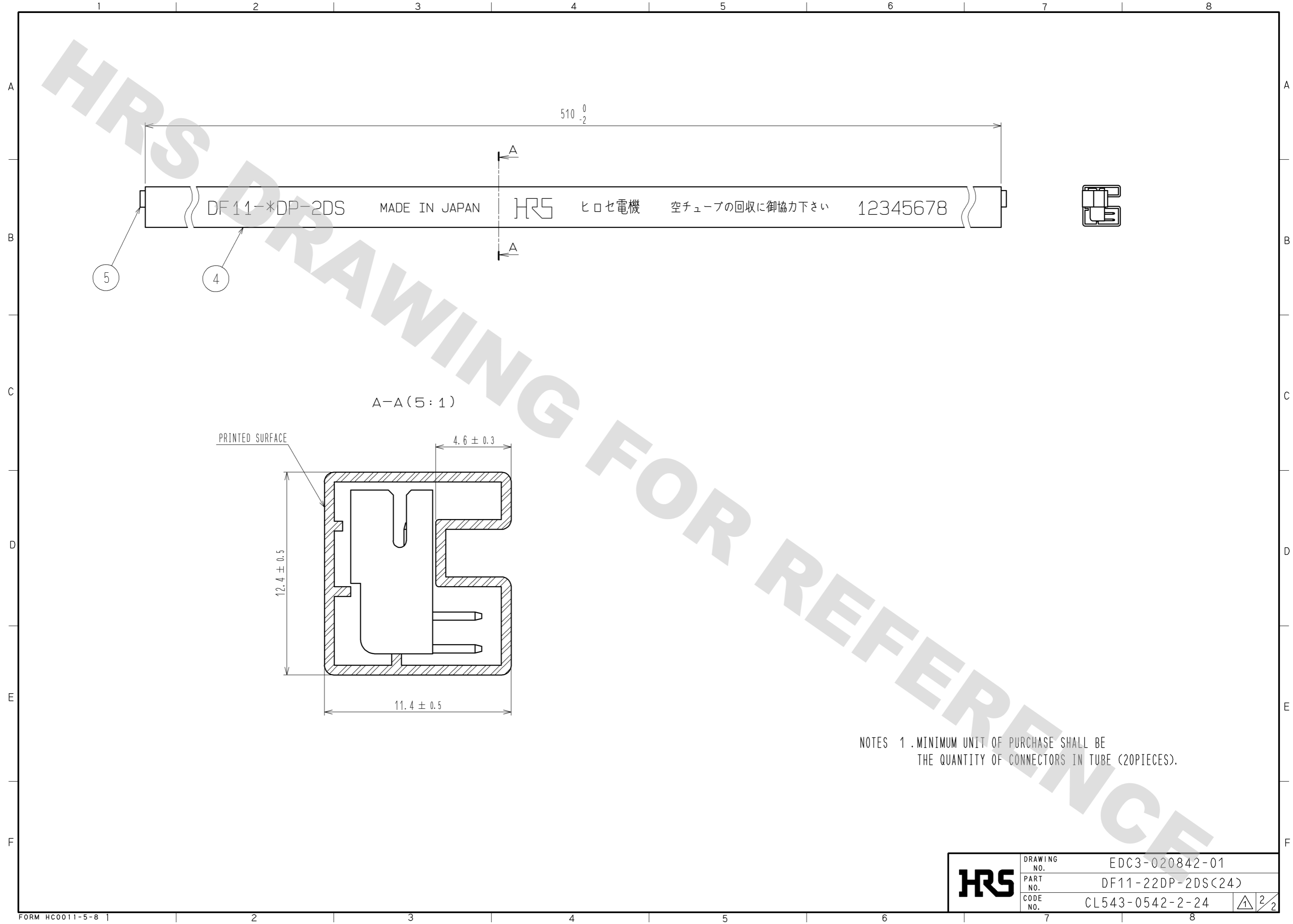


DRAWING FOR REFERENCE: This is subject to change without notice
08/11/2012



2	BRASS	SURFACE:TIN PLATED 1μm min UNDER PLATING:NICKEL PLATED 0.5μm min	5	EPTR-M	STOPPER: GRAY
1	POLYAMIDE	UL94V-0: BLACK	4	PS	ELECTROSTATIC PROTECTION: CLEAR
			3	BRASS	SURFACE:TIN PLATED 1μm min UNDER PLATING:NICKEL PLATED 0.5μm min
NO.	MATERIAL	FINISH . REMARKS	NO.	MATERIAL	FINISH . REMARKS
UNITS	mm	SCALE	5 : 1	COUNT	1
DESCRIPTION OF REVISIONS			DESIGNED	MI. SAKIMURA	CHECKED
DIS-H-005308			DATE	10.11.18	
APPROVED : TS. SAKATA			08.10.28	DRAWING NO. EDC3-020842-01	
CHECKED : TS. KUMAZAWA			08.10.28	PART NO. DF11-22DP-2DS(24)	
DESIGNED : KT. ISHII			08.10.21	CODE NO. CL543-0542-2-24	
DRAWN : KT. ISHII			08.10.21	1/2	

DRAWING FOR REFERENCE: This is subject to change without notice
08/11/2012



NOTES 1. MINIMUM UNIT OF PURCHASE SHALL BE THE QUANTITY OF CONNECTORS IN TUBE (20PIECES).

HRS	DRAWING NO.	EDC3-020842-01
	PART NO.	DF11-22DP-2DS(24)
	CODE NO.	CL543-0542-2-24

2/2