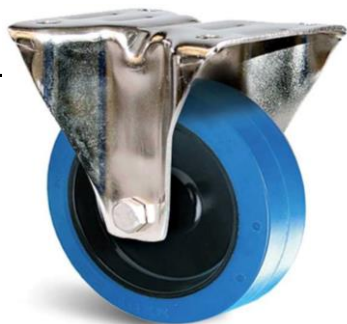


## Description

STAINLESS STEEL TOP PLATE CASTOR, BLUE ELASTIC RUBBER 125MM

### Fixed

KF41BA125-571RX



### Part Number

#### Swivel

KP41BA125-571RX

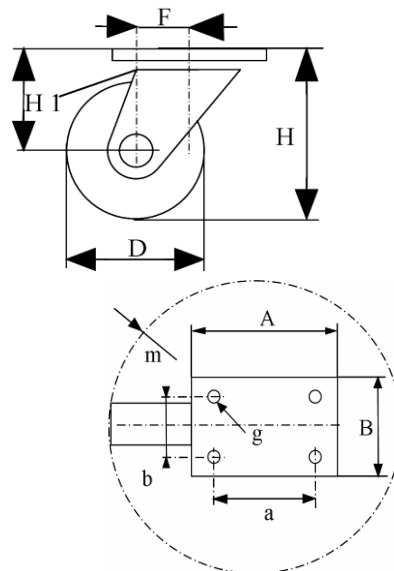


#### Swivel and brake

KP41BD125-571RX



	Fixed	Swivel	Swivel+brake
Wheel Diameter ØD	125 mm		
Overall Height H	155 mm ±1		
Size of plate A X B	105 x 85 mm±1		
Plate hole centres a x b	80 x 60 mm±0,3		
Plate hole	9 mm		
Offset F ±1	\	38 mm	38 mm
Width of Tread	32 mm±0,5		
Hardness of tread	shore A ± 70°		
Load capacity	200 Kg		
Weight	0,7 kg	0,85 kg	1,1 kg
Temperature	- 20 / + 60 °C		



### Castor Assembly :

Pressed stainless steel -AISI 304-. Swivel on two rows of balls.  
Fastening by top plate.  
Total lock. Metal pedal.

### Wheel :

Wheel centre made of Black Polyamide.  
Tread : Solid, Blue bonded elastic Rubber. Non marking.  
Hub : Stainless steel roller bearing.

### Features :

Low starting effort. High load capacity.  
Smooth and quiet handling on all types of floors.  
Absorbs shocks and vibrations. Resistant to wear.  
100% anti-corrosion. Easy to clean. Specially designed for humid environments.  
Suited for Food industry, Hospital or Industrial Kitchen equipment.  
Non staining blue rubber.  
Medium duty.