



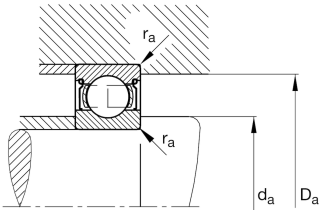
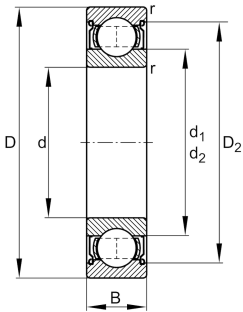
FAG

6212-Z-C3 [🔗](#)

Deep groove ball bearing

Deep groove ball bearing 62...-Z, single row, shield , steel sheet metal cage

Technical information



Your current product variant

Sealing	Z	Non-contact shield on one Side
Cage	JN	Steel sheet metal
Tolerance class	PN	Normal (PN)
Dimensional / heat stabilization	S0	Rings dimensional stabilized up to 150°
Lubricant	Without	Bearing not greased
Radial internal clearance	C3 (Group 3)	Internal clearance larger than CN
Bore type	Z	Cylindrical

Main Dimensions & Performance Data

d	60 mm	Bore diameter
D	110 mm	Outside diameter
B	22 mm	Width
C _r	57,000 N	Basic dynamic load rating, radial
C _{0r}	36,500 N	Basic static load rating, radial
C _{ur}	2,550 N	Fatigue load limit, radial
n _G	9,300 1/min	Limiting speed
n _{gr}	6,800 1/min	Reference speed
≈m	0.765 kg	Weight



Mounting dimensions

$d_{a\ min}$	69 mm	Minimum diameter shaft shoulder
$D_{a\ max}$	101 mm	Maximum diameter of housing shoulder
$r_{a\ max}$	1.5 mm	Maximum fillet radius

Dimensions

$r_{\ min}$	1.5 mm	Minimum chamfer dimension
D_1	95.82 mm	Shoulder diameter outer ring
D_2	97.68 mm	Caliber diameter outer ring
d_1	75.75 mm	Shoulder diameter inner ring







Temperature range

$T_{\ min}$	-30 °C	Operating temperature min.
$T_{\ max}$	150 °C	Operating temperature max.

Calculation factors

f_0	14.5	Calculation factor
-------	------	--------------------

Characteristics

-  F_r Radial load
-  F_a Axial load in one direction
-  F_a Axial load in two directions
-  Grease Lubrication
-  Oil Lubrication
-  Sealed on one side