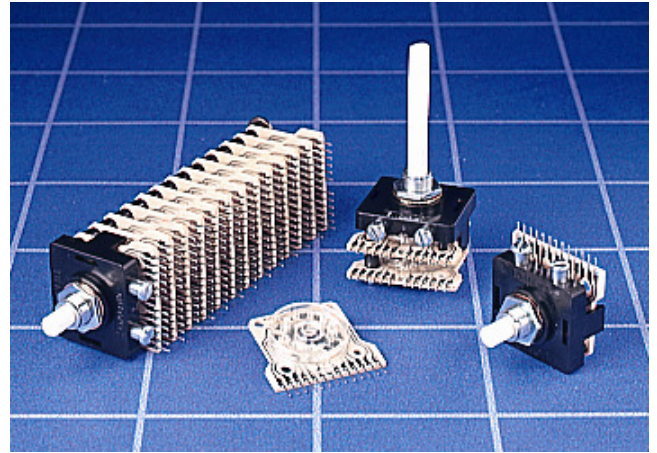


## GENERAL ELECTRICAL & MECHANICAL SPECIFICATION

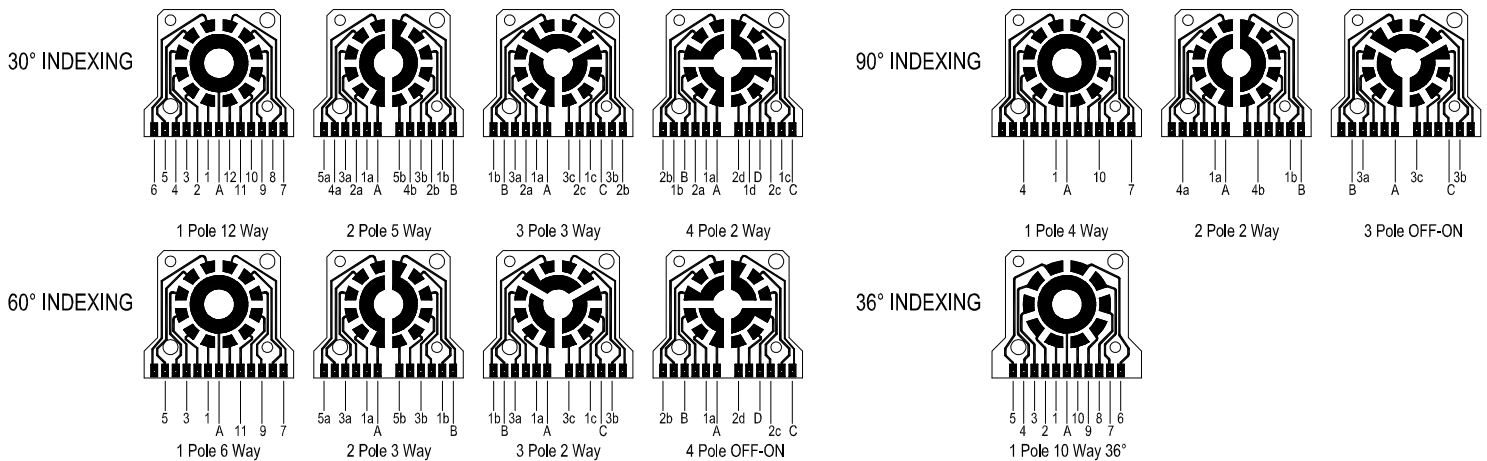
Switch Rating :	500mA @ 250Vac/dc resistive load
Life:	>10,000 Cycles
Operating Temperature:	-30°C to +85 °C
Proof Voltage:	1,000Vac (Initial)
Insulation Resistance:	>999 MΩ at 500Vdc (Initial)
Contact Resistance:	<50 mΩ (Initial)
Operating Torque (nominal)	Standard 5.6 cNm
End Stop Torque (minimum):	0.80 Nm
Wafer Circuit Board:	Epoxy Glass Fibre
Housing/Bush:	Polyamide 6.6 G.F. V0 Rated
Spindle:	Polyamide 6.6 G.F. V0 Rated
Moving Contact:	Phosphor Bronze Ag Plated
P/C Track:	Copper, Ag Plated
Terminals:	Brass, CZ108, Sn Plated
Contact Carrier:	Polycarbonate



## GENERAL FEATURES

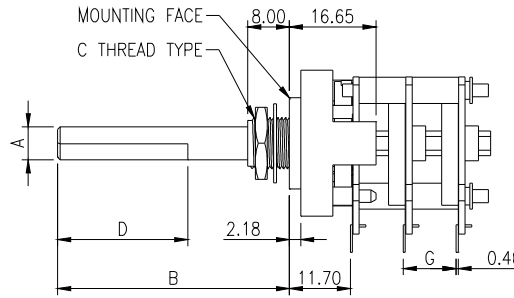
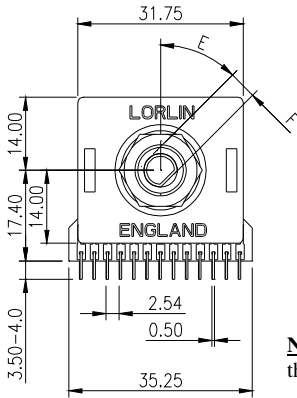
- Made in UK
- Multi wafer PCB switch.
- Standard 30° indexing
- P.C. Terminals on 2.54mm pitch
- Shorting MBB (only 30° indexing or Non Shorting BBM contacts
- Standard insulated spacers (6.35mm/7.63mm/10.16mm)
- **Special options:** 36°, 60° or 90° indexing, gold flashed or gold Plated contacts (2.5 microns gold over 2 microns silver over 2 microns nickel).
- Adjustable stop, base mounting with brass fixing bush, spindles with special flats non-standard wafer spacers.

## PC TERMINAL LAYOUTS VIEWED FROM KNOB END OF SPINDLE



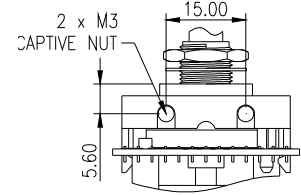
No. Of Poles	MAXIMUM NUMBER OF POSITIONS (WAYS) PER WAFER			
	30 ° Index	36 ° Index	60 ° Index	90 ° Index
1	12 No Stops	10	6	4
2	5	-	3	2
3	3	-	2	OFF-ON
4	2	-	OFF-ON	-

# PT ROTARY SWITCH



## BASE MOUNT OPTION

Base mounting option.  
Necessary spacers are supplied when this option is specified.



**Note: OPTIONAL SPINDLE FLAT SHOWN.** The Angle of the spindle flat is shown when the switch is set in the fully anti-clockwise position (ie position 1) viewed from the knob end on the spindle.

## TO SPECIFY PART NUMBERS FOR SINGLE WAFER SWITCHES

CIRCUITRY AT 30° INDEXING	STANDARD METRIC		STANDARD IMPERIAL	
	Shorting (MBB)	Non Shorting (BBM)	Shorting (MBB)	Non Shorting (BBM)
1 Pole 12 positions	PT6034	PT6003	PT6172	PT6015
1 Pole 12 Positions – No Stop	-	PT6002	-	PT6014
2 Pole 5 Positions	PT6035	PT6004	PT6474	PT6016
3 Pole 3 Positions	-	PT6005	-	PT6017
4 Pole 2 Positions	-	PT6006	-	PT6018
1 Pole 10 Positions (circuitry at 36° indexing)	-	PT6461	-	PT6462

## STANDARD DIMENSIONS

	A	B	C	D	E	F	G
	SPINDLE DIAMETER	SPINDLE LENGTH	BUSH THREAD	SPINDLE FLAT LTH	SPINDLE ANGLE	SPINDLE FLAT DP	SPACER LENGTH
IMPERIAL	6.35mm	50mm	9.52 x 32TPI	No Flat	-	(5.5mm)	-
METRIC	6.0mm	50mm	M10 x 0.75	No Flat	-	(5.0mm)	-

## ORDERING CODE FOR NON-STANDARD SWITCHES



BASE MOUNTING  
HARDWARE  
B = Fitted  
O = Not Required

Moulded Spacers  
Between Wafers  
B=6.35mm C=7.63mm  
D=10.16mm

Spindle  
Length(B) FMMF  
Full mm ≤50mm

No. of WAFERS			
A	1	M	11
B	2	N	12
C	3	P	13
D	4	R	14
E	5	S	15
F	6	T	16
G	7	U	17
H	8	V	18
K	9	W	19
L	10		

INDEX ANGLE & No of POLES		
A	30°	1 Pole
B		2
C		3
D		4
E	60°	1 Pole
F		2
G		3
H		4
I	90°	1 Pole
J		2
K		3
L	36°	1 Pole

No of WAYS (POSITIONS)	
A	2
B	3
C	4
D	5
E	6
F	7
G	8
H	9
I	10
J	11
K	12
L	OFF/ON

	CONTACT PLATING	
	MBB OR BBM	CONTACT PLATING
A	BBM	SILVER
B	MBB	PLATE
C	BBM	GOLD
D	MBB	PLATE
E	BBM	GOLD
F	MBB	FLASH

	Spindle Depth (mm)		Bush Ø (mm)
	Spindle Ø (mm)	Spindle Depth (mm)	
A	6.0	Nil	M10
B	6.0	5.0mm	M10
C	6.35	Nil	9.52
D	6.35	5.5	9.52

LENGTH OF SPINDLE FLAT (mm)		
A	3	N 16
B	4	P 17
C	5	Q 18
D	6	R 19
E	7	S 20
F	8	T 21
G	9	U 22
H	10	V 23
I	11	W 24
J	12	X No Flat
K	13	
L	14	Z Full Flat
M	15	

ANGLE OF FLAT		
A	0°	N 195°
B	15°	P 210°
C	30°	Q 225°
D	45°	R 240°
E	60°	S 255°
F	75°	T 270°
G	90°	U 285°
H	105°	V 300°
I	120°	W 315°
J	135°	X No Flat
K	150°	Y 330°
L	165°	Z 345°
M	180°	

Please send drawing if your requirements cannot be fulfilled by using the ordering code  
Special circuitry can be developed if required.