

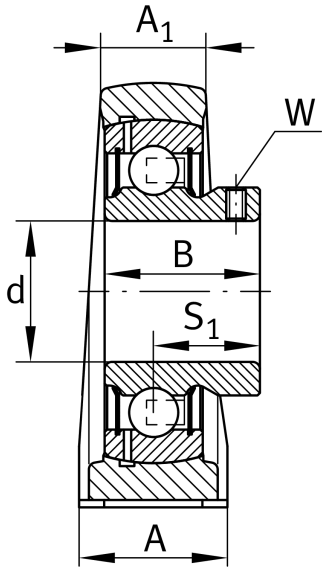
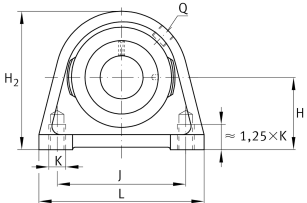
PSHEY20-XL-N

Plummer block housing unit

Plummer block housing units PSHEY, cast iron housing, radial insert ball bearing with grub screws in inner ring, P seals

X-life

Technical information



Your current product variant

Groove	N	Cast iron housing with undercut slot for end caps
Material	GG	Grey cast iron

Main Dimensions & Performance Data

d	20 mm	Bore diameter
L	65 mm	Length total
H 2	64 mm	Height
≈m	0.42 kg	Weight

Mounting dimensions

J	50.8 mm	Distance fixing bore
K	M8	Thread fixing bore

Dimensions

H	33.3 mm	Distance shaft axis
A	32 mm	Width (base)
A 1	19 mm	Width (head)
Q	M6	Connection thread for lubrication
S 1	18 mm	Distance of raceway to locking collar



Additional information

SHE04	Housing
GAY20-XL-NPP-B	Bearing designation
KASK04	Protecting cap

Temperature range

T <sub>min</sub>	-20 °C	Operating temperature min.
T <sub>max</sub>	120 °C	Operating temperature max.