

# Ring and Bushing Mounts



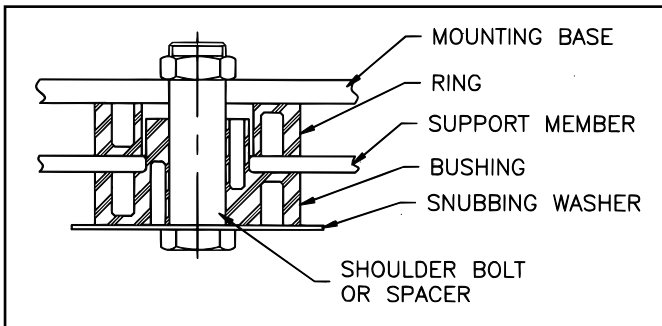
Neoprene Ring and Bushing Mounts are incorporated directly into the structural components of equipment such as office machines, motors and pumps, as well as air conditioning, electronic and scientific equipment. They offer fail-safe operation when installed in pairs.

Opposing holes in the elastomer provide excellent low-frequency isolation. The location of the holes cushions shock and isolates vibration parallel to the mount axis. The bushing's holes isolate vibration perpendicular to its axis.

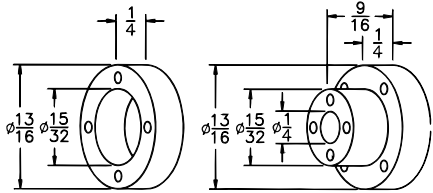
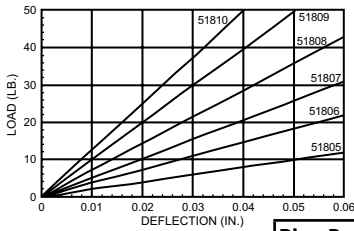
## Features

- Fail-Safe installation when proper snubbing washers and spacers are used
- Neoprene elastomer resistant to oil, fuel, and solvents
- Three sizes for loads ranging from 1 to 100 lbs.
- Operating temperature range of -20°F to 180°F

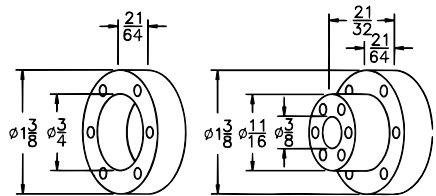
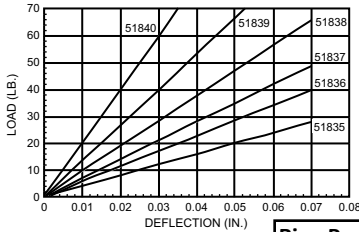
## Typical Mounting Application



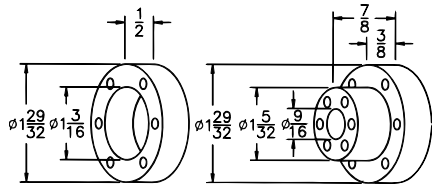
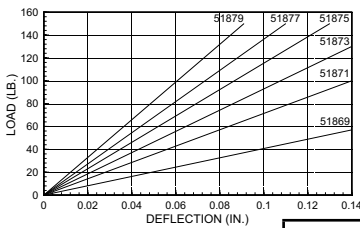
# Ring and Bushing Mounts



Ring Part No.	Bushing Part No.	Color Code	Max. Load (lbs.)
51805	51820	Silver	5
51806	51821	Yellow	10
51807	51822	Red	15
51808	51823	Green	20
51809	51824	Blue	25
51810	51825	White	30



Ring Part No.	Bushing Part No.	Color Code	Max. Load (lbs.)
51835	51850	Silver	20
51836	51851	Yellow	25
51837	51852	Red	35
51838	51853	Green	45
51839	51854	Blue	55
51840	51855	White	65



Ring Part No.	Bushing Part No.	Color Code	Max. Load (lbs.)
51869	51870	Silver	30
51871	51872	Yellow	40
51873	51874	Red	50
51875	51876	Green	65
51877	51878	Blue	85
51879	51880	White	100