

Actuator

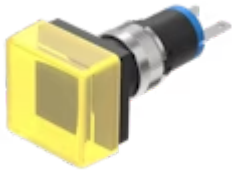
18-
080.0054L

Distribution by
Rs-online



<https://rs-online.eao.com/p/18-080.0054L>

Your product:



18-080.0054L Actuator

FRONT

Front dimension:	19 mm x 19 mm
Front form:	Square
Front bezel colour:	Black
Front bezel material:	Plastic

MOUNTING

Design:	Flush
Mounting type:	Panel mounting

OPERATING-/INDICATION PART

Lens colour:	Yellow
Lens material:	Plastic
Lens illumination:	Illuminated
Lens shape:	Flush
Lens optics:	translucent
Illumination colour:	White

ELECTRICAL CHARACTERISTICS

Operating voltage:	tbd
--------------------	-----

MECHANICAL CHARACTERISTIC

Terminal:	Soldering terminal
-----------	--------------------

Weight: 0.003 kg

AMBIENT CONDITION

Operating temperature: – 25 °C ... + 65 °C

CERTIFICATE

REACH: REACH compliant

RoHS: RoHS compliant

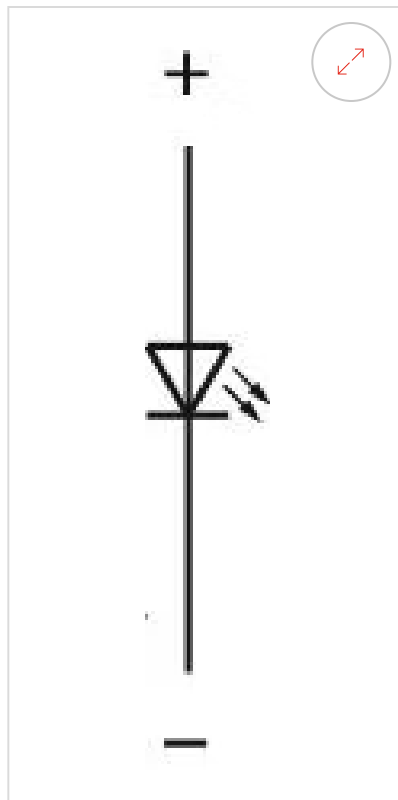
OTHER

Short Description: Actuator, 19 mm x 19 mm, Flush, Illuminated, Yellow, Plastic, translucent, Square, Black, Plastic, Soldering terminal, White

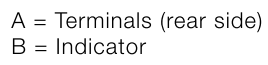
Dimension: 13.8 mm x 13.8 mm

Product attributes: Luminosity and wave length variations caused by LED manufacturing processes may cause slight differences regarding the illumination. The customer has to decide what resistor shall be used to the LED

Wiring diagrams:



Component layouts:



Technical drawing of a mechanical part showing two views: a front view and a top view.

Front View (Left):

- Overall width: 19 mm (19 x 19)
- Overall height: 19 mm (19 x 19)
- Central hole diameter: $\varnothing 16.2^{+0.2}_0$
- Fillet radius: R1.5 max.
- Dimension lines and tolerances are shown for the central hole and the overall dimensions.

Top View (Right):

- Overall diameter: 19 mm (19 x 19)
- Central hole diameter: $\varnothing 16.2^{+0.2}_0$
- Dimension lines and tolerances are shown for the central hole and the overall dimensions.

[illegible]