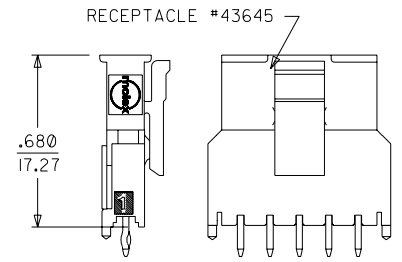
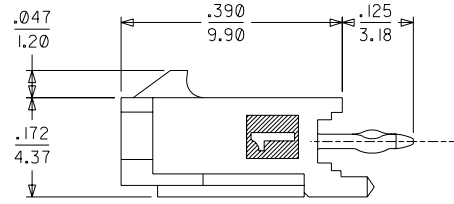
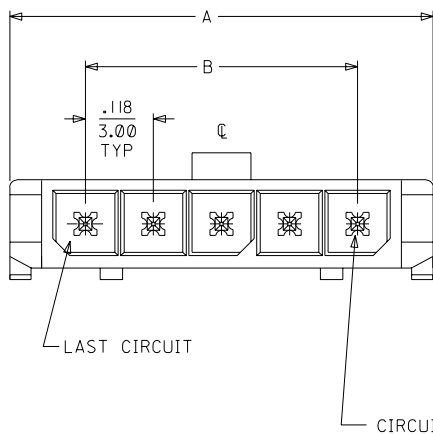


PCB LAYOUT: COMPONENT SIDE
RECOMMENDED PCB THICKNESS: .062/1.57



43650			
CKTS	A	B	C
2	.380	.118	.354
	9.65	3.00	9.00
3	.498	.236	.472
	12.65	6.00	12.00
4	.616	.354	.591
	15.65	9.00	15.00
5	.734	.472	.709
	18.64	12.00	18.00
6	.852	.591	.827
	21.64	15.00	21.00
7	.970	.709	.945
	24.64	18.00	24.00
8	1.088	.827	1.063
	27.64	21.00	27.00
9	1.206	.945	1.181
	30.63	24.00	30.00
10	1.325	1.063	1.299
	33.66	27.00	33.00
11	1.443	1.181	1.417
	36.65	30.00	36.00
12	1.561	1.299	1.535
	39.65	33.00	39.00

FINISH A		
CKTS	MATERIAL NO:	VOID CKT
02	43650-0215	
03	43650-0315	
04	43650-0415	
05	43650-0515	
06	43650-0615	
07	43650-0715	
08	43650-0815	
09	43650-0915	
10	43650-1015	
11	43650-1115	
12	43650-1215	
03	43650-0330	02
05	43650-9915	03

FINISH B		
CKTS	MATERIAL NO:	VOID CKT
02	43650-0216	
03	43650-0316	
04	43650-0416	
05	43650-0516	
06	43650-0616	
07	43650-0716	
08	43650-0816	
09	43650-0916	
10	43650-1016	
11	43650-1116	
12	43650-1216	

FINISH C		
CKTS	MATERIAL NO:	VOID CKT
02	43650-0217	
03	43650-0317	
04	43650-0417	
05	43650-0517	
06	43650-0617	
07	43650-0717	
08	43650-0817	
09	43650-0917	
10	43650-1017	
11	43650-1117	
12	43650-1217	
04	43650-0430	02,03

- NOTES:
- HOUSING MATERIAL: LIQUID CRYSTAL POLYMER, GLASS FILLED, UL94V-0, COLOR: BLACK
TERMINAL MATERIAL: BRASS ALLOY
 - FINISH:
A = .000100/(0.0025) MIN TIN/LEAD (90/10) OVER .000050/(0.0013) NICKEL PLATE.
B = .000015/(0.00038) MIN GOLD IN SELECTIVE AREA; .000050/(0.0013) MIN TIN/LEAD (90/10) ON SOLDER TAILS BOTH OVER .000050/(0.0013) NICKEL PLATE.
C = .000030/(0.00076) MIN GOLD IN SELECTIVE AREA; .000050/(0.0013) MIN TIN/LEAD (90/10) ON SOLDER TAILS BOTH OVER .000050/(0.0013) NICKEL PLATE.
 - PRODUCT SPECIFICATION: PS-43650
 - MATES WITH MICRO FIT (3.0) RECEPTACLE SERIES 43645
 - TRAY PACKAGED : SEE MOLEX DRAWING PK-70873-0811

ADD -0430 EC NO. UCP2003-2190 DRW: MUELLER 02/04/14 CHK: MUELLER 02/04/14 APPR: MARGULIS 02/04/14	DESCRIPTION CI	QUALITY SYMBOLS MAJOR = 0 CRITICAL = 0	GENERAL TOLERANCES: (UNLESS SPECIFIED)		SCALE :	DESIGN UNITS	THIRD ANGLE PROJECTION	DIMENSIONS:		SHT	REV
			mm	INCH	mm	INCH		mm	INCH	mm	INCH
DRAWN BY & DATE SAMIEC 00/07/07			CHECKED BY & DATE MUELLER 00/07/07			APPROVED BY & DATE EDGLEY 00/07/07			TITLE: MICRO-FIT (3.0) SINGLE ROW / VERTICAL THRU HOLE / PEGS / TRAY		
ANGULAR: ±1/2 °			CAD FILENAME			MATERIAL NO. SEE CHART			DRAWING NO. SD-43650-006		
DRAFT WHERE APPLICABLE MUST REMAIN WITHIN DIMENSIONS			THIS DRAWING CONTAINS INFORMATION THAT IS PROPRIETARY TO MOLEX INCORPORATED AND SHOULD NOT BE USED WITHOUT WRITTEN PERMISSION.			MOLEX MOLEX INCORPORATED			SHEET NO. 1 OF 1		