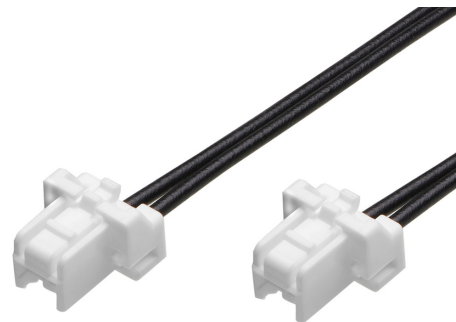




Part Number : [2219581024](#)
Product Description : CLIK-Mate-to-CLIK-Mate
Off-the-Shelf (OTS) Cable Assembly, 2.00mm
Pitch, Single Row, 600.00mm Length, 2
Circuits, White
Series Number : 221958
Status : Active
Product Category : Power and Signal Cable
Assemblies




Documents & Resources

Drawings
[2219581024_sd.pdf](#)

Product Environment Compliance

Compliance

GADSL/IMDS	Not Relevant
China RoHS	
EU ELV	Not Relevant
Low-Halogen Status	Not Low-Halogen per IEC 61249-2-21
REACH SVHC	Not Contained per D(2024)4144-DC (27 June 2024)
EU RoHS	Compliant per EU 2015/863

Multiple Part Product Compliance Statements

- Eu RoHS
- REACH SVHC
- Low-Halogen

Multiple Part Industry Compliance Documents

- IPC 1752A Class C
- IPC 1752A Class D
- Molex Product Compliance Declaration
- IEC-62474
- chemSHERPA (xml)

EU RoHS Certificate of Compliance

Part Details

General

Status	Active
Category	Power and Signal Cable Assemblies
Series	221958
Description	CLIK-Mate-to-CLIK-Mate Off-the-Shelf (OTS) Cable Assembly, 2.00mm Pitch, Single Row, 600.00mm Length, 2 Circuits, White
Application	Signal, Wire-to-Board
Assembly Configuration	Dual Ended Connectors
Connector to Connector	CLIK-Mate-to-CLIK-Mate
Product Family	CLIK-Mate Wire-to-Board Connectors
Product Name	CLIK-Mate
Type	Discrete Wire Assembly
UPC	196823307379

Electrical

Current - Maximum per Contact	3.0A
Voltage - Maximum	250V AC (RMS)/DC

Physical

Cable Length	600.00mm
Circuits (Loaded)	2
Circuits (maximum)	2
Color - Resin	White
Gender	Male-Male
Lock to Mating Part	Yes
Material - Metal	Copper Alloy
Material - Plating Mating	Tin
Material - Plating Termination	Tin
Material - Resin	PBT
Net Weight	5.853/g
Number of Rows	1
Overmolded	No

Packaging Type	Bag
Pitch - Mating Interface	2.00mm
Single Ended	No
Termination Interface Style	Crimp or Compression
Wire/Cable Type	UL 10002
Wire Insulation Diameter	1.22mm
Wire Size (AWG)	22

Mates With / Use With

Mates with Part(s)

Description	Part Number
2.00mm Pitch CLIK-Mate Vertical Single Row PCB Receptacles	<u>502443</u>
2.00mm Pitch CLIK-Mate Right-Angle Single Row PCB Receptacles	<u>502494</u>