

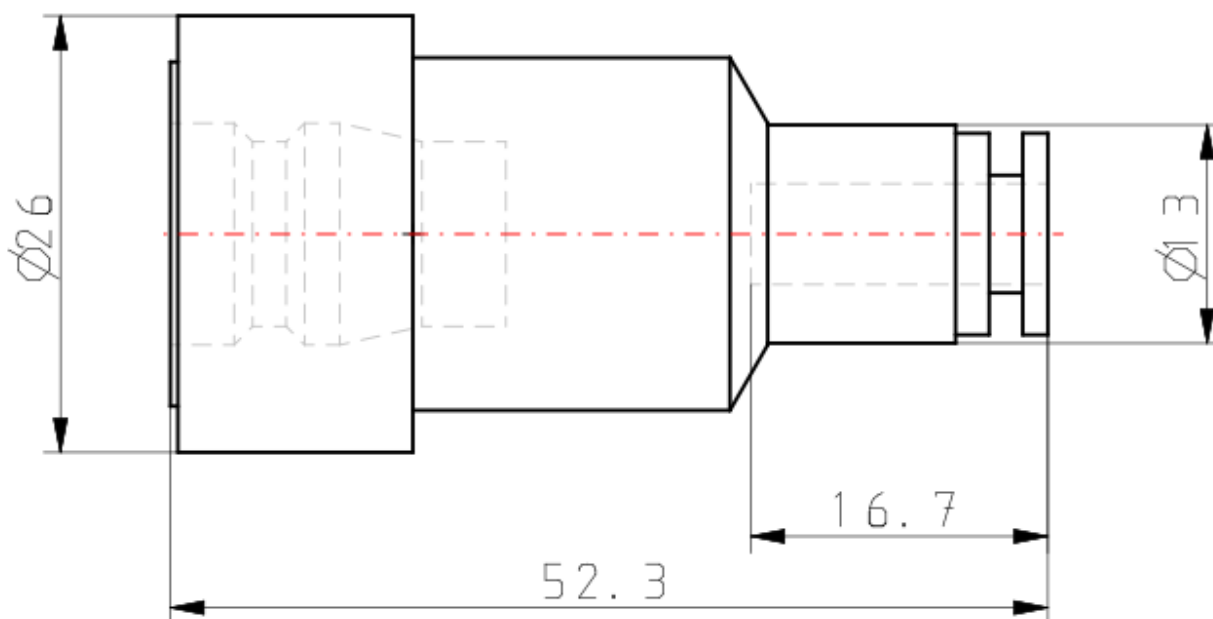
KK130S-*H, S-Couplers, Straight Type with One-touch Fitting KK130S-08H

Datasheet

- S coupler with Plug and Socket
- Energy saving and Cost reduction
- Plug insertion forced reduced by 22 %
- Compact and Lightweight reduced by 14 %
- Applicable tubing from Ø 6 to Ø 1/2
- Thread, sizes: R, Rc, NPT from 1/8 to 1/2
- One-touch fitting type is available as standard
- Sleeve lock mechanism is available.

Type	S (Socket)
Applicable Tubing O.D.	ø8 mm
Pressure medium	Air
Maximum operating pressure	1.5 MPa
Minimum operating pressure	0 MPa
Proof pressure	2 MPa
Maximum ambient temperature	80 °C
Minimum ambient temperature	-20 °C (No freezing)
Sealing principle	Male thread with sealant
Plating	Sleeve: Electroless nickel plated Other external metal parts: Zinc chromated
Weight	0.074 Kg

Dimensions



Additional information

Catalogue

[KK130-B_EU.pdf](#)