

# 1200M & 1200MR SERIES - MOMENTARY PUSHBUTTON SWITCHES



## FEATURES

- Single pole panel mounting models.
- NC & NO electrical functions with double break.
- Solder lug, screw and screw with clamp terminals.
- Chrome plated domed or flat metal actuators .

## SPECIFICATIONS

Contact ratings (resistive loads):	4 Amps at 250 VAC, 8 Amps at 125 VAC or 4 Amps at 24 VDC
Initial contact resistance:	10 milliohms max. at 1A 2VDC
Insulation resistance:	1000 megohms minimum at 500 VDC
Dielectric strength:	2000 V rms min. between terminals. 3000 V rms between terminals & frame
Electrical life:	10,000 cycles at full load
Operating temperature range:	-20°C to +55°C
Total travel:	NO: .177" (4.5mm) ± .011" (0.3mm)      NC: .137" (3.5mm) ± .011" (0.3mm)

## MATERIALS

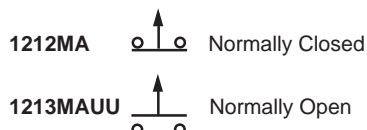
Contacts:	Silver
Actuator:	Chrome plated brass on polyamide base
Case:	Polyamide
Bushing:	Nickel plated brass
Hardware:	Supplied with 1 Hex Nut p/n U166 & 1 Panel Dress Nut U1868. See hardware section of catalog.

## AGENCY RECOGNITION



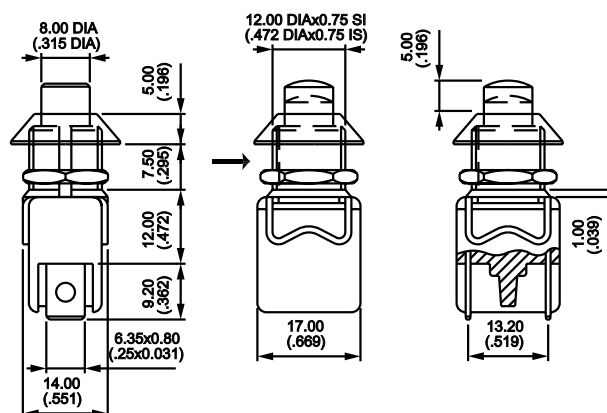
Model no's. with 'UU' are UL & CSA recognized.  
Marking: Switches are supplied with recognized marks.

## Solder lug/quick-connect terminals



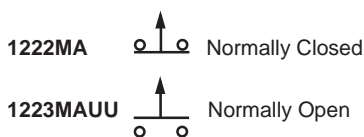
The 'M' in model no. indicates flat actuator.  
Substitute 'MR' for domed actuator, if desired.

→ Keyway



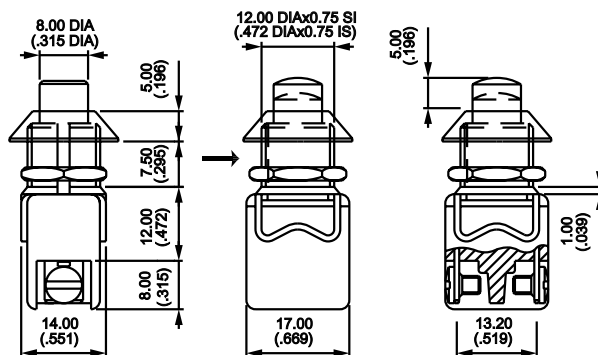
# 1200M & 1200MR SERIES - MOMENTARY PUSHBUTTON SWITCHES

## Screw terminals

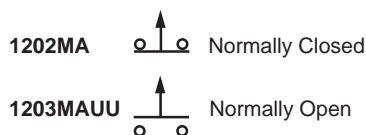


The 'M' in model no. indicates flat actuator.  
Substitute 'MR' for domed actuator, if desired.

→ Keyway

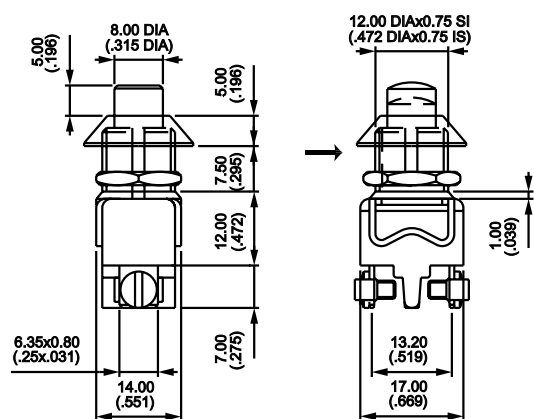


## Straight screw terminals and clamp



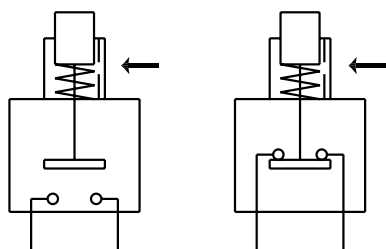
The 'M' in model no. indicates flat actuator.  
Substitute 'MR' for domed actuator, if desired.

→ Keyway

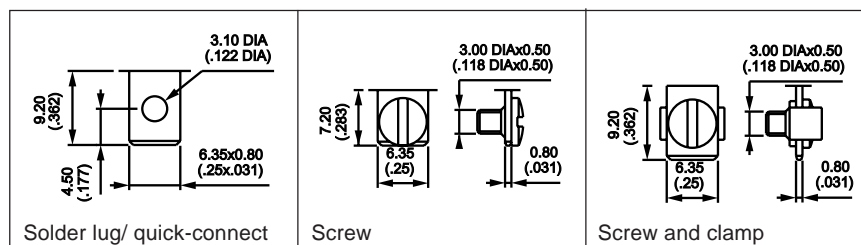


## SWITCH ACTION

Arrow indicates keyway

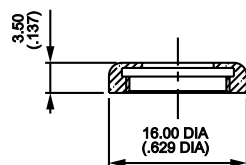


## TERMINALS



PANEL CUT-OUT: .480" (12.2mm) dia.

## SPECIAL CAP NUT



**U1874** Chrome plated cap nut, flat & plain  
May be ordered in place of panel dress nut.  
Order separately.