

TRANSVERSE AUX. SWITCH, 2S,  
 SPRING-L. CONNECTION,  
 FOR CIRCUIT-BREAKERS, SZ S00/S0

**General technical data:**

<b>Product brand name</b>		SIRIUS
<b>Product designation</b>		auxiliary switch, transverse on the front
<b>Design of the product</b>		transverse auxiliary switches
<b>Size of the circuit-breaker</b>		S00
<b>Protection class IP / frontal/front side</b>		IP20
<b>Ambient temperature</b>		
<ul style="list-style-type: none"> <li>during storage</li> </ul>	°C	-50 ... 80
<ul style="list-style-type: none"> <li>during the operating phase</li> </ul>	°C	-20 ... 60

**Auxiliary circuit:**

<b>Number of NC contacts / for auxiliary contacts</b>		
<ul style="list-style-type: none"> <li>instantaneous switching</li> </ul>		0
<b>Number of NO contacts / for auxiliary contacts</b>		
<ul style="list-style-type: none"> <li>instantaneous switching</li> </ul>		2
<b>Number of changeover contacts / of the auxiliary contacts</b>		
<ul style="list-style-type: none"> <li>non-delayed</li> </ul>		0
<b>Operating current / of the auxiliary contacts</b>		
<ul style="list-style-type: none"> <li>at AC-12                             <ul style="list-style-type: none"> <li>at 24 V</li> <li>at 230 V</li> <li>maximum</li> </ul> </li> <li>at AC-15                             <ul style="list-style-type: none"> <li>at 24 V</li> <li>at 230 V</li> </ul> </li> <li>at DC-13                             <ul style="list-style-type: none"> <li>at 24 V</li> <li>at 48 V</li> <li>at 60 V</li> </ul> </li> </ul>	A	2.5
	A	2.5
	A	10
	A	2
	A	0.5
	A	1
	A	0.3
	A	0.15

**Installation/mounting/dimensions:**

<b>Type of fixing/fixation</b>		plug-in fixing
<b>Width</b>	mm	45

<b>Height</b>	mm	13
<b>Depth</b>	mm	17

### Connections:

#### design of the electrical connection

- for auxiliary and control current circuit

spring-loaded terminals

#### Type of connectable conductor cross section

- for auxiliary contacts
  - solid
  - finely stranded
    - with wire end processing
    - without conductor final cutting
- for AWG conductors / for auxiliary contacts

2x (0.5 ... 1.5 mm<sup>2</sup>)

2x (0.5 ... 1.5 mm<sup>2</sup>)

2 x (0.5 ... 1.5 mm<sup>2</sup>)

2x (20 ... 14)

### Certificates/approvals:

#### verification of suitability

CE / UL / CSA / CCC

### Further information:

#### Information- and Downloadcenter (Catalogs, Brochures,...)

<http://www.siemens.com/industrial-controls/catalogs>

#### Global Industry Mall (Online ordering system)

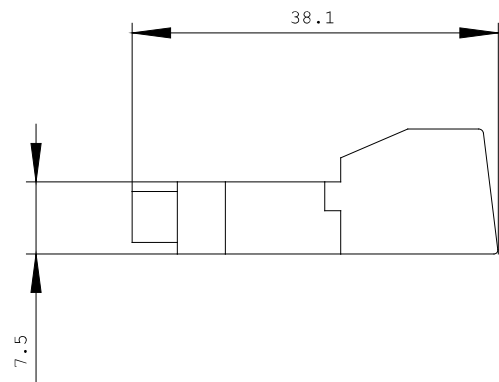
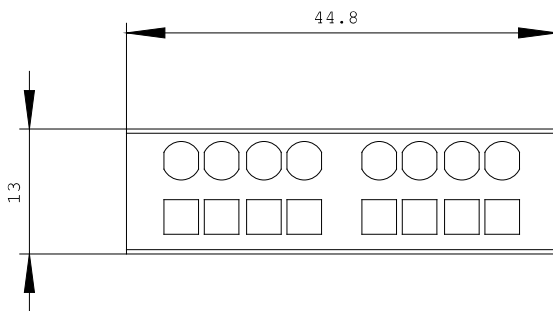
<http://www.siemens.com/industrial-controls/mall>

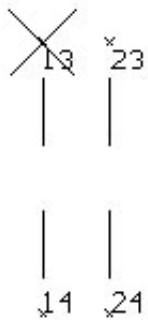
#### Service&Support (Manuals, Certificates, Characteristics, FAQs,...)

<http://support.automation.siemens.com/WW/view/en/3RV2901-2F/all>

#### Image database (product images, 2D dimension drawings, 3D models, device circuit diagrams, ...)

[http://www.automation.siemens.com/bilddb/cax\\_en.aspx?mlfb=3RV2901-2F](http://www.automation.siemens.com/bilddb/cax_en.aspx?mlfb=3RV2901-2F)





last change:

Apr 26, 2010