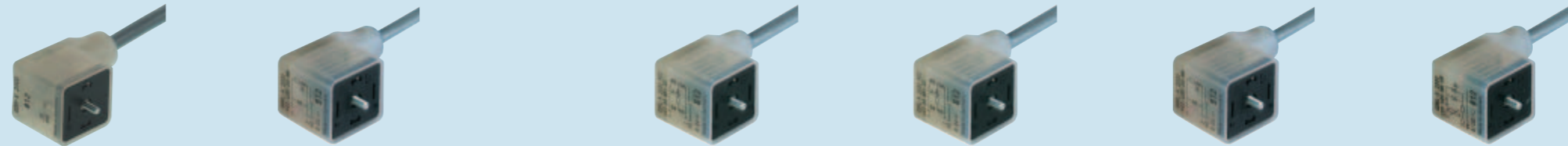


RECTANGULAR CONNECTORS

Molded cable socket



TYPE A EN 175301-803 (DIN 43650) / ISO 4400

Product description							
Description	cable socket with molded-onlead and central screw M 3, protective earth (PE) allows 0° and 180° assembly	cable socket with molded-onlead, function indicator (LED) with protective circuit (diode), protective earth (PE) allows 0° and 180° assembly		cable socket with molded-onlead, rectifier with function indicator (LED) and protective circuit (Z-diode), protective earth (PE) allows 0° and 180° assembly	cable socket with molded-onlead, rectifier with function indicator (LED) and protective circuit (Z-diode)	cable socket with molded-onlead, function indicator (LED) with protective circuit (diode)	cable socket with molded-onlead, function indicator (LED) with protective circuit (varistor)
Type	GDM-K 2000 PE2 PVC 075 2m schwarz/black	GDML-K 2000 PE2 LED 24 HH 2m schwarz/black		GDML-K 2000 PE2 LED 24 GB1 ZZ 2m schwarz/black	GDML-K 2000 LED 24 GB1 ZZ 2m schwarz/black	GDML-K 2000 LED 24 HH 2m schwarz/black	GDML-K 2000 LED 120 HH VR 2m schwarz/black
Order No.	933 655-111	933 413-111		933 656-111	933 105-111	933 106-111	933 108-111
Other standard types	transparent housing, coding plate black: cable length 5 m, Order no. 933 655-112; coding plate grey: cable length 2 m, Order no. 933 655-611; cable length 5 m, Order no. 933 655-612	transparent housing, coding plate black: cable length 5 m, Order no. 933 413-112; coding plate grey: cable length 2 m, Order no. 933 413-611; cable length 5 m, Order no. 933 413-612		transparent housing, coding plate black: cable length 5 m, Order no. 933 656-112; coding plate grey: cable length 2 m, Order no. 933 656-611; cable length 5 m, Order no. 933 656-612	transparent housing, coding plate black: cable length 5 m, Order no. 933 105-112; coding plate grey: cable length 2 m, Order no. 933 105-611; cable length 5 m, Order no. 933 105-612	transparent housing, coding plate black: cable length 5 m, Order no. 933 106-112; coding plate grey: cable length 2 m, Order no. 933 106-611; cable length 5 m, Order no. 933 106-612	transparent housing, coding plate black: cable length 5 m, Order no. 933 108-112; coding plate grey: cable length 2 m, Order no. 933 108-611; cable length 5 m, Order no. 933 108-612
Number of contacts	2 + PE / PE connected	2 + PE / PE connected		2 + PE / PE connected	2 + PE	2 + PE	2 + PE
Cable material	PVC	PVC		PVC	PVC	PVC	PVC
Cable length	2 m	2 m		2 m	2 m	2 m	2 m
Cable diameter	6.5 mm	6.5 mm		6.5 mm	6.5 mm	6.5 mm	6.5 mm
Conductor size	0.75 mm ²	0.75 mm ²		0.75 mm ²	0.75 mm ²	0.75 mm ²	0.75 mm ²
Cable specification	3 x 0.75 mm ² (PVC, grey)	3 x 0.75 mm ² (PVC, grey)		3 x 0.75 mm ² (PVC, grey)	3 x 0.75 mm ² (PVC, grey)	3 x 0.75 mm ² (PVC, grey)	3 x 0.75 mm ² (PVC, grey)
Cable type	following VDE 0281-5 / H03 VV-F	following VDE 0281-5 / H03 VV-F		following VDE 0281-5 / H03 VV-F	following VDE 0281-5 / H03 VV-F	following VDE 0281-5 / H03 VV-F	following VDE 0281-5 / H03 VV-F
Standard	DIN EN 175 301-803-A	DIN EN 175 301-803-A		DIN EN 175 301-803-A	DIN EN 175 301-803-A	DIN EN 175 301-803-A	DIN EN 175 301-803-A
Housing Color	transparent, coding plate black	transparent, coding plate black		transparent, coding plate black	transparent, coding plate black	transparent, coding plate black	transparent, coding plate black
Construction type	A	A		A	A	A	A
Description of Wiring							
LED color		LED red		LED yellow	LED yellow	LED red	LED red
Voltage rectifier				rectifier	rectifier		
Suppressor		diode		Z-diode	Z-diode	diode	varistor
Drawing							
Technical data							
Pin dimensions	6.3 mm x 0.8 mm, 4.8 mm x 0.8 mm	6.3 mm x 0.8 mm, 4.8 mm x 0.8 mm		6.3 mm x 0.8 mm, 4.8 mm x 0.8 mm	6.3 mm x 0.8 mm, 4.8 mm x 0.8 mm	6.3 mm x 0.8 mm, 4.8 mm x 0.8 mm	6.3 mm x 0.8 mm, 4.8 mm x 0.8 mm
Wire stranding	42 x 0.15	42 x 0.15		42 x 0.15	42 x 0.15	42 x 0.15	42 x 0.15
Rated voltage	UC 250 V	DC 24 V		UC 24 V	UC 24 V	DC 24 V	UC 120 V
Rated current	10 A	8 A		8 A	8 A	8 A	8 A
Contact resistance	≤ 4 mOhm	≤ 4 mOhm		≤ 4 mOhm	≤ 4 mOhm	≤ 4 mOhm	≤ 4 mOhm
Mounting	central nut	central nut		central nut	central nut	central nut	central nut
Material							
Contact surface material	Sn	Sn		Sn	Sn	Sn	Sn
Contact bearer material	PA	PA		PA	PA	PA	PA
Housing material	PA	PA		PA	PA	PA	PA
Environmental conditions							
Protection class (IEC 60529)	IP 67 (gasket necessary)	IP 67 (gasket necessary)		IP 67 (gasket necessary)	IP 67 (gasket necessary)	IP 67 (gasket necessary)	IP 67 (gasket necessary)
Pollution severity	3	3		3	3	3	3
Temperature range	-25 °C to +80 °C	-25 °C to +80 °C		-25 °C to +80 °C	-25 °C to +80 °C	-25 °C to +80 °C	-25 °C to +80 °C
Inflammability class							
Housing	94 HB	94 HB		94 HB	94 HB	94 HB	94 HB
Cable	according to VDE 0482-265-2	according to VDE 0482-265-2		according to VDE 0482-265-2	according to VDE 0482-265-2	according to VDE 0482-265-2	according to VDE 0482-265-2
Contact bearer	94 HB	94 HB		94 HB	94 HB	94 HB	94 HB
Packaging unit							
Packaging unit	50 pieces	50 pieces		50 pieces	50 pieces	50 pieces	50 pieces
Scope of delivery and accessories							
Accessories to order separately	(NBR) flat gasket GDM 3-7, Order no. 730 801-002; (NBR) profiled gasket GDM 3-16, Order no. 731 531-002	(NBR) flat gasket GDM 3-7, Order no. 730 801-002; (NBR) profiled gasket GDM 3-16, Order no. 731 531-002		(NBR) flat gasket GDM 3-7, Order no. 730 801-002; (NBR) profiled gasket GDM 3-16, Order no. 731 531-002	(NBR) flat gasket GDM 3-7, Order no. 730 801-002; (NBR) profiled gasket GDM 3-16, Order no. 731 531-002	(NBR) flat gasket GDM 3-7, Order no. 730 801-002; (NBR) profiled gasket GDM 3-16, Order no. 731 531-002	(NBR) flat gasket GDM 3-7, Order no. 730 801-002; (NBR) profiled gasket GDM 3-16, Order no. 731 531-002

RECTANGULAR CONNECTORS

Molded cable socket



TYPE A EN 175301-803 (DIN 43650) / ISO 4400

Product description		
Description	cable socket with molded-onlead, function indicator (LED) with protective circuit (varistor)	
Type	GDML-K 2000 LED 230 HH VR 2m schwarz/black	
Order No.	933 107-111	
Other standard types	transparent housing, coding plate black: cable length 5 m, Order no. 933 107-112; coding plate grey: cable length 2 m, Order no. 933 107-611; cable length 5 m, Order no. 933 107-612	
Number of contacts	2 + PE	
Cable material	PVC	
Cable length	2 m	
Cable diameter	6.5 mm	
Conductor size	0.75 mm ²	
Cable specification	3 x 0.75 mm ² (PVC, grey)	
Cable type	following VDE 0281-5 / H03 VV-F	
Standard	DIN EN 175 301-803-A	
Housing Color	transparent, coding plate black	
Construction type	A	
Description of Wiring		
LED color	LED red	
Voltage rectifier		
Suppressor	varistor	
Drawing		
	<p> ○ connection terminal ⊥ fork type spring 1 = black 2 = blue PE = yellow/green </p>	
Technical data		
Pin dimensions	6.3 mm x 0.8 mm, 4.8 mm x 0.8 mm	
Wire stranding	42 x 0.15	
Rated voltage	UC 250 V	
Rated current	8 A	
Contact resistance	≤ 4 mOhm	
Mounting	central nut	
Material		
Contact surface material	Sn	
Contact bearer material	PA	
Housing material	PA	
Environmental conditions		
Protection class (IEC 60529)	IP 67 (gasket necessary)	
Pollution severity	3	
Temperature range	-25 °C to +80 °C	
Inflammability class		
Housing	94 HB	
Cable	according to VDE 0482-265-2	
Contact bearer	94 HB	
Packaging unit		
Packaging unit	50 pieces	
Scope of delivery and accessories		
Accessories to order separately	(NBR) flat gasket GDM 3-7, Order no. 730 801-002; (NBR) profiled gasket GDM 3-16, Order no. 731 531-002	

Appliance connector



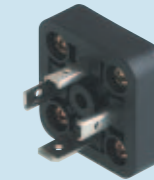
TYPE A EN 175301-803 (DIN 43650) / ISO 4400

Product description		
Description	appliance connector with retaining nut, 2 screws M 3 x 10 and 1 screw M 3 x 5, longitudinal slots, open nut	appliance connector with retaining nut, without screws, longitudinal slots, closed nut
Type	GSA 2000 schwarz/black	GSA 2000 A schwarz/black
Order No.	932 591-100	932 592-500
Number of contacts	2 + PE	2 + PE
Cable gland		
Standard	DIN EN 175 301-803-A	DIN EN 175 301-803-A
Housing Color	black	black
Construction type	A	A
Drawing		
Technical data		
Rated voltage	UC 400 V	UC 400 V
Rated current	16 A	16 A
Contact resistance	≤ 4 mOhm	≤ 4 mOhm
Type of termination	solder, holes for possibility of soldering on both sides (earth contacts: screw)	solder, holes for possibility of soldering on both sides (earth contacts: screw)
Mounting	screw	screw
Material		
Contact surface material	Sn	Sn
Contact bearer material	PA	PA
Housing material	PA	PA
Environmental conditions		
Protection class (IEC 60529)	IP 65 (gasket necessary) (mated)	IP 65 (gasket necessary) (mated)
Pollution severity	3	3
Temperature range	-40 °C to +125 °C	-40 °C to +125 °C
Inflammability class		
Contact bearer	94 V-0	94 V-0
Approvals		
UR	UR	UR
VDE	VDE	VDE
SEV	SEV	SEV
CSA	CSA	CSA
Packaging unit		
Packaging unit	200 pieces	200 pieces
Scope of delivery and accessories		
Accessories to order separately	(NBR) flat gasket GSA 200-4, Order no. 730 843-002; (ECO) flat gasket GSA 200-7, Order no. 730 268-002	(NBR) flat gasket GSA 200-4, Order no. 730 843-002; (ECO) flat gasket GSA 200-7, Order no. 730 268-002

RECTANGULAR CONNECTORS



Appliance connector



TYPE A EN 175301-803 (DIN 43650) / ISO 4400	Product description							
	Description	appliance connector with retaining nut, 2 screws M 3 x 10 and 1 screw M 3 x 5, open nut	appliance connector with retaining nut, 2 screws M 3 x 10 and 1 screw M 3 x 4, longitudinal slots, open nut		appliance connector with retaining nut, without screws, longitudinal slots, closed nut	appliance connector with retaining nut, 2 screws M 3 x 10 and 1 screw M 3 x 5, open nut	molded appliance coupler (IP 65 enclosure) with 4 cross-head screws and solder lug for flexible cables	molded appliance coupler (IP 65 enclosure) with 4 cross-head screws and solder lug for flexible cables
	Type	GSA 2000 N schwarz/black	GSA 3000 schwarz/black		GSA 3000 A schwarz/black	GSA 3000 N schwarz/black	GSA-U 2000 N LO schwarz/black	GSA-U 3000 N LO schwarz/black
	Order No.	932 967-100	932 597-100		932 598-500	932 968-100	933 378-100	933 379-100
	Number of contacts	2 + PE	3 + PE		3 + PE	3 + PE	2 + PE	3 + PE
	Cable gland							
	Standard	DIN EN 175 301-803-A	DIN EN 175 301-803-A		DIN EN 175 301-803-A	DIN EN 175 301-803-A	DIN EN 175 301-803-A	DIN EN 175 301-803-A
	Housing Color	black	black		black	black	black	black
	Construction type	A	A		A	A	A	A
	Drawing							
Technical data								
Rated voltage	UC 400 V	UC 400 V		UC 400 V	UC 400 V	UC 400 V	UC 400 V	
Rated current	16 A	16 A		16 A	16 A	16 A	16 A	
Contact resistance	≤ 4 mOhm	≤ 4 mOhm		≤ 4 mOhm	≤ 4 mOhm	≤ 4 mOhm	≤ 4 mOhm	
Type of termination	solder (earth contacts: screw)	solder, holes for possibility of soldering on both sides (earth contacts: screw)		solder, holes for possibility of soldering on both sides (earth contacts: screw)	solder (earth contacts: screw)	solder	solder	
Mounting	screw	screw		screw	screw	screw	screw	
Material								
Contact surface material	Sn	Sn		Sn	Sn	Sn	Sn	
Contact bearer material	PA	PA		PA	PA	PA	PA	
Housing material	PA	PA		PA	PA	PA	PA	
Environmental conditions								
Protection class (IEC 60529)	IP 65 (gasket necessary) (mated)	IP 65 (gasket necessary) (mated)		IP 65 (gasket necessary) (mated)	IP 65 (gasket necessary) (mated)	IP 65 (gasket necessary)	IP 65 (gasket necessary)	
Pollution severity	3	3		3	3	3	3	
Temperature range	-40 °C to +125 °C	-40 °C to +125 °C		-40 °C to +125 °C	-40 °C to +125 °C	-40 °C to +125 °C	-40 °C to +125 °C	
Inflammability class								
Contact bearer	94 V-0	94 V-0		94 V-0	94 V-0	94 V-0	94 V-0	
Approvals								
UR	UR	UR		UR	UR	UR	UR	
VDE	VDE	VDE		VDE	VDE			
SEV	SEV			SEV	SEV			
CSA	CSA	CSA		CSA	CSA			
Packaging unit								
Packaging unit	200 pieces	200 pieces		200 pieces	200 pieces	200 pieces	200 pieces	
Scope of delivery and accessories								
Accessories to order separately	(NBR) flat gasket GSA 200-4, Order no. 730 843-002; (ECO) flat gasket GSA 200-7, Order no. 730 268-002	(NBR) flat gasket GSA 200-4, Order no. 730 843-002; (ECO) flat gasket GSA 200-7, Order no. 730 268-002		(NBR) flat gasket GSA 200-4, Order no. 730 843-002; (ECO) flat gasket GSA 200-7, Order no. 730 268-002	(NBR) flat gasket GSA 200-4, Order no. 730 843-002; (ECO) flat gasket GSA 200-7, Order no. 730 268-002	(NBR) flat gasket GSA 200-4, Order no. 730 843-002; (ECO) flat gasket GSA 200-7, Order no. 730 268-002	(NBR) flat gasket GSA 200-4, Order no. 730 843-002; (ECO) flat gasket GSA 200-7, Order no. 730 268-002	

RECTANGULAR CONNECTORS



Appliance connector



TYPE A EN 175301-803 (DIN 43650) / ISO 4400

Product description							
Description	molded appliance coupler (IP 65 enclosure) with 4 cross-head screws and insulation displacement contact (without solder/screw)	appliance connector with retaining nut, PE contact, 2 screws M 3 x 10 and 1 screw M 3 x 5, without contacts		appliance connector for installation in sheet metal, rotating round collar, retaining nut and 4 screws M 3 x 6	appliance connector for installation in sheet metal, rotating round collar, retaining nut and 4 screws M 3 x 6	appliance connector for injection molding (IP 65 unmated) with solder lug for flexible cables	appliance connector for injection molding (IP 65 unmated) with solder lug for flexible cables
Type	GSA-U 3075 SK schwarz/black	GSC 300 schwarz/black		GSE 2000 N4 schwarz/black	GSE 3000 N4 schwarz/black	GSR-U 2000 LO schwarz/black	GSR-U 3000 LO schwarz/black
Order No.	933 381-100	933 382-100		932 886-100	932 890-100	933 377-100	933 376-100
Number of contacts	3 + PE	2 + PE / 3 + PE		2 + PE	3 + PE	2 + PE	3 + PE
Cable gland							
Standard	DIN EN 175 301-803-A	DIN EN 175 301-803-A		DIN EN 175 301-803-A	DIN EN 175 301-803-A	DIN EN 175 301-803-A	DIN EN 175 301-803-A
Housing Color	black	black		black	black	black	black
Construction type	A	A		A	A	A	A
Drawing							
Technical data							
Rated voltage	UC 400 V	UC 400 V		UC 400 V	UC 400 V	UC 400 V	UC 400 V
Rated current	16 A	16 A		16 A	16 A	16 A	16 A
Contact resistance	≤ 4 mOhm	≤ 4 mOhm		≤ 4 mOhm	≤ 4 mOhm	≤ 4 mOhm	≤ 4 mOhm
Type of termination	insulation displacement contact(0.75 mm ²), wire diameter incl. insulation max. 2.4 mm	crimp (earth contacts: screw)		solder	solder	solder	solder
Mounting	screw	screw		screw	screw	for molding	for molding
Material							
Contact surface material	Sn	Sn		Sn	Sn	Sn	Sn
Contact bearer material	PA	PA		PA	PA	PA	PA
Housing material	PA	PA		PA	PA	PA	PA
Environmental conditions							
Protection class (IEC 60529)	IP 65 (gasket necessary)	IP 65 (gasket necessary) (mated)		IP 65 (gasket necessary) (mated)	IP 65 (gasket necessary) (mated)	IP 65 (gasket necessary)	IP 65 (gasket necessary)
Pollution severity	3	3		3	3	3	3
Temperature range	-40 °C to +125 °C	-40 °C to +125 °C		-40 °C to +125 °C	-40 °C to +125 °C	-40 °C to +125 °C	-40 °C to +125 °C
Inflammability class							
Contact bearer	94 V-0	94 HB		94 HB	94 HB	94 V-0	94 V-0
Approvals							
UR	UR					UR	UR
VDE		VDE		VDE	VDE		
SEV		SEV		SEV	SEV		
CSA							
Packaging unit							
Packaging unit	200 pieces	100 pieces		200 pieces	200 pieces	200 pieces	200 pieces
Scope of delivery and accessories							
Accessories to order separately	(NBR) flat gasket GSA 200-4, Order no. 730 843-002; (ECO) flat gasket GSA 200-7, Order no. 730 268-002	(NBR) flat gasket GSA 200-4, Order no. 730 843-002; (ECO) flat gasket GSA 200-7, Order no. 730 268-002; crimping contact RMC 480, Order no. 731 470-021; crimping pliers XZC 0702, Order no. 932 507-009		(NBR) flat gasket GSE 2000-2, Order no. 733 973-002; (ECO) flat gasket GSE 2000-3, Order no. 733 846-002	(NBR) flat gasket GSE 2000-2, Order no. 733 973-002; (ECO) flat gasket GSE 2000-3, Order no. 733 846-002		

RECTANGULAR CONNECTORS



Appliance connector



TYPE A EN 175301-803 (DIN 43650) / ISO 4400

Product description							
Description	appliance connector with thread, appliance connector, threaded sleeve, grip ring, O-ring (NBR)	appliance connector with thread, appliance connector, threaded sleeve, grip ring, O-ring (NBR)		appliance connector with thread, appliance connector, threaded sleeve, grip ring, O-ring (NBR)	appliance connector with thread, appliance connector, threaded sleeve, grip ring, O-ring (NBR)	appliance connector with thread, appliance connector, threaded sleeve, grip ring, O-ring (NBR)	appliance connector with thread, appliance connector, threaded sleeve, grip ring, O-ring (NBR)
Type	GSP 211 PG11 schwarz/black	GSP 212 1/2" NPTF schwarz/black		GSP 213 PG13,5 schwarz/black	GSP 2 M20 schwarz/black	GSP 311 PG11 schwarz/black	GSP 312 1/2" NPTF schwarz/black
Order No.	931 298-001	931 298-004		931 298-003	931 298-006	931 297-001	931 297-004
Number of contacts	2 + PE	2 + PE		2 + PE	2 + PE	3 + PE	3 + PE
Cable gland	PG 11	1/2" NPTF		PG 13.5	M 20	PG 11	1/2" NPTF
Standard	DIN EN 175 301-803-A	DIN EN 175 301-803-A		DIN EN 175 301-803-A	DIN EN 175 301-803-A	DIN EN 175 301-803-A	DIN EN 175 301-803-A
Housing Color	black	black		black	black	black	black
Construction type	A	A		A	A	A	A
Drawing							
Technical data Rated voltage UC 400 V Rated current 16 A Contact resistance <= 4 mOhm Type of termination solder Mounting screw		UC 400 V 16 A <= 4 mOhm solder screw		UC 400 V 16 A <= 4 mOhm solder screw		UC 400 V 16 A <= 4 mOhm solder screw	
Material Contact surface material Sn Contact bearer material PA Housing material PA		Sn PA PA		Sn PA PA		Sn PA PA	
Environmental conditions Protection class (IEC 60529) IP 65 (gasket necessary) (mated) Pollution severity 3 Temperature range -40 °C to +125 °C		IP 65 (gasket necessary) (mated) 3 -40 °C to +125 °C		IP 65 (gasket necessary) (mated) 3 -40 °C to +125 °C		IP 65 (gasket necessary) (mated) 3 -40 °C to +125 °C	
Inflammability class Contact bearer 94 HB		94 HB		94 HB		94 HB	
Approvals UR VDE SEV CSA		VDE SEV		VDE SEV		VDE SEV	
Packaging unit Packaging unit 200 pieces		200 pieces		200 pieces		200 pieces	
Scope of delivery and accessories Accessories to order separately							



RECTANGULAR CONNECTORS

Appliance connector



TYPE A EN 175301-803 (DIN 43650) / ISO 4400

Product description		appliance connector with thread, appliance connector, threaded sleeve, grip ring, O-ring (NBR)		appliance connector with thread, appliance connector, threaded sleeve, grip ring, O-ring (NBR)		appliance connector with thread, appliance connector, threaded sleeve, grip ring, O-ring (NBR)		appliance connector for profiled gaskets GSAZ, front connection, 1 hollow screw, 1 screw M 3 x 5		appliance connector for profiled gaskets GSAZ, front connection, 1 hollow screw, 1 screw M 3 x 5		
Type	GSP 313 PG13,5 schwarz/black	GSP 316 PG16 schwarz/black		GSP 3 M20 schwarz/black	GSAZ 200 schwarz/black	GSAZ 300 schwarz/black						
Order No.	931 297-003	931 297-002		931 297-006	932 429-100	932 430-100						
Number of contacts	3 + PE	3 + PE		3 + PE	2 + PE	3 + PE						
Cable gland	PG 13.5	PG 16		M 20								
Standard	DIN EN 175 301-803-A	DIN EN 175 301-803-A		DIN EN 175 301-803-A	DIN EN 175 301-803-A	DIN EN 175 301-803-A						
Housing Color	black	black		black	black	black						
Construction type	A	A		A	A	A						
Drawing												
Technical data		UC 400 V		UC 400 V		UC 400 V		UC 400 V		UC 400 V		
Rated voltage	UC 400 V	UC 400 V		UC 400 V	UC 400 V	UC 400 V						
Rated current	16 A	16 A		16 A	16 A	16 A						
Contact resistance	≤ 4 mOhm	≤ 4 mOhm		≤ 4 mOhm	≤ 4 mOhm	≤ 4 mOhm						
Type of termination	solder	solder		solder	solder, holes for possibility of soldering on both sides (earth contacts: screw)	solder, holes for possibility of soldering on both sides (earth contacts: screw)						
Mounting	screw	screw		screw	screw	screw						
Material		Sn		Sn		Sn		Sn		Sn		
Contact surface material	Sn	Sn		Sn	Sn	Sn						
Contact bearer material	PA	PA		PA	PA	PA						
Housing material	PA	PA		PA	PA	PA						
Environmental conditions		IP 65 (gasket necessary) (mated)		IP 65 (gasket necessary) (mated)		IP 65 (gasket necessary) (mated)		IP 65 (gasket necessary) (mated)		IP 65 (gasket necessary) (mated)		
Protection class (IEC 60529)	IP 65 (gasket necessary) (mated)	IP 65 (gasket necessary) (mated)		IP 65 (gasket necessary) (mated)	IP 65 (gasket necessary) (mated)	IP 65 (gasket necessary) (mated)						
Pollution severity	3	3		3	3	3						
Temperature range	-40 °C to +125 °C	-40 °C to +125 °C		-40 °C to +125 °C	-40 °C to +125 °C	-40 °C to +125 °C						
Inflammability class		94 HB		94 HB		94 HB		94 HB		94 HB		
Contact bearer	94 HB	94 HB		94 HB	94 HB	94 HB						
Approvals		VDE		VDE		VDE		VDE		VDE		
UR	VDE	VDE		VDE	VDE	VDE						
VDE	SEV	SEV		SEV	SEV	SEV						
SEV												
CSA												
Packaging unit		200 pieces		200 pieces		200 pieces		200 pieces		200 pieces		
Packaging unit	200 pieces	200 pieces		200 pieces	200 pieces	200 pieces						
Scope of delivery and accessories								(NBR) flat gasket GSAZ 35/43, Order no. 733 262-002; (NBR) flat gasket GSAZ 40/62, Order no. 733 264-002; (NBR) flat gasket GSAZ 60/120, Order no. 733 266-002		(NBR) flat gasket GSAZ 35/43, Order no. 733 262-002; (NBR) flat gasket GSAZ 40/62, Order no. 733 264-002; (NBR) flat gasket GSAZ 60/120, Order no. 733 266-002		
Accessories to order separately												

RECTANGULAR CONNECTORS

Cable socket with electronic insert



TYPE A EN 175301-803 (DIN 43650) / ISO 4400

Product description								
Description	bridge-type rectifier with protective circuit (varistor)	bridge-type rectifier with protective circuit (varistor and capacitor) for electromagnetic compatibility critical applications		half-wave rectifier with protective circuit (diode)	bridge-type rectifier with protective circuit (varistor) and function indicator (LED)	LED rectifier with protective circuit (varistor) and function indicator (LED)	function indicator (LED) with freewheeling diode	
Type	GDML 2016 GB1 schwarz/black	GDML 2016 GBC schwarz/black		GDML 2016 GE 1 G schwarz/black	GDML 2016 GB1 LED 24 schwarz/black	GDML 2016 LED 24 GB schwarz/black	GDML 2016 LED 24 schwarz/black	
Order No.	934 407-100	934 408-100		934 409-100	934 410-002	934 411-002	934 412-002	
Other standard types	grey housing, Order no. 934 407-106	grey housing, Order no. 934 408-106			transparent housing, cable gland grey; Order no. 934 410-003	transparent housing, cable gland grey; Order no. 934 411-003	transparent housing, cable gland grey; Order no. 934 412-003	
Number of contacts	2 + PE	2 + PE		2 + PE	2 + PE	2 + PE	2 + PE	
Cable gland	M 16 (black)	M 16 (black)		M 16 (black)	M 16 (black)	M 16 (black)	M 16 (black)	
Conductor size	max. 1.5 mm ²	max. 1.5 mm ²		max. 1.5 mm ²	max. 1.5 mm ²	max. 1.5 mm ²	max. 1.5 mm ²	
Standard	DIN EN 175 301-803-A	DIN EN 175 301-803-A		DIN EN 175 301-803-A	DIN EN 175 301-803-A	DIN EN 175 301-803-A	DIN EN 175 301-803-A	
Housing Color	black	black		black	transparent	transparent	transparent	
Construction type	A	A		A	A	A	A	
Description of Wiring								
LED color					LED red	LED red	LED red	
Voltage rectifier	bridge-type rectifier	bridge-type rectifier		half-wave rectifier	bridge-type rectifier	for LED	LED-half-wave rectifier	
Suppressor	varistor	varistor		diode	varistor	varistor		
Other characteristics		capacitor						
Drawing								
Technical data								
Pin dimensions	6.3 mm x 0.8 mm, 4.8 mm x 0.8 mm	6.3 mm x 0.8 mm, 4.8 mm x 0.8 mm		6.3 mm x 0.8 mm, 4.8 mm x 0.8 mm	6.3 mm x 0.8 mm, 4.8 mm x 0.8 mm	6.3 mm x 0.8 mm, 4.8 mm x 0.8 mm	6.3 mm x 0.8 mm, 4.8 mm x 0.8 mm	
Rated voltage	UC 250 V	UC 250 V		UC 250 V	UC 24 V	UC 24 V	UC 24 V	
Rated current	2 A (SEV 1011 : 1.5 A) AC / 1 A DC	2 A (SEV 1011 : 1.5 A) AC / 1 A DC		1 A	2 A (SEV 1011 : 1.5 A) AC / 1 A DC	8 A	8 A	
Contact resistance	≤ 4 mOhm	≤ 4 mOhm		≤ 4 mOhm	≤ 4 mOhm	≤ 4 mOhm	≤ 4 mOhm	
Type of termination	screw	screw		screw	screw	screw	screw	
Suitable cables	4.5 mm to 10 mm diameter	4.5 mm to 10 mm diameter		4.5 mm to 10 mm diameter	4.5 mm to 10 mm diameter	4.5 mm to 10 mm diameter	4.5 mm to 10 mm diameter	
Mounting	central nut	central nut		central nut	central nut	central nut	central nut	
Material								
Contact surface material	Sn	Sn		Sn	Sn	Sn	Sn	
Contact bearer material	PA	PA		PA	PA	PA	PA	
Housing material	PA	PA		PA	PA	PA	PA	
Environmental conditions								
Protection class (IEC 60529)	IP 65 (gasket necessary)	IP 65 (gasket necessary)		IP 65 (gasket necessary)	IP 65 (gasket necessary)	IP 65 (gasket necessary)	IP 65 (gasket necessary)	
Pollution severity	3	3		3	3	3	3	
Temperature range	-40 °C to +90 °C	-40 °C to +90 °C		-40 °C to +90 °C	-40 °C to +90 °C	-40 °C to +90 °C	-40 °C to +90 °C	
Inflammability class								
Housing	94 HB	94 HB		94 HB	94 HB	94 HB	94 HB	
Contact bearer	94 HB	94 HB		94 HB	94 HB	94 HB	94 HB	
Approvals								
VDE								
SEV								
GL								
Packaging unit								
Packaging unit	50 pieces	50 pieces		50 pieces	50 pieces	50 pieces	50 pieces	
Scope of delivery and accessories								
Accessories to order separately	(NBR) flat gasket GDM 3-7, Order no. 730 801-002; (ECO) flat gasket GDM 3-21, Order no. 731 739-002; profiled gasket GDM 3-16, Order no. 731 531-002; knurled screw GDM 3011-8, Order no. 732 574-001; stainless steel screw GDM 3011 RF-1, Order no. 734 363-001	(NBR) flat gasket GDM 3-7, Order no. 730 801-002; (ECO) flat gasket GDM 3-21, Order no. 731 739-002; profiled gasket GDM 3-16, Order no. 731 531-002; knurled screw GDM 3011-8, Order no. 732 574-001; stainless steel screw GDM 3011 RF-1, Order no. 734 363-001		(NBR) flat gasket GDM 3-7, Order no. 730 801-002; (ECO) flat gasket GDM 3-21, Order no. 731 739-002; profiled gasket GDM 3-16, Order no. 731 531-002; knurled screw GDM 3011-8, Order no. 732 574-001; stainless steel screw GDM 3011 RF-1, Order no. 734 363-001	(NBR) flat gasket GDM 3-7, Order no. 730 801-002; (ECO) flat gasket GDM 3-21, Order no. 731 739-002; profiled gasket GDM 3-16, Order no. 731 531-002; knurled screw GDM 3011-8, Order no. 732 574-001; stainless steel screw GDM 3011 RF-1, Order no. 734 363-001	(NBR) flat gasket GDM 3-7, Order no. 730 801-002; (ECO) flat gasket GDM 3-21, Order no. 731 739-002; profiled gasket GDM 3-16, Order no. 731 531-002; knurled screw GDM 3011-8, Order no. 732 574-001; stainless steel screw GDM 3011 RF-1, Order no. 734 363-001	(NBR) flat gasket GDM 3-7, Order no. 730 801-002; (ECO) flat gasket GDM 3-21, Order no. 731 739-002; profiled gasket GDM 3-16, Order no. 731 531-002; knurled screw GDM 3011-8, Order no. 732 574-001; stainless steel screw GDM 3011 RF-1, Order no. 734 363-001	(NBR) flat gasket GDM 3-7, Order no. 730 801-002; (ECO) flat gasket GDM 3-21, Order no. 731 739-002; profiled gasket GDM 3-16, Order no. 731 531-002; knurled screw GDM 3011-8, Order no. 732 574-001; stainless steel screw GDM 3011 RF-1, Order no. 734 363-001