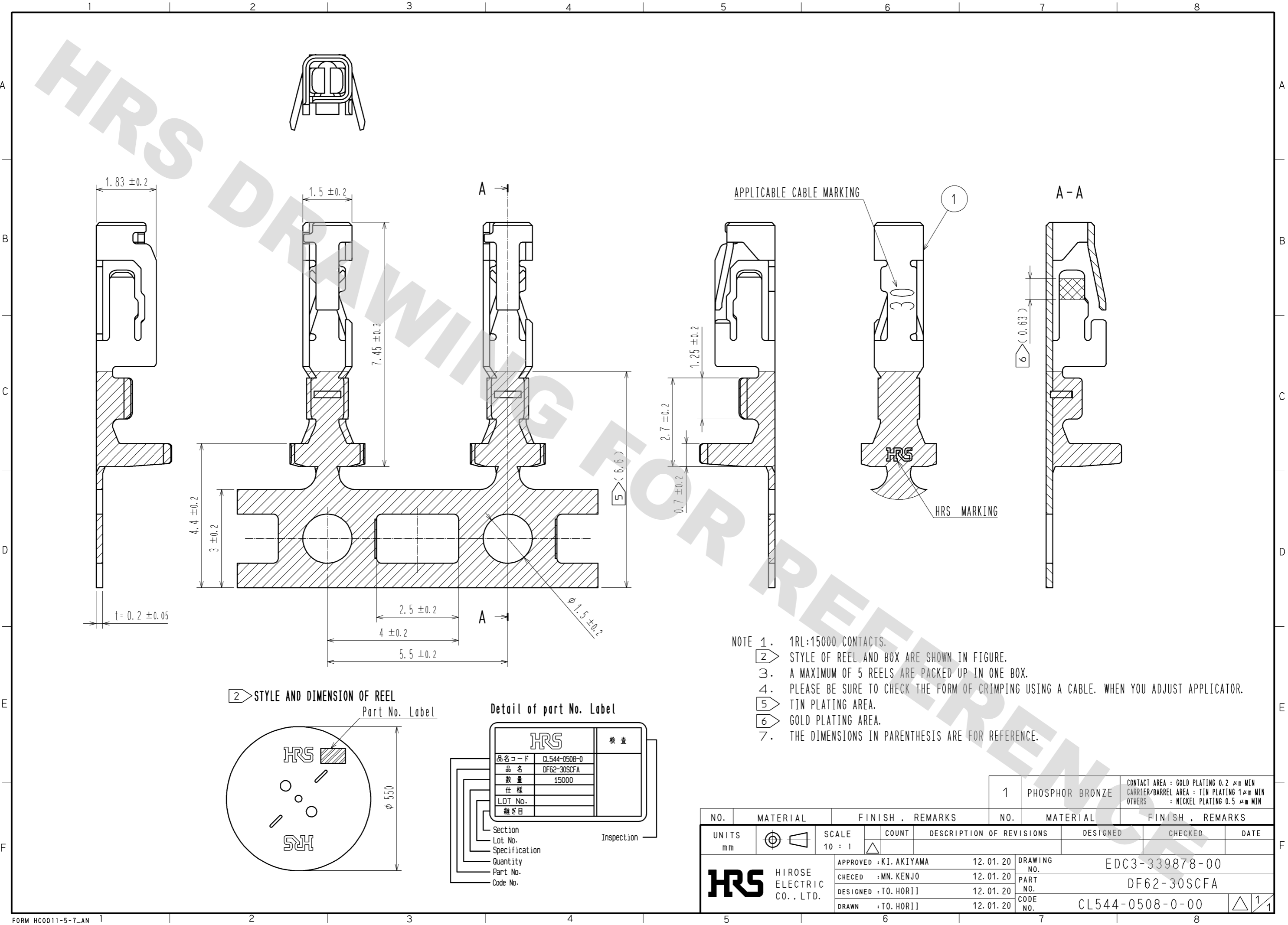
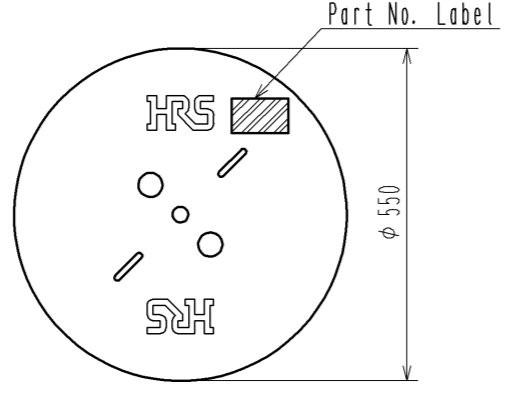


DRAWING FOR REFERENCE: This is subject to change without notice
08/11/2012



- NOTE 1. 1RL:15000 CONTACTS.
 2. STYLE OF REEL AND BOX ARE SHOWN IN FIGURE.
 3. A MAXIMUM OF 5 REELS ARE PACKED UP IN ONE BOX.
 4. PLEASE BE SURE TO CHECK THE FORM OF CRIMPING USING A CABLE. WHEN YOU ADJUST APPLICATOR.
 5. TIN PLATING AREA.
 6. GOLD PLATING AREA.
 7. THE DIMENSIONS IN PARENTHESIS ARE FOR REFERENCE.

2. STYLE AND DIMENSION OF REEL



Detail of part No. Label

HRS		検査
品名コード	CL544-0508-0	Inspection
品名	DF62-30SCFA	
数量	15000	
仕様		
LOT No.		
梱ぎ目		
Section		
Lot No.		
Specification		
Quantity		
Part No.		
Code No.		

NO. MATERIAL FINISH . REMARKS		NO. MATERIAL FINISH . REMARKS	
1 PHOSPHOR BRONZE		CONTACT AREA : GOLD PLATING 0.2 μm MIN CARRIER/BARREL AREA : TIN PLATING 1 μm MIN OTHERS : NICKEL PLATING 0.5 μm MIN	
UNITS mm	SCALE 10 : 1	COUNT	DESCRIPTION OF REVISIONS
			DESIGNED
			CHECKED
			DATE
APPROVED : KI. AKIYAMA 12.01.20		DRAWING NO. EDC3-339878-00	
CHECKED : MN. KENJO 12.01.20		PART NO. DF62-30SCFA	
DESIGNED : TO. HORII 12.01.20		CODE NO. CL544-0508-0-00	
DRAWN : TO. HORII 12.01.20			