

Upper part of housing - BC 161,6 OT U22 KMGY



2278526

<https://www.phoenixcontact.com/gb/products/2278526>

Please be informed that the data shown in this PDF document is generated from our Online Catalog. Please find the complete data in the user documentation. Our General Terms of Use for Downloads are valid.



DIN rail housing for use in distribution boards in accordance with DIN 43880, Upper housing part (U22) with vents, Installation depth connection technology: 22.35 mm, width: 161.6 mm, height: 89.7 mm, depth: 54.85 mm, color: light grey (7035)

Your advantages

- Coordinated housing and connection system for faster device development
- Individual online configuration for diverse applications in building automation
- Variety of connection technology
- Can be mounted on the DIN rail or the wall
- With DIN-rail-mountable bus connector and power connector system as an option
- Tool-free mounting
- Available in overall widths from one to nine HP (17.8 mm ... 161.6 mm)
- Compliant with DIN EN 43880

Commercial Data

Item number	2278526
Packing unit	10 pc
Minimum order quantity	10 pc
Sales Key	ACHBAB
Product Key	ACHBAB
Catalog Page	Page 700 (C-1-2013)
GTIN	4046356299473
Weight per Piece (including packing)	59.21 g
Weight per Piece (excluding packing)	55.34 g
Customs tariff number	85472000
Country of origin	DE

Upper part of housing - BC 161,6 OT U22 KMGY



2278526

<https://www.phoenixcontact.com/gb/products/2278526>

Technical Data

Notes

Assembly instruction:

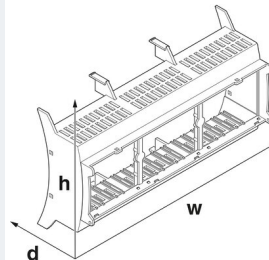
Refer to the data sheet for the range in the download area.

Product properties

Product type	Upper housing part
Max. number of positions	96 (pitch: 2.5 mm)
	72 (pitch: 3.5 mm)
	54 (pitch: 5 mm)
	36 (pitch: 7.5 mm)
Type	Upper housing part (U22) with vents
Housing type	DIN rail housing for use in distribution boards in accordance with DIN 43880
Ventilation openings present	yes
Housing series	BC
	1 (Both sides)

Dimensions

Dimensional drawing



Width	161.6 mm
Height	89.7 mm
Depth	54.85 mm
Horizontal pitch	9 Div.

PCB design

PCB thickness	1.4 mm ... 1.8 mm
---------------	-------------------

Material specifications

Color	light grey (7035)
Flammability rating according to UL 94	V0
Surface characteristics	untreated
Housing material	Polycarbonate

Environmental and real-life conditions

Vibration test

Specification	IEC 60068-2-6:2007-12
---------------	-----------------------

Upper part of housing - BC 161,6 OT U22 KMGY



2278526

<https://www.phoenixcontact.com/gb/products/2278526>

Frequency	10 - 150 - 10 Hz
Sweep speed	1 octave/min
Amplitude	0.15 mm (10 - 58.1 Hz)
Acceleration	2g (58.1 - 150 Hz)
Test duration per axis	2.5 h
Test directions	X-, Y- and Z-axis

Glow-wire test

Specification	DIN EN 60695-2-11 (VDE 0471-2-11):2014-11
Temperature	850 °C
Time of exposure	30 s

Mechanical strength / tumbling barrel

Specification	IEC 60068-2-31:2008-05
Height of fall	50 cm
Frequency	50

Shocks

Specification	IEC 60068-2-27:2008-02
Pulse shape	Half-sine
Acceleration	15g
Shock duration	11 ms
Number of shocks per direction	3
Test directions	X-, Y- and Z-axis (pos. and neg.)

Degree of protection (IP code)

Specification	IEC 60529:1989-11 + AMD 1:1999-11 + AMD 2:2013-08
---------------	---

Ambient conditions

Max. IP code to attain	IP20
Ambient temperature (operation)	-40 °C ... 105 °C (depending on power dissipation)
Ambient temperature (storage/transport)	-40 °C ... 70 °C
Ambient temperature (assembly)	-5 °C ... 100 °C
Relative humidity (storage/transport)	95 %

PCB data

Number of PCB holders	18
Type of PCB mount	Latching
Thickness of the PCB	1.4 mm ... 1.8 mm

Mounting

Mounting type	Snap in
Mounting position	Vertical (horizontal DIN rail)

Packaging specifications

Type of packaging	packed in cardboard
Outer packaging type	Carton

Upper part of housing - BC 161,6 OT U22 KMGY

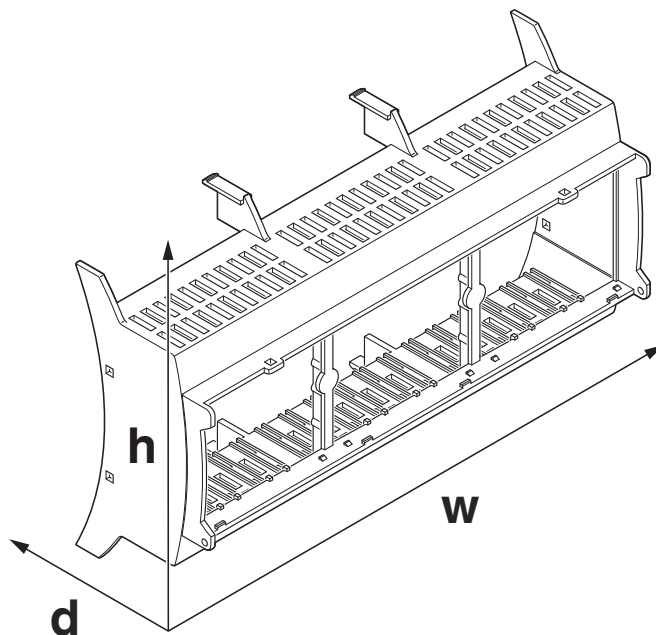
2278526

<https://www.phoenixcontact.com/gb/products/2278526>



Drawings

Dimensional drawing



Schematic figure for illustrating the item dimensions. The figure is not of the desired product. For further details, refer to the product drawings in the "Downloads" tab.

Upper part of housing - BC 161,6 OT U22 KMGY

2278526

<https://www.phoenixcontact.com/gb/products/2278526>



Approvals



EAC

Approval ID: B.01687



UL Recognized

Approval ID: FILE E 240868

Upper part of housing - BC 161,6 OT U22 KMGY



2278526

<https://www.phoenixcontact.com/gb/products/2278526>

Classifications

ECLASS

ECLASS-9.0	27182702
ECLASS-10.0.1	27182702
ECLASS-11.0	27182702

ETIM

ETIM 8.0	EC001031
----------	----------

UNSPSC

UNSPSC 21.0	31261500
-------------	----------

Upper part of housing - BC 161,6 OT U22 KMGY

2278526

<https://www.phoenixcontact.com/gb/products/2278526>



Environmental Product Compliance

China RoHS

Environmentally friendly use period: unlimited = EFUP-e

No hazardous substances above threshold values

2278526

<https://www.phoenixcontact.com/gb/products/2278526>

Mandatory Accessories

PCB terminal block

PCB terminal block - MKDSN 1,5/ 2 HT BK - 1985849

<https://www.phoenixcontact.com/gb/products/1985849>



PCB terminal block, nominal current: 13.5 A, rated voltage (III/2): 320 V, nominal cross section: 1.5 mm², number of potentials: 2, number of rows: 1, number of positions per row: 2, product range: MKDSN 1,5/-HT, pitch: 5 mm, connection method: Screw connection with tension sleeve, screw head form: L Slotted, mounting: THR soldering, conductor/PCB connection direction: 0 °, color: black, Pin layout: Linear pinning, Solder pin [P]: 3.5 mm, number of solder pins per potential: 1, type of packaging: packed in cardboard. This article can be soldered in the reflow furnace together with SMD components.

PCB terminal block

PCB terminal block - MKDSN 2,5/ 3 HT BK - 1985933

<https://www.phoenixcontact.com/gb/products/1985933>



PCB terminal block, nominal current: 16 A, rated voltage (III/2): 320 V, nominal cross section: 2.5 mm², number of potentials: 3, number of rows: 1, number of positions per row: 3, product range: MKDSN 2,5/-HT, pitch: 5 mm, connection method: Screw connection with tension sleeve, screw head form: L Slotted, mounting: THR soldering, conductor/PCB connection direction: 0 °, color: black, Pin layout: Linear pinning, Solder pin [P]: 3.5 mm, number of solder pins per potential: 1, type of packaging: packed in cardboard. This article can be soldered in the reflow furnace together with SMD components.

Upper part of housing - BC 161,6 OT U22 KMGY

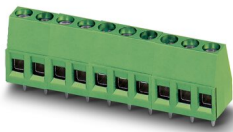
2278526

<https://www.phoenixcontact.com/gb/products/2278526>

PCB terminal block

PCB terminal block - MKDS 1,5/ 3 - 1715035

<https://www.phoenixcontact.com/gb/products/1715035>



PCB terminal block, nominal current: 17.5 A, rated voltage (III/2): 400 V, nominal cross section: 1.5 mm², number of potentials: 3, number of rows: 1, number of positions per row: 3, product range: MKDS 1,5, pitch: 5 mm, connection method: Screw connection with tension sleeve, screw head form: L Slotted, mounting: Wave soldering, conductor/PCB connection direction: 0 °, color: green, Pin layout: Linear pinning, Solder pin [P]: 3.5 mm, number of solder pins per potential: 1, type of packaging: packed in cardboard. The article can be aligned to create different nos. of positions!

PCB terminal block

PCB terminal block - MKDSN 2,5/ 3 - 1890976

<https://www.phoenixcontact.com/gb/products/1890976>



PCB terminal block, nominal current: 24 A, rated voltage (III/2): 400 V, nominal cross section: 2.5 mm², number of potentials: 3, number of rows: 1, number of positions per row: 3, product range: MKDSN 2,5, pitch: 5 mm, connection method: Screw connection with tension sleeve, screw head form: H1L Philipps recess with slotted Torx, mounting: Wave soldering, conductor/PCB connection direction: 0 °, color: green, Pin layout: Linear pinning, Solder pin [P]: 3.5 mm, number of solder pins per potential: 1, type of packaging: packed in cardboard. The article can be aligned to create different nos. of positions!

Upper part of housing - BC 161,6 OT U22 KMGY

2278526

<https://www.phoenixcontact.com/gb/products/2278526>

PCB terminal block

PCB terminal block - MKKDSH 3/ 3 - 1721346

<https://www.phoenixcontact.com/gb/products/1721346>



PCB terminal block, nominal current: 24 A, rated voltage (III/2): 400 V, nominal cross section: 2.5 mm², number of potentials: 3, number of rows: 1, number of positions per row: 3, product range: MKKDSH 3, pitch: 5 mm, connection method: Screw connection with tension sleeve, screw head form: L Slotted, mounting: Wave soldering, conductor/PCB connection direction: 0 °, color: green, Pin layout: Linear pinning, Solder pin [P]: 5 mm, number of solder pins per potential: 1, type of packaging: packed in cardboard. The article can be aligned to create different nos. of positions!

PCB terminal block

PCB terminal block - GMKDS 1,5/ 2 - 1717020

<https://www.phoenixcontact.com/gb/products/1717020>



PCB terminal block, nominal current: 17.5 A, rated voltage (III/2): 630 V, nominal cross section: 1.5 mm², number of potentials: 2, number of rows: 1, number of positions per row: 2, product range: GMKDS 1,5, pitch: 7.5 mm, connection method: Screw connection with tension sleeve, screw head form: L Slotted, mounting: Wave soldering, conductor/PCB connection direction: 0 °, color: green, Pin layout: Linear pinning, Solder pin [P]: 3.5 mm, number of solder pins per potential: 1, type of packaging: packed in cardboard. The article can be aligned to create different nos. of positions!

Upper part of housing - BC 161,6 OT U22 KMGY

2278526

<https://www.phoenixcontact.com/gb/products/2278526>

PCB terminal block

PCB terminal block - GMKDSP 3/ 2 - 1732021

<https://www.phoenixcontact.com/gb/products/1732021>

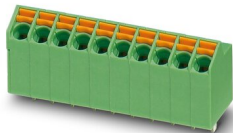


PCB terminal block, nominal current: 24 A, rated voltage (III/2): 630 V, nominal cross section: 2.5 mm², number of potentials: 2, number of rows: 1, number of positions per row: 2, product range: GMKDSP 3, pitch: 7.5 mm, connection method: Screw connection with tension sleeve, screw head form: L Slotted, mounting: Wave soldering, conductor/PCB connection direction: 0 °, color: green, Pin layout: Linear pinning, Solder pin [P]: 5 mm, number of solder pins per potential: 1, type of packaging: packed in cardboard. The article can be aligned to create different nos. of positions!

PCB terminal block

PCB terminal block - SPTA 1/ 8-3,5 - 1752162

<https://www.phoenixcontact.com/gb/products/1752162>



PCB terminal block, nominal current: 9 A, rated voltage (III/2): 200 V, nominal cross section: 1 mm², number of potentials: 8, number of rows: 1, number of positions per row: 8, product range: SPTA 1/, pitch: 3.5 mm, connection method: Push-in spring connection, mounting: Wave soldering, conductor/PCB connection direction: 65 °, color: green, Pin layout: Linear pinning, Solder pin [P]: 3.5 mm, number of solder pins per potential: 1, type of packaging: packed in cardboard

Upper part of housing - BC 161,6 OT U22 KMGY

2278526

<https://www.phoenixcontact.com/gb/products/2278526>

PCB terminal block

PCB terminal block - SPTA 1/ 6-5,0 - 1752256

<https://www.phoenixcontact.com/gb/products/1752256>

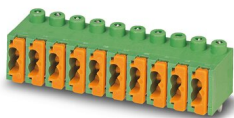


PCB terminal block, nominal current: 9 A, rated voltage (III/2): 320 V, nominal cross section: 1 mm², number of potentials: 6, number of rows: 1, number of positions per row: 6, product range: SPTA 1/, pitch: 5 mm, connection method: Push-in spring connection, mounting: Wave soldering, conductor/PCB connection direction: 65 °, color: green, Pin layout: Linear pinning, Solder pin [P]: 3.5 mm, number of solder pins per potential: 1, type of packaging: packed in cardboard

PCB terminal block

PCB terminal block - FK-MPT 0,5/ 8-3,5-H - 1928822

<https://www.phoenixcontact.com/gb/products/1928822>



PCB terminal block, nominal current: 4 A, rated voltage (III/2): 250 V, nominal cross section: 0.5 mm², number of potentials: 8, number of rows: 1, number of positions per row: 8, product range: FK-MPT 0,5/...-H, pitch: 3.5 mm, connection method: Push-in spring connection, mounting: Wave soldering, conductor/PCB connection direction: 0 °, color: green, Pin layout: Linear pinning, Solder pin [P]: 4 mm, number of solder pins per potential: 1, type of packaging: packed in cardboard

Upper part of housing - BC 161,6 OT U22 KMGY



2278526

<https://www.phoenixcontact.com/gb/products/2278526>

PCB connector

PCB connector - FK-MPT 0,5/ 8-ST-3,5 - 1913989

<https://www.phoenixcontact.com/gb/products/1913989>



PCB connector, nominal cross section: 0.5 mm², color: green, nominal current: 4 A, rated voltage (III/2): 250 V, contact surface: Tin, type of contact: Female connector, number of potentials: 8, number of rows: 1, number of positions: 8, number of connections: 16, product range: FK-MPT 0,5/...-ST, pitch: 3.5 mm, connection method: Push-in spring connection, conductor/PCB connection direction: 0 °, plug-in system: COMBICON PST 1,0, locking: without, mounting: without, type of packaging: packed in cardboard

PCB terminal block

PCB terminal block - PTSA 0,5/11-2,5-Z - 1990096

<https://www.phoenixcontact.com/gb/products/1990096>



PCB terminal block, nominal current: 2 A, rated voltage (III/2): 250 V, nominal cross section: 0.5 mm², number of potentials: 11, number of rows: 1, number of positions per row: 11, product range: PTSA 0,5, pitch: 2.5 mm, connection method: Push-in spring connection, mounting: Wave soldering, conductor/PCB connection direction: 45 °, color: green, Pin layout: Zigzag pinning M, Solder pin [P]: 3.6 mm, number of solder pins per potential: 1, type of packaging: packed in cardboard. Offset soldering legs, two-rowed

Upper part of housing - BC 161,6 OT U22 KMGY

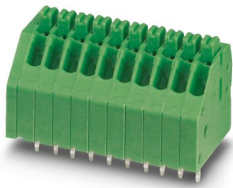
2278526

<https://www.phoenixcontact.com/gb/products/2278526>

PCB terminal block

PCB terminal block - PTSA 0,5/11-2,5-F - 1989832

<https://www.phoenixcontact.com/gb/products/1989832>



PCB terminal block, nominal current: 2 A, rated voltage (III/2): 250 V, nominal cross section: 0.5 mm², number of potentials: 11, number of rows: 1, number of positions per row: 11, product range: PTSA 0,5, pitch: 2.5 mm, connection method: Push-in spring connection, mounting: Wave soldering, conductor/PCB connection direction: 45 °, color: green, Pin layout: Linear pinning, Solder pin [P]: 3.6 mm, number of solder pins per potential: 1, type of packaging: packed in cardboard. Soldering legs in front area, one-rowed

PCB terminal block

PCB terminal block - PTS 1,5/ 6-5,0-H - 1792902

<https://www.phoenixcontact.com/gb/products/1792902>



PCB terminal block, nominal current: 16 A, rated voltage (III/2): 400 V, nominal cross section: 1.5 mm², number of potentials: 6, number of rows: 1, number of positions per row: 6, product range: PTS 1,5/..-H, pitch: 5 mm, connection method: Push-in spring connection, mounting: Wave soldering, conductor/PCB connection direction: 0 °, color: green, Pin layout: Linear pinning, Solder pin [P]: 2.5 mm, number of solder pins per potential: 1, type of packaging: packed in cardboard

Upper part of housing - BC 161,6 OT U22 KMGY

2278526

<https://www.phoenixcontact.com/gb/products/2278526>

PCB terminal block

PCB terminal block - PT 1,5/ 6-5,0-H - 1935200

<https://www.phoenixcontact.com/gb/products/1935200>



PCB terminal block, nominal current: 17.5 A, rated voltage (III/2): 400 V, nominal cross section: 1.5 mm², number of potentials: 6, number of rows: 1, number of positions per row: 6, product range: PT 1,5/...-H, pitch: 5 mm, connection method: Screw connection with wire protector, mounting: Wave soldering, conductor/PCB connection direction: 0 °, color: green, Pin layout: Linear pinning, Solder pin [P]: 3.5 mm, number of solder pins per potential: 1, type of packaging: packed in cardboard

PCB connector

PCB connector - PT 1,5/ 6-PH-5,0 - 1755622

<https://www.phoenixcontact.com/gb/products/1755622>



PCB connector, nominal cross section: 1.5 mm², color: green, nominal current: 10 A, rated voltage (III/2): 400 V, contact surface: Tin, type of contact: Female connector, number of potentials: 6, number of rows: 1, number of positions: 6, number of connections: 6, product range: PT 1,5/...-PH, pitch: 5 mm, connection method: Screw connection with tension sleeve, screw head form: H1L Philipps recess with slotted Torx, conductor/PCB connection direction: 0 °, plug-in system: COMBICON PST 1,3, locking: without, mounting: without, type of packaging: packed in cardboard

Upper part of housing - BC 161,6 OT U22 KMGY

2278526

<https://www.phoenixcontact.com/gb/products/2278526>

Pin strip

Pin strip - PST 1,3/ 6-5,0 - 1933228

<https://www.phoenixcontact.com/gb/products/1933228>



Pin strip, nominal cross section: 1.5 mm², color: black, nominal current: 12 A (depends on the plug used), rated voltage (III/2): 320 V, contact surface: Tin, type of contact: Male connector, number of potentials: 6, number of rows: 1, number of positions: 6, number of connections: 6, product range: PST 1,3/...-V, pitch: 5 mm, mounting: THR soldering, pin layout: Linear pinning, solder pin [P]: 3.5 mm, plug-in system: COMBICON PST 1,3, locking: without, mounting: without, type of packaging: packed in cardboard, The maximum current depends on the plug used. The lower of the two current values apply for plug and pin strip. The pin strip is made of highly temperature resistant plastic and is thus suitable for the reflow process.

PCB terminal block

PCB terminal block - MKKDS 1,5/ 2 - 1725012

<https://www.phoenixcontact.com/gb/products/1725012>



PCB terminal block, nominal current: 17.5 A, rated voltage (III/2): 400 V, nominal cross section: 1.5 mm², number of potentials: 4, number of rows: 2, number of positions per row: 2, product range: MKKDS 1,5, pitch: 5 mm, connection method: Screw connection with tension sleeve, screw head form: L Slotted, mounting: Wave soldering, conductor/PCB connection direction: 0 °, color: green, Pin layout: Linear pinning, Solder pin [P]: 3.5 mm, number of solder pins per potential: 1, type of packaging: packed in cardboard. The article can be aligned to create different nos. of positions!

Upper part of housing - BC 161,6 OT U22 KMGY

2278526

<https://www.phoenixcontact.com/gb/products/2278526>

PCB terminal block

PCB terminal block - MKKDSG 3/ 3 - 1721087

<https://www.phoenixcontact.com/gb/products/1721087>



PCB terminal block, nominal current: 17.5 A, rated voltage (III/2): 400 V, nominal cross section: 2.5 mm², number of potentials: 6, number of rows: 2, number of positions per row: 3, product range: MKKDSG 3, pitch: 5 mm, connection method: Screw connection with tension sleeve, screw head form: L Slotted, mounting: Wave soldering, conductor/PCB connection direction: 0 °, color: green, Pin layout: Linear pinning, Solder pin [P]: 5 mm, number of solder pins per potential: 1, type of packaging: packed in cardboard. The article can be aligned to create different nos. of positions!

PCB terminal block

PCB terminal block - ZFKKDS 1,5C-5,0 - 1889301

<https://www.phoenixcontact.com/gb/products/1889301>



PCB terminal block, nominal current: 16 A, rated voltage (III/2): 400 V, nominal cross section: 1.5 mm², number of potentials: 2, number of rows: 2, number of positions per row: 1, product range: ZFKKDS(A) 1,5C, pitch: 5 mm, connection method: Spring-cage connection, mounting: Wave soldering, conductor/PCB connection direction: 45 °, color: green, Pin layout: Linear pinning, Solder pin [P]: 3.7 mm, number of solder pins per potential: 1, type of packaging: packed in cardboard. Single module for the custom grouping of different numbers of positions. An end terminal block is also needed to terminate the block (see accessories). Blocked items with different numbers of positions are also available.

Upper part of housing - BC 161,6 OT U22 KMGY



2278526

<https://www.phoenixcontact.com/gb/products/2278526>

PCB connector

PCB connector - PTDA 1,5/ 8-PH-3,5 - 1725185

<https://www.phoenixcontact.com/gb/products/1725185>



PCB connector, nominal cross section: 1.5 mm², color: green, nominal current: 8 A, rated voltage (III/2): 240 V, contact surface: Tin, type of contact: Female connector, number of potentials: 8, number of rows: 1, number of positions: 8, number of connections: 16, product range: PTDA 1,5/...-PH, pitch: 3.5 mm, connection method: Push-in spring connection, conductor/PCB connection direction: 45 °, pin layout: Linear double pinning, plug-in system: COMBICON PST 1,0, locking: without, mounting: without, type of packaging: packed in cardboard

PCB connector

PCB connector - PTDA 2,5/ 6-PH-5,0 - 1725549

<https://www.phoenixcontact.com/gb/products/1725549>



PCB connector, nominal cross section: 2.5 mm², color: green, nominal current: 14 A, rated voltage (III/2): 400 V, contact surface: Tin, type of contact: Female connector, number of potentials: 6, number of rows: 1, number of positions: 6, number of connections: 12, product range: PTDA 2,5/...-PH, pitch: 5 mm, connection method: Push-in spring connection, conductor/PCB connection direction: 45 °, plug-in system: COMBICON PST 1,3, locking: without, mounting: without, type of packaging: packed in cardboard

Upper part of housing - BC 161,6 OT U22 KMGY



2278526

<https://www.phoenixcontact.com/gb/products/2278526>

Pin strip

Pin strip - PST 1,3/ 6-LV-5,0 - 1704521

<https://www.phoenixcontact.com/gb/products/1704521>

Pin strip, color: black, contact surface: Tin, number of positions: 6, product range: PST 1,3/..-LV, pitch: 5 mm, pin layout: Linear pinning, solder pin [P]: 3.5 mm, type of packaging: packed in cardboard, Specifically for PT 2,5/..-PVH



Housing cover

Housing cover - BC 107,6 DKL R KMGY - 2896173

<https://www.phoenixcontact.com/gb/products/2896173>

DIN rail housing for use in distribution boards in accordance with DIN 43880, Latching cover (non-detachable), width: 107.6 mm, height: 45 mm, depth: 8 mm, color: light grey (7035)



Upper part of housing - BC 161,6 OT U22 KMGY

2278526

<https://www.phoenixcontact.com/gb/products/2278526>

Housing cover

Housing cover - BC 107,6 DKL S TRANS - 2896131

<https://www.phoenixcontact.com/gb/products/2896131>



DIN rail housing for use in distribution boards in accordance with DIN 43880, transparent hinged cover, can be sealed, Including insertion plate, width: 107.6 mm, height: 45 mm, depth: 8 mm, color: transparent/light gray (7035)

PCB terminal block

PCB terminal block - SPTD 1,5/ 8-H-3,5 - 1841555

<https://www.phoenixcontact.com/gb/products/1841555>



PCB terminal block, nominal current: 10 A, rated voltage (III/2): 200 V, nominal cross section: 1.5 mm², number of potentials: 16, number of rows: 2, number of positions per row: 8, product range: SPTD 1,5, pitch: 3.5 mm, connection method: Push-in spring connection, mounting: Wave soldering, conductor/PCB connection direction: 0 °, color: green, Pin layout: Linear pinning, Solder pin [P]: 3.5 mm, number of solder pins per potential: 1, type of packaging: packed in cardboard

Upper part of housing - BC 161,6 OT U22 KMGY

2278526

<https://www.phoenixcontact.com/gb/products/2278526>

PCB terminal block

PCB terminal block - SPT-THR 1,5/12-V-3,5 P20 R72 - 1823298

<https://www.phoenixcontact.com/gb/products/1823298>



PCB terminal block, nominal current: 13.5 A, rated voltage (III/2): 160 V, nominal cross section: 1.5 mm², number of potentials: 12, number of rows: 1, number of positions per row: 12, product range: SPT 1,5/..-V-THR, pitch: 3.5 mm, connection method: Push-in spring connection, mounting: THR soldering, conductor/PCB connection direction: 90 °, color: black, Pin layout: Linear pinning, Solder pin [P]: 2 mm, number of solder pins per potential: 2, type of packaging: 72 mm wide tape

PCB terminal block

PCB terminal block - SPT-THR 1,5/ 9-V-5,0 P20 R88 - 1823489

<https://www.phoenixcontact.com/gb/products/1823489>



PCB terminal block, nominal current: 13.5 A, rated voltage (III/2): 320 V, nominal cross section: 1.5 mm², number of potentials: 9, number of rows: 1, number of positions per row: 9, product range: SPT 1,5/..-V-THR, pitch: 5 mm, connection method: Push-in spring connection, mounting: THR soldering, conductor/PCB connection direction: 90 °, color: black, Pin layout: Linear pinning, Solder pin [P]: 2 mm, number of solder pins per potential: 2, type of packaging: 88 mm wide tape

Upper part of housing - BC 161,6 OT U22 KMGY



2278526

<https://www.phoenixcontact.com/gb/products/2278526>

PCB terminal block

PCB terminal block - SPTA-THR 1,5/ 9-5,08 R72 - 1071209

<https://www.phoenixcontact.com/gb/products/1071209>



PCB terminal block, nominal current: 13.5 A, rated voltage (III/2): 320 V, nominal cross section: 1.5 mm², number of rows: 1, number of positions per row: 9, product range: SPTA 1,5/...-THR, pitch: 5.08 mm, connection method: Push-in spring connection, mounting: THR soldering, conductor/PCB connection direction: 45 °, color: black, Solder pin [P]: 2.6 mm, number of solder pins per potential: 1, type of packaging: 72 mm wide tape

RJ45 PCB connectors

RJ45 PCB connectors - CUC-SP-J1ST-S/R4LT-SMD - 1149611

<https://www.phoenixcontact.com/gb/products/1149611>



RJ45 PCB connectors, type: RJ45, degree of protection: IP20, 10 Gbps, connection method: SMD

Upper part of housing - BC 161,6 OT U22 KMGY

2278526

<https://www.phoenixcontact.com/gb/products/2278526>

RJ45 PCB connectors

RJ45 PCB connectors - CUC-SP-J1ST-A/R4LT-LED - 1149867

<https://www.phoenixcontact.com/gb/products/1149867>

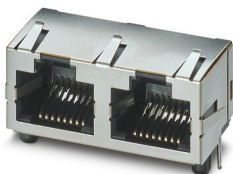


RJ45 PCB connectors, type: RJ45, degree of protection: IP20, 10 Gbps, connection method: Wave soldering contacts

RJ45 PCB connectors

RJ45 PCB connectors - CUC-MP-J1ST-A/2R4LT - 1149858

<https://www.phoenixcontact.com/gb/products/1149858>



RJ45 PCB connectors, degree of protection: IP20, 10 Gbps, connection method: Wave soldering contacts

Accessories

Upper part of housing - BC 161,6 OT U22 KMGY

2278526

<https://www.phoenixcontact.com/gb/products/2278526>



Filler plugs

Filler plugs - BC 53,6 BS U22 KMGY - 2896238

<https://www.phoenixcontact.com/gb/products/2896238>



DIN rail housing for use in distribution boards in accordance with DIN 43880, Filler plug for unoccupied terminal points (U22), width: 53.6 mm, height: 29.78 mm, depth: 22.35 mm, color: light grey (7035)

Phoenix Contact 2022 © - all rights reserved

<https://www.phoenixcontact.com>

PHOENIX CONTACT Ltd

Halesfield 13, Telford

Shropshire, TF7 4PG

01952 681700

info@phoenixcontact.co.uk