



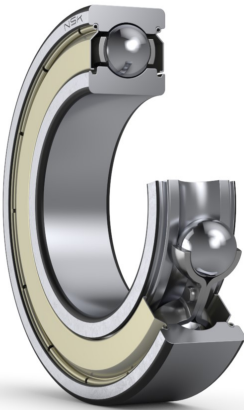
PRODUCT DATASHEET

Datasheet creation date: 2025/05/28 8:10 (UTC)



6013ZZ

Single-Row Deep Groove Ball Bearings



Boundary Dimensions

d	65	mm	Bore diameter
D	100	mm	Outside diameter
B	18	mm	Width
r (min.)	1.1	mm	Chamfer dimension

Basic Load Ratings

Cr	33500	N	Basic dynamic load rating
C0r	25200	N	Basic static load rating

Speeds

Grease	7500	min-1	Grease lubrication
--------	------	-------	--------------------

Abutment and Fillet Dimensions

da (min.)	71.5	mm	Diameter of shaft abutment
da (max.)	73	mm	Diameter of shaft abutment
Da (max.)	93.5	mm	Diameter of housing abutment
ra (max.)	1	mm	Radius of shaft or housing fillet

Calculation factors

fo	15.8		Factor
----	------	--	--------

Additional information

z	15		Number of Balls
Dw	10.319	mm	Ball Diameter

Mass

Mass approx.	0.439	kg	Mass approx.
--------------	-------	----	--------------

