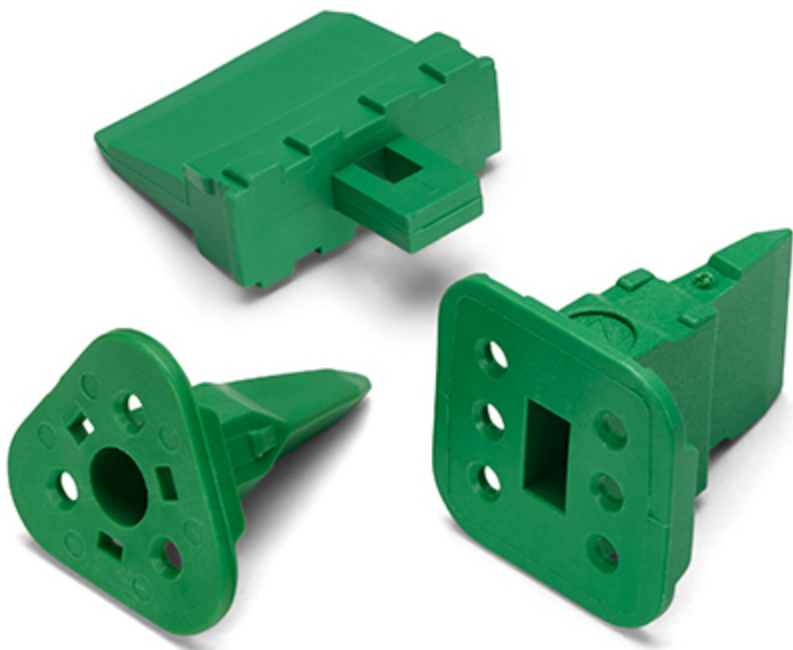


# DEUTSCH DT WEDGELOCKS



DEUTSCH | DEUTSCH DT  
[View on TE.com >](#)

Several DEUTSCH DT wedgelocks offer keying options, for additional design flexibility.



[Connectors](#) > [Automotive Connectors](#) > [Automotive Connector Accessories](#) > [Automotive Connector Locks & Position Assurance](#)

DEUTSCH DT wedgelocks help confirm proper contact alignment within each connector. They are assembled at the mating interface and press into place. Wedgelocks are required components for all DEUTSCH DT housings.



Operating Temperature Range: -55 - 125 °C  
[DEUTSCH DT Family Connector Overview & Assembly Instructions \(English\)](#)

Learn about our field proven DEUTSCH DT, DTM, and DTP connectors for harsh environment applications. Watch this video for an overview of the connectors and for step-by-step instructions on inserting and removing contacts, as well as mating and unmating.

## Additional DEUTSCH DT products

[VIEW ALL DEUTSCH DT PRODUCTS](#)

DEUTSCH DT connectors offer field proven reliability and rugged quality. The DT design strengths include optional flange mounting, multi-pin arrangements, and design flexibility.

### Features

#### Product Type Features

Connector & Contact Retention Accessory Type	Secondary Lock, TPA (Terminal Position Assurance)
Connector System	Wire-to-Board, Wire-to-Wire
Sealable	No



Connector & Contact Terminates To

Wire & Cable

Configuration Features

Number of Positions	2, 3, 4, 6, 8, 12
---------------------	-------------------

Body Features

Primary Product Color	Black, Blue, Brown, Gray, Green, Orange
Primary Product Material	PBT, PBT GF

Usage Conditions

Operating Temperature Range (°C)	-55 - 125
Operating Temperature Range (°F)	-67 - 257

Operation/Application

Circuit Application	Power & Signal
---------------------	----------------

Industry Standards

UL Flammability Rating	UL 94HB
------------------------	---------

Packaging Features

Packaging Quantity	1, 3500, 5000
Packaging Method	Box, Package

Other

Serviceable	Yes
-------------	-----

Reference Number

TE Internal Number	CAT-D487-W416
--------------------	---------------

SEE PRODUCTS ON NEXT PAGE



Products (1 of 5)



WEDGE LOCK, 4P, REC,  
BRN, DT, D



WEDGE LOCK, 4P, REC,  
GRN, DT, C



WEDGE LOCK, 2P, REC,  
BRN, DT, D



WEDGE LOCK, 4P, REC,  
BLK, DT, B

TE Part #	W4PD	W4PC	W2PD	W4PB
Connector & Contact Retention Accessory Type	Secondary Lock	Secondary Lock	Secondary Lock	Secondary Lock
Primary Product Color	Brown	Green	Brown	Black
Connector System	Wire-to-Wire	Wire-to-Wire	Wire-to-Wire	Wire-to-Wire
Primary Product Material	PBT	PBT	PBT	PBT
Number of Positions	4	4	2	4
Sealable	No	No	No	No
Connector & Contact Terminates To	Wire & Cable	Wire & Cable	Wire & Cable	Wire & Cable
Circuit Application	Power & Signal	Power & Signal	Power & Signal	Power & Signal
EU RoHS Directive 2011/65 /EU	EU RoHS Compliant	EU RoHS Compliant	EU RoHS Compliant	EU RoHS Compliant
EU ELV Directive 2000/53/EC	EU ELV Compliant	EU ELV Compliant	EU ELV Compliant	EU ELV Compliant
Product Families	DEUTSCH	DEUTSCH	DEUTSCH	DEUTSCH
Series	DEUTSCH DT	DEUTSCH DT	DEUTSCH DT	DEUTSCH DT

\*EU RoHS Directive 2011/65/EU

These products comply with the substance restrictions of the Restriction on Hazardous Substances Directive 2011/65/EU (RoHS2). The RoHS2 Directive requires that certain electrical and electronic equipment products do not contain mercury, cadmium, hexavalent chromium, PBB, PBDE, lead, DEHP, BBP, DBP and DIBP above defined thresholds. Products indicated as 'Compliant' do not contain any of these substances above the prohibition thresholds. Finished electrical and electronic equipment products will be CE marked as required by the Directive. Components may not be CE marked.

\*\*EU ELV Directive 2000/53/EC

These products comply with the substance restrictions of the End of Life Vehicles Directive 2000/53/EC (ELV). The ELV Directive requires that materials and components of vehicles do not contain mercury, cadmium, hexavalent chromium, and lead above defined thresholds. Products indicated as 'Compliant' do not contain any of these substances above the prohibition thresholds.



Products (2 of 5)



WEDGE LOCK, 4P, PLG,  
BLK, STD, DT, B



WEDGE LOCK, 4P, PLG,  
GRY, STD, DT, A



WEDGE LOCK, 4P, PLG,  
BRN, STD, DT, D



WEDGE LOCK, 4P, REC,  
GRY, DT, A

TE Part #	W4SB	W4SA	W4SD	W4PA
Connector & Contact Retention Accessory Type	Secondary Lock	Secondary Lock	Secondary Lock	Secondary Lock
Primary Product Color	Black	Gray	Brown	Gray
Connector System	Wire-to-Wire	Wire-to-Wire	Wire-to-Wire	Wire-to-Wire
Primary Product Material	PBT	PBT	PBT	PBT
Number of Positions	4	4	4	4
Sealable	No	No	No	No
Connector & Contact Terminates To	Wire & Cable	Wire & Cable	Wire & Cable	Wire & Cable
Circuit Application	Power & Signal	Power & Signal	Power & Signal	Power & Signal
EU RoHS Directive 2011/65 /EU	EU RoHS Compliant	EU RoHS Compliant	EU RoHS Compliant	EU RoHS Compliant
EU ELV Directive 2000/53/EC	EU ELV Compliant	EU ELV Compliant	EU ELV Compliant	EU ELV Compliant
Product Families	DEUTSCH	DEUTSCH	DEUTSCH	DEUTSCH
Series	DEUTSCH DT	DEUTSCH DT	DEUTSCH DT	DEUTSCH DT

**\*EU RoHS Directive 2011/65/EU**

These products comply with the substance restrictions of the Restriction on Hazardous Substances Directive 2011/65/EU (RoHS2). The RoHS2 Directive requires that certain electrical and electronic equipment products do not contain mercury, cadmium, hexavalent chromium, PBB, PBDE, lead, DEHP, BBP, DBP and DIBP above defined thresholds. Products indicated as 'Compliant' do not contain any of these substances above the prohibition thresholds. Finished electrical and electronic equipment products will be CE marked as required by the Directive. Components may not be CE marked.

**\*\*EU ELV Directive 2000/53/EC**

These products comply with the substance restrictions of the End of Life Vehicles Directive 2000/53/EC (ELV). The ELV Directive requires that materials and components of vehicles do not contain mercury, cadmium, hexavalent chromium, and lead above defined thresholds. Products indicated as 'Compliant' do not contain any of these substances above the prohibition thresholds.



Products (3 of 5)



WEDGE LOCK, 2P, PLG, GRN, STD, DT, C



WEDGE LOCK



WEDGE LOCK, 4P, PLG, GRY, SL RET, DT, A



WEDGE LOCK, 4P, PLG, GRN, STD, DT, C

TE Part #	W2SC	W6S2-P012	W4SA-P012	W4SC
Connector & Contact Retention Accessory Type	Secondary Lock	TPA (Terminal Position Assurance)	Secondary Lock	Secondary Lock
Primary Product Color	Green	Blue	Gray	Green
Connector System	Wire-to-Wire	Wire-to-Board, Wire-to-Wire	Wire-to-Wire	Wire-to-Wire
Primary Product Material	PBT	PBT GF	PBT	PBT
Number of Positions	2	6	4	4
Sealable	No		No	No
Connector & Contact Terminates To	Wire & Cable		Wire & Cable	Wire & Cable
Circuit Application	Power & Signal		Power & Signal	Power & Signal
EU RoHS Directive 2011/65 /EU	EU RoHS Compliant	EU RoHS Compliant	EU RoHS Compliant	EU RoHS Compliant
EU ELV Directive 2000/53/EC	EU ELV Compliant	EU ELV Compliant	EU ELV Compliant	EU ELV Compliant
Product Families	DEUTSCH	DEUTSCH	DEUTSCH	DEUTSCH
Series	DEUTSCH DT	DEUTSCH DT	DEUTSCH DT	DEUTSCH DT

\*EU RoHS Directive 2011/65/EU

These products comply with the substance restrictions of the Restriction on Hazardous Substances Directive 2011/65/EU (RoHS2). The RoHS2 Directive requires that certain electrical and electronic equipment products do not contain mercury, cadmium, hexavalent chromium, PBB, PBDE, lead, DEHP, BBP, DBP and DIBP above defined thresholds. Products indicated as 'Compliant' do not contain any of these substances above the prohibition thresholds. Finished electrical and electronic equipment products will be CE marked as required by the Directive. Components may not be CE marked.

\*\*EU ELV Directive 2000/53/EC

These products comply with the substance restrictions of the End of Life Vehicles Directive 2000/53/EC (ELV). The ELV Directive requires that materials and components of vehicles do not contain mercury, cadmium, hexavalent chromium, and lead above defined thresholds. Products indicated as 'Compliant' do not contain any of these substances above the prohibition thresholds.





Products (4 of 5)



WEDGE LOCK, 2P, PLG,  
BRN, STD, DT, D

WEDGE LOCK, 8P, PLG,  
ORG, STD, DT

WEDGE LOCK, 12P, PLG,  
ORG, STD, DT

WEDGE LOCK, 3P, REC,  
BLU, J1939, DT

TE Part #	W2SD	W8S	W12S	W3P-1939
Connector & Contact Retention Accessory Type	Secondary Lock	Secondary Lock	Secondary Lock	Secondary Lock
Primary Product Color	Brown	Orange	Orange	Blue
Connector System	Wire-to-Wire	Wire-to-Wire	Wire-to-Wire	Wire-to-Wire
Primary Product Material	PBT	PBT	PBT	PBT
Number of Positions	2	8	12	3
Sealable	No	No	No	No
Connector & Contact Terminates To	Wire & Cable	Wire & Cable	Wire & Cable	Wire & Cable
Circuit Application	Power & Signal	Power & Signal	Power & Signal	Power & Signal
EU RoHS Directive 2011/65 /EU	EU RoHS Compliant	EU RoHS Compliant	EU RoHS Compliant	EU RoHS Compliant
EU ELV Directive 2000/53/EC	EU ELV Compliant	EU ELV Compliant	EU ELV Compliant	EU ELV Compliant
Product Families	DEUTSCH	DEUTSCH	DEUTSCH	DEUTSCH
Series	DEUTSCH DT	DEUTSCH DT	DEUTSCH DT	DEUTSCH DT

**\*EU RoHS Directive 2011/65/EU**

These products comply with the substance restrictions of the Restriction on Hazardous Substances Directive 2011/65/EU (RoHS2). The RoHS2 Directive requires that certain electrical and electronic equipment products do not contain mercury, cadmium, hexavalent chromium, PBB, PBDE, lead, DEHP, BBP, DBP and DIBP above defined thresholds. Products indicated as 'Compliant' do not contain any of these substances above the prohibition thresholds. Finished electrical and electronic equipment products will be CE marked as required by the Directive. Components may not be CE marked.

**\*\*EU ELV Directive 2000/53/EC**

These products comply with the substance restrictions of the End of Life Vehicles Directive 2000/53/EC (ELV). The ELV Directive requires that materials and components of vehicles do not contain mercury, cadmium, hexavalent chromium, and lead above defined thresholds. Products indicated as 'Compliant' do not contain any of these substances above the prohibition thresholds.



Products (5 of 5)



WEDGE LOCK, 6P, PLG,  
ORG, STD, DT

WEDGE LOCK, 12P, REC,  
GRN, DT

WEDGE LOCK, 8P, REC,  
GRN, DT

WEDGE LOCK, 2P, REC,  
BLK, DT, B

TE Part #	W6S	W12P	W8P	W2PB
Connector & Contact Retention Accessory Type	Secondary Lock	Secondary Lock	Secondary Lock	Secondary Lock
Primary Product Color	Orange	Green	Green	Black
Connector System	Wire-to-Wire	Wire-to-Wire	Wire-to-Wire	Wire-to-Wire
Primary Product Material	PBT	PBT	PBT	PBT
Number of Positions	6	12	8	2
Sealable	No	No	No	No
Connector & Contact Terminates To	Wire & Cable	Wire & Cable	Wire & Cable	Wire & Cable
Circuit Application	Power & Signal	Power & Signal	Power & Signal	Power & Signal
EU RoHS Directive 2011/65 /EU	EU RoHS Compliant	EU RoHS Compliant	EU RoHS Compliant	EU RoHS Compliant
EU ELV Directive 2000/53/EC	EU ELV Compliant	EU ELV Compliant	EU ELV Compliant	EU ELV Compliant
Product Families	DEUTSCH	DEUTSCH	DEUTSCH	DEUTSCH
Series	DEUTSCH DT	DEUTSCH DT	DEUTSCH DT	DEUTSCH DT

**\*EU RoHS Directive 2011/65/EU**

These products comply with the substance restrictions of the Restriction on Hazardous Substances Directive 2011/65/EU (RoHS2). The RoHS2 Directive requires that certain electrical and electronic equipment products do not contain mercury, cadmium, hexavalent chromium, PBB, PBDE, lead, DEHP, BBP, DBP and DIBP above defined thresholds. Products indicated as 'Compliant' do not contain any of these substances above the prohibition thresholds. Finished electrical and electronic equipment products will be CE marked as required by the Directive. Components may not be CE marked.

**\*\*EU ELV Directive 2000/53/EC**

These products comply with the substance restrictions of the End of Life Vehicles Directive 2000/53/EC (ELV). The ELV Directive requires that materials and components of vehicles do not contain mercury, cadmium, hexavalent chromium, and lead above defined thresholds. Products indicated as 'Compliant' do not contain any of these substances above the prohibition thresholds.



Related Materials

Flipbook Catalog

Industrial & Commercial Transportation - Terminals and Connectors (English)

TE's Industrial & Commercial Transportation Terminals and Connectors flipbook catalog features AMPSEAL, AMPSEAL 16, Circular DIN, DEUTSCH, HDSCS, LEAVYSEAL, and Superseal 1.0 connectors, contacts, tools, and accessories.  
English

Product Specifications

DEUTSCH DT Connectors Product Specifications (English)

This specification covers performance tests and quality requirements for DEUTSCH DT connectors.  
English

Test Specifications

DEUTSCH DT Connectors Test Specifications (English)

This report summarizes the results of in-house qualification testing of DEUTSCH DT electrical connectors.  
English

Connector Selector

Connector Selector (English)

The Connector Selector is a reference guide to TE Connectivity's (TE) Industrial & Commercial Transportation electrical connectors.  
English

Also in the Series | DEUTSCH DT

Automotive Connector Caps & Covers (91)	Automotive Connector Locks & Position Assurance(73)	Automotive Housings(614)	Automotive Seals & Cavity Plugs(4)
Insertion & Extraction Tools(3)	Other Automotive Connector Accessories(14)	PCB Connector Headers & Receptacles (83)	

DEUTSCH, TE Connectivity, and TE connectivity (logo) are trademarks.