

WHEEL E 125X50/50 ROLLER BEAR. SWIVEL FORK M22

Wheel series E

Wheels with elastic solid rubber tyre bonded to die-cast aluminum centre.
Available with ball bearings or roller bearings.
Wheel fitted with standard roller bearing.
Steel Hub.

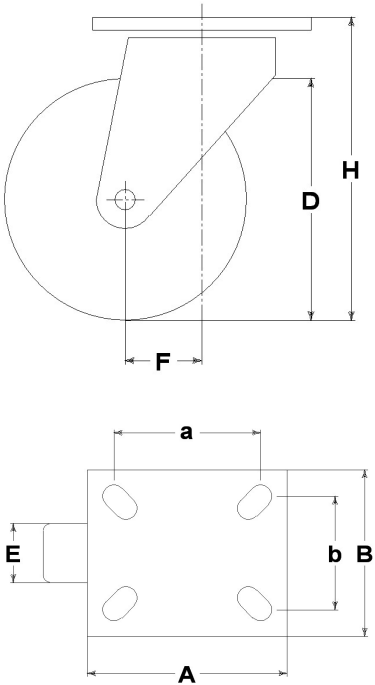
Castor series M22

M22 series, Medium-light pressed steel fork assemblies; swivel version has double ball raceways. Zincplated.



Technical data

| | | |
|----------------------------|-----|------------|
| Wheel diameter | D | 125 mm |
| Tyre width | E | 50,0 mm |
| Bore diameter | d | 20 mm |
| Weight article | | 2,040 kg |
| Hub width | L | 50 mm |
| Overall height | H | 159 mm |
| Top plate outer dimensions | AxB | 135x110 mm |
| Bolt hole spacing | axb | 96x56 mm |
| Bolt hole spacing | axb | 105x75 mm |
| Bolt hole spacing | axb | 105x80 mm |
| Fixing bolt diameter | g | M10 |
| Offset | F | 49 mm |
| Fork width | U | 50 mm |
| Load Capacity | | 200 kg |



Related Articles

- Spare part wheel: [2052](#)
Version with footguard: [16330PP](#)
Version with trailing brake: [16330FR](#)
Version with trailing brake and footguard: [16330FRPP](#)

GENERAL INFORMATION / RECOMMENDATIONS AND WARNINGS

The cited text and the complete catalogue in their most up-dated versions are available in the OEM's website page www.lagspa.it/downloads. The dimensions, descriptions, specifications and illustrations herein are indicative and subject to variations without notice. The fact that products are illustrated herein does not necessarily imply they are available from stock nor does it place us under any obligation to supply them. Tests carried out refer to the original products with original accessories: the replacement of one of the components with others of different manufacture might prevent the same results from being achieved and will automatically invalidate any guarantee. Please contact our technical service concerning any special application.