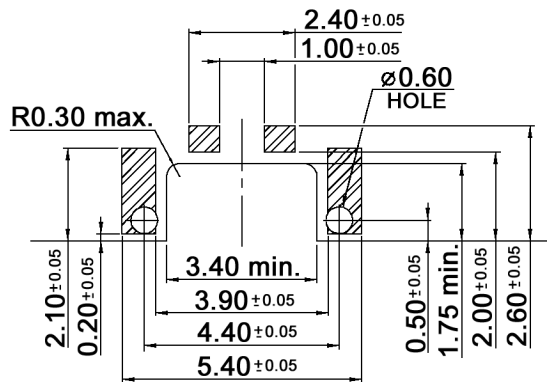
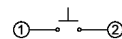


P.C.B. LAYOUT



CIRCUIT DIAGRAM



Compliance: RohS II (2011/65/EU)

Tolerances: ±0.2mm	Date	Name
	11/15	dr
Modifications	Date	Name

**TSS 3222 xP RA**

**knitter-switch**

**30 34 83**

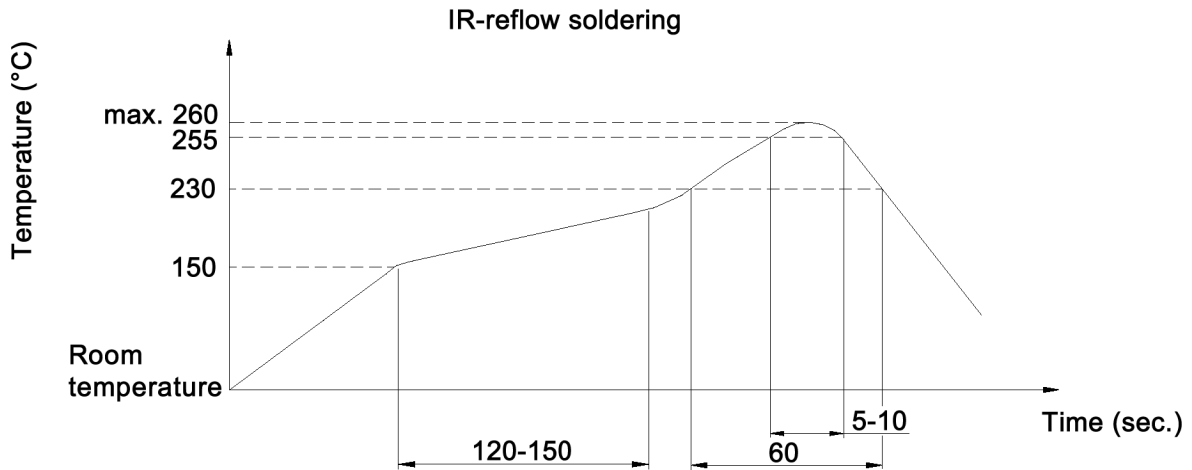
Page

1/2

**Specifications:**

**Contact rating:** 50mA, 12V DC  
**Contact resistance:** 500mOhm max.  
**Insulation resistance:** 100MOhm min. at 100V DC  
**Dielectric strength:** 100V AC (50/60Hz) for 1 minute  
**Operating temperature:** -30°C to +85°C  
**Storage temperature:** -40°C to +90°C  
**Mechanical life:** 600 000 cycles  
**Travel:** 0.15 +/-0.1mm  
**Material:** Contact: stainless steel, silver cladding  
 Stem: high-temp. thermoplastic LCP  
 Tape: kapton  
 Terminal: phosphor bronze, silver plated  
 Base: high-temp. thermoplastic PA9T, molded black  
 Cover: stainless steel, gold flash

**Soldering conditions:**



x	Operating force
N	160 +/-50gf
R	220 +/-50gf

Compliance: RohS II (2011/65/EU)

Tolerances: ±0.2mm	Date	Name	<b>TSS 3222 xP RA</b>
	11/15	dr	
			<b>knitter-switch</b>
			<b>30 34 83</b>
			Page
			2/2
Modifications	Date	Name	