



Datasheet

ENGLISH

40x Mag Min. Illuminated Microscope

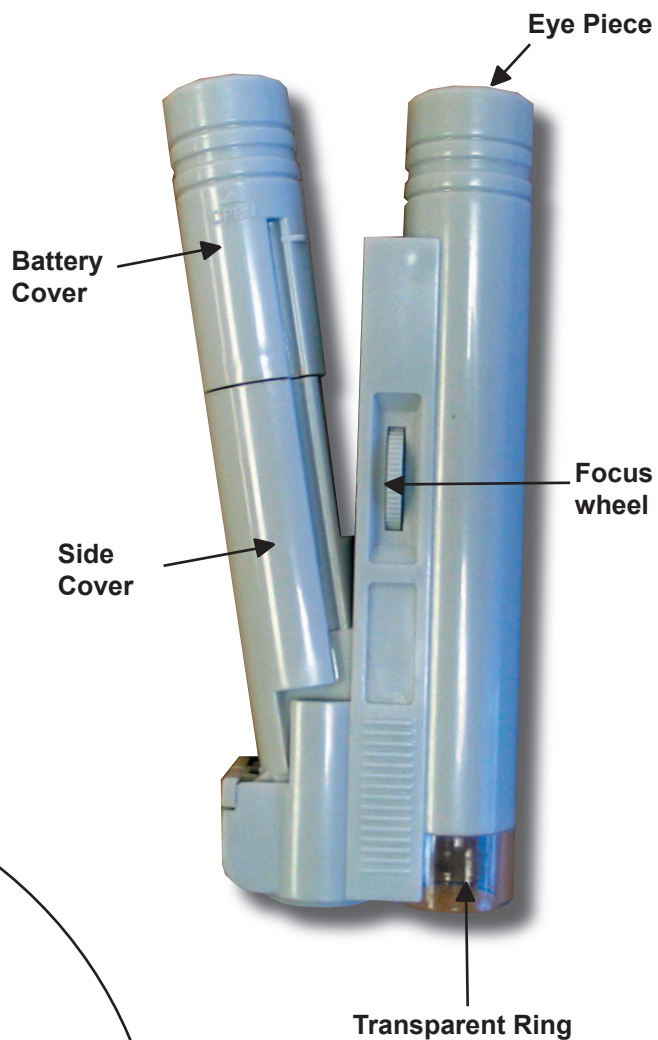
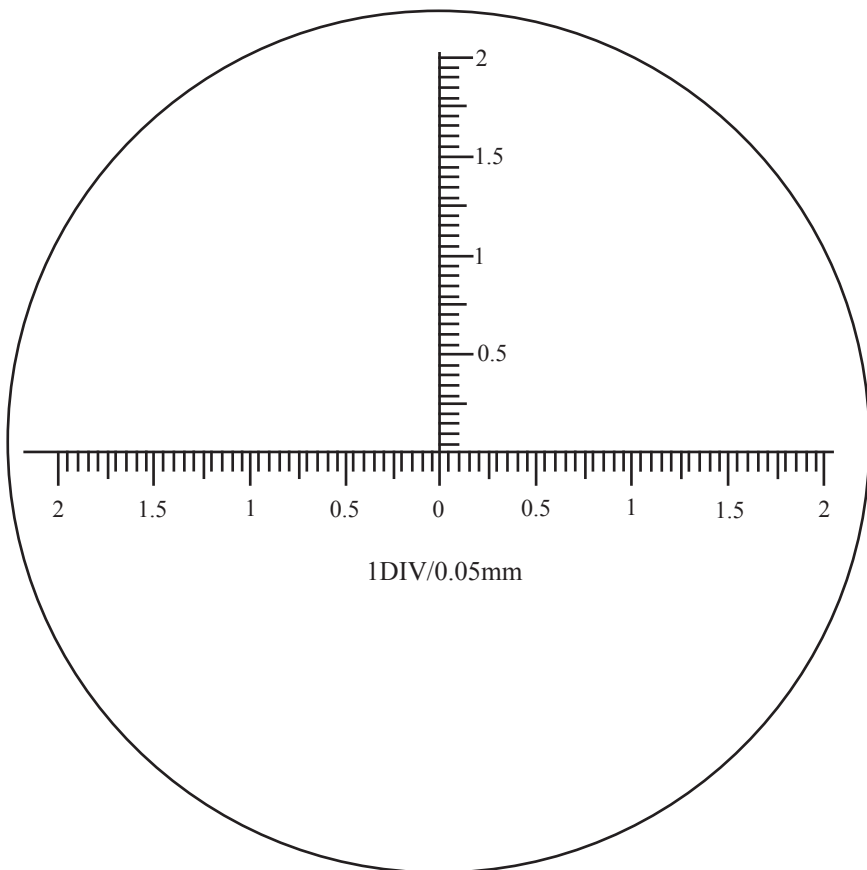
CODE: 59-675-040

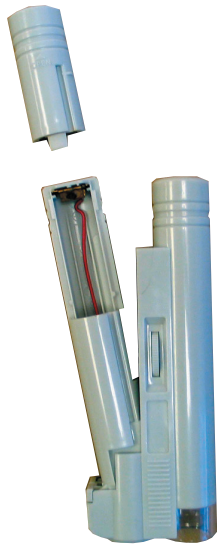
RS: 528-5290

Specification

- 40x Magnification
- Blue filtered illumination
- Adjustable focus
- Graduated Scale 4mm wide
- Power: 2x 1.5v AA batteries (not supplied)
- Lamp: 2.2v / 2.5A
- Colour: Black

Graduated Scale



**FIG. 1****FIG. 2****FIG. 3**

Operating Instructions

Fit 2x AA batteries (see FIG. 1).
Pull the 2 tubes apart for easier use.
Push battery cover upwards to remove.
Insert both batteries with positive connection facing bulb.
Replace battery cover.

Illumination is switched on with tubes pulled apart. (FIG. 2)
Illumination is switched off when tubes are pushed together (FIG.3)

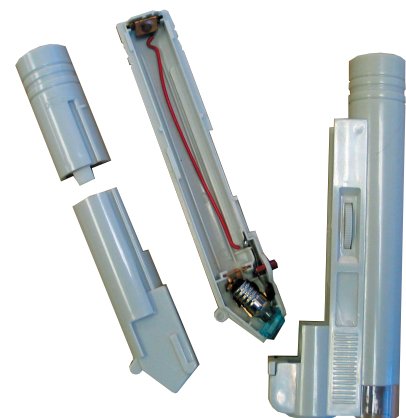
**FIG. 4**

Place transparent ring over part to be magnified.
Pull tubes apart to switch on illumination if required.
Look through Eye Piece.
Adjust focus wheel to make image clear.
Use Graduated Scale to measure desired part.
Push tubes together when not in use.

Fitting Replacement Bulb

CODE: 59-675-041
RS: 528-5313

1. Pull illumination tube from microscope body. FIG 4.
2. Remove battery cover and batteries. FIG 1.
3. Pull side cover away from body. FIG 5.
4. Pull out used bulb.
5. Replace new bulb.
6. Replace side cover.
7. Replace batteries and battery cover.
8. Locate side lugs of illumination tube into microscope body.
Push and snap into position.

**FIG. 5**